

**J. E. GOWING,**  
**GENTLEMEN'S OUTFITTER,**  
**346 GEORGE STREET, 346**  
**SYDNEY,**

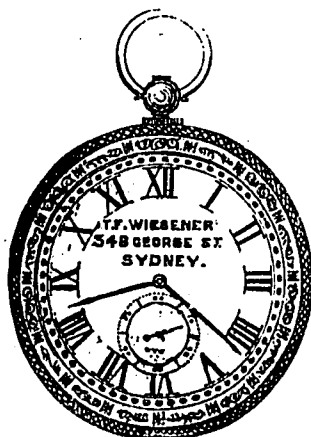
HALF WAY BETWEEN HUNTER STREET & POST OFFICE.

IMPORTER OF EVERY REQUISITE FOR GENTLEMEN'S WEAR.

ALL GOODS MARKED IN PLAIN FIGURES.

**T. F. WIESENER,**  
**348 GEORGE STREET, 348**

PLAIN  
 FIGURE  
 MARKING.



PLAIN  
 FIGURE  
 MARKING.

**Practical Jeweller and Watchmaker, &c.,**  
**IMPORTER OF**  
**FIRST-CLASS WATCHES, JEWELLERY, SILVER, ELECTRO-PLATE, OPTICAL & FANCY GOODS,**  
 Unsurpassed in **QUALITY, DESIGN** and **NOVELTY**, from the best makers in London, Paris,  
 and Geneva. A call at those central premises  
**348 GEORGE STREET, 348**  
 (Halfway between Hunter-street and Post Office), will be found very advantageous.  
**ALL WATCHES GUARANTEED. EVERY ARTICLE MARKED IN PLAIN FIGURES.**



## TABLE OF CONTENTS.

	PAGE
CITY STREET DIRECTORY	17
SUBURBAN DIRECTORY	166
ALPHABETICAL DIRECTORY	279
TRADE AND PROFESSIONAL DIRECTORY	506
COMMERCIAL DIRECTORY—BANKS, INSURANCE, MINING AND OTHER COMPANIES, AND TRADING ASSOCIATIONS	550
INSTITUTIONS DIRECTORY—ARTISTIC, BENEVOLENT, EDUCATIONAL AND SOCIAL	571
ECCLESIASTICAL, COLLEGIATE AND EDUCATIONAL DIRECTORY	585
MEDICAL DIRECTORY	591
LEGAL DIRECTORY	592
MUNICIPAL DIRECTORY	598
GOVERNMENT AND OFFICIAL DIRECTORY	601
MILITARY, NAVAL, AND VOLUNTEER DIRECTORY	613
INTERCOLONIAL DIRECTORY	618
LETTER AND NEWSPAPER RECEIVERS	624



# INDEX.

## CITY STREET DIRECTORY.

	PAGE		PAGE
Abattoir road, Pyrmont	17	Buckingham street, Little	37
Abercrombie lane	17	Burns street	38
Abercrombie place	17	Burton street	38
Abercrombie street, Little	18	Burrahmore street	39
Adelaide street	18		
Albert place, Crown street	18	Cambridge street	39
Albert street, Pyrmont	18	Campbell street	39
Albert street	18	Campbell street, Lower	41
Albion street	18	Campbell street, Little...	42
Albion place	19	Carlton street	42
Albion street, Little	20	Castlereagh street	42
Albion wharf	20	Castlereagh street, North	45
Alexander street	20	Castlereagh street, South	45
Alfred street	20	Challis street	45
Allen street, Pyrmont...	20	Chambers street, Ultimo	45
Ann street	20	Chapman lane	45
Ann street, Pyrmont...	20	Chapman street...	45
Arbitration street	21	Charles lane	46
Argyle place	21	Charlotte place	46
Argyle street	21	Chester street	46
Arthur street	21	Chippen street	46
Athlone place	22	Chowne street, Pyrmont	46
Athlone street	23	Church street, Pyrmont	47
		Circular quay	47
Bank street	23	Clarence lane	47
Barcom Glen terrace	24	Clarence street	47
Barcom street	24	Clarence street, South	49
Barcom street, Little	24	Cleveland street...	49
Barker lane	24	Clyde street	50
Barker street	24	College street	51
Barrack street	24	Collins street	51
Bathurst street	25	Cooper street	51
Bay street	26	Corben street	52
Beaufort street	26	Crescent street	52
Bedford street	26	Crown street	52
Bellevue street	26	Crown road	56
Belvoir street	27	Cumberland street	56
Bent street	27		
Best street	27	Dale street	58
Bettington street	27	Dalley lane	58
Blend street	28	Darlinghurst road	58
Bligh street	28	Davy street	59
Bloomfield street	28	Day street	59
Bloomfield street, Little	28	Denham street	60
Bond street	28	Denison street, Pyrmont	60
Botanic Gardens	28	Devonshire street	60
Botany street	28	Dick street	61
Bourke lane	29	Dixon street	61
Bourke street	29	Domain	62
Bourke street, Little	33	Domain terrace	62
Bowman street, Pyrmont	33	Dowling street	62
Bridge street	34	Dowling street, South	64
Brisbane street	35	Dowling street, Upper...	64
Brisbane street, Little	35	Druitt street	64
Brougham street	36	Duke street	65
Brougham street, Upper	36	Duncan street	66
Buckingham street	37	Dwyer street, Chippendale	66

## INDEX.

vii

	PAGE		PAGE
Earl street	66	Howard street	96
East street	66	Hunt street	96
Edgloy street	66	Hunter street	97
Edward lane	66	Hunter street, Little	98
Edward street, Pyrmont	66	Hutchinson street	98
Elizabeth bay road	67		
Elizabeth street...	67	James street	98
Elizabeth street, Little	71	Jamison street	98
Engine street	72	Jenkins street	98
Erskine street	71	John street, Pyrmont...	98
Essex street	72	Johnson street	99
Essex street, Little	72	Judge street	99
Exeter place	72	Junction lane	100
		Junction street	100
Ferry lane	69		
Fitzroy street	69	Kellett street	96
Fitzroy street, Chippendale	70	Kensington street	100
Fitzwilliam street	70	Kent street	100
Fleeton's cottages	70	Kersey street	104
Fleming's court...	70	King street	104
Factory street	72	Kippax street	106
Ferry lane	72		
Fitzroy street	72	Lime street	106
Forbes street	73	List lane...	106
Fort street, Lower	75	Liverpool street	107
Fort street, Upper	75		
Foster street	76	Macleay street	109
Foveaux street	76	Macquarie place	110
Fowler square	77	Macquarie street	110
Foxlow place	77	Macquarie street, Little	111
Francis street	77	Macquarie street, South	111
French street	77	Margaret lane	112
		Margaret place	112
George street	78	Margaret street...	113
George street, Little	86	Marian street, Pyrmont	113
George street, New	86	Markets	113
Gipps street	86	Market, Central Avenue	113
Gipps street, Little	87	Market C	113
Gipps street, West	88	Market D	113
Globe street	88	Market row	110
Gloucester street	88	Market street	114
Goold street	89	Marlborough street	115
Gordon street	89	Mary lane	115
Goulburn street...	89	Mary street	115
Grantham street	91	May street	115
Grantham lane	91	Merriman street...	115
Green Lane, Edward street	91	Mew street	116
Gresham street	91	Middle lane	116
Griffiths street	91	Middle street	116
		Miles street	116
Hamilton street...	91	Milk street	116
Harbour street	92	Mill street, Pyrmont	116
Harmer street	92	Miller road	117
Harnett street	92	Moore road	117
Harrington street	92	Mort's passage	117
Harris street, Pyrmont	93	Mount street, Pyrmont...	117
Harvey street	95	Munn street	118
Hay street	95	Macarthur street	118
Hay street, Little	95	McCredie street, Pyrmont	118
Henrietta street	96		
High Holborn street	96	Napoleon street...	119
Hill street, Little	96	Newtown road	119
Holt street	96	Nicholson street	119
Hosking place	96	Nichols street	119

	PAGE		PAGE
Norton street ... ..	119	Stanley street ... ..	145
Norton street, Little ... ..	119	Steam Mill street ... ..	146
Oatley lane ... ..	120	Steel street ... ..	147
Old Windmill hill ... ..	120	Stephen street ... ..	147
Orwell street ... ..	120	Surrey street ... ..	147
Outrim street ... ..	120	Surrey street, Little ... ..	147
Owen street ... ..	120	Susan lane ... ..	147
Oxford street ... ..	120	Sussex street ... ..	147
Oxford street, Little ... ..	122	Swan street ... ..	151
O'Connell street .. ...	122	St. Kilda lane ... ..	151
Palmer street ... ..	122	Taggart's lane ... ..	151
Paradise place ... ..	124	Terminus street... ..	151
Park road ... ..	124	Thomson street, Darlinghurst ... ..	146
Park street ... ..	125	Turner lane ... ..	151
Parker lane ... ..	125	Ultimo road ... ..	151
Parker street ... ..	125	Ultimo street ... ..	152
Parramatta street ... ..	125	Underwood street ... ..	152
Pawley street ... ..	127	Union street, Pyrmont ... ..	152
Pearce street ... ..	127	Union street ... ..	152
Pearl street ... ..	127	Upton street ... ..	152
Pelican street ... ..	127	Valentino lane ... ..	152
Phillip street ... ..	127	Victoria street ... ..	152
Pine street ... ..	128	Victoria terrace... ..	154
Pitt street ... ..	129	Washington street ... ..	154
Plunkett street ... ..	129	Waterloo place ... ..	155
Point street ... ..	135	Waterloo street... ..	155
Pottinger street... ..	135	Way terrace ... ..	159
Princes road ... ..	135	Wattle street ... ..	155
Princes street ... ..	135	Wellington place ... ..	155
Pyrmont street ... ..	137	Wellington street ... ..	156
Quarry street, Pyrmont ... ..	137	Wemyss street ... ..	156
Quay street, Ultimo ... ..	137	Wentworth lane ... ..	156
Quay street, Cowper wharf ... ..	137	Wentworth place ... ..	156
Queen's place ... ..	137	Wentworth street ... ..	156
Queen street ... ..	138	West street ... ..	156
Queen street, Little ... ..	138	West street, Little ... ..	156
Railway place ... ..	138	Wethered street... ..	156
Randle street ... ..	138	Wexford street ... ..	156
Regent street ... ..	139	Wharves ... ..	157
Reservoir lane ... ..	140	Wharf street ... ..	159
Riley place ... ..	140	William lane ... ..	159
Riley street ... ..	140	William street ... ..	159
Riley street, Little ... ..	143	William street, East ... ..	161
Robin Hood lane ... ..	143	William street, Upper, North ... ..	161
Rose lane ... ..	143	William street, Upper, South ... ..	161
Rose street ... ..	143	Wilshire street ... ..	161
Roslyn street ... ..	144	Wilson street ... ..	161
Rushcutter's bay road... ..	144	Wilton place ... ..	162
Ryder street ... ..	144	Wilton street ... ..	162
Samuel street ... ..	144	Windmill street... ..	162
Sarah Ann street ... ..	144	Woolloomooloo lane ... ..	162
Shelley street ... ..	144	Woolloomooloo street ... ..	162
Shepherd street... ..	144	Wright's Wharf ... ..	163
Sir John Young crescent ... ..	145	Wyde street ... ..	163
Smith street ... ..	145	Wynyard lane ... ..	163
Smithers lane ... ..	145	Wynyard square, East... ..	163
Smithers street ... ..	145	Wynyard street... ..	164
Sophia street ... ..	145	York street ... ..	164
Spring street ... ..	145	Yurong street ... ..	165



## SUBURBAN DIRECTORY.

	PAGE		PAGE
Alexandria ... ..	166	Macdonald Town ... ..	206
Ashfield ... ..	169	Newtown ... ..	213
Balmain ... ..	172	Paddington ... ..	222
Burwood ... ..	183	Petersham ... ..	231
Camperdown ... ..	185	Randwick ... ..	234
Darlington ... ..	189	Redfern ... ..	236
Five Dock ... ..	192	Ryde ... ..	249
Glebe ... ..	194	St. Leonards ... ..	251
Hunter's Hill ... ..	203	St. Leonards, East ... ..	252
Leichhardt ... ..	205	St. Peter's ... ..	255
Manly ... ..	208	Victoria ... ..	258
Marrickville ... ..	209	Waterloo... ..	261
		Waverley ... ..	268
		Woollahra ... ..	271

## TRADE AND PROFESSIONAL DIRECTORY.

	PAGE		PAGE
Accountants ... ..	506	Bonnet Box Maker (Miscellaneous) ..	558
Account Book Manufacturers ... ..	506	Bookbinders ... ..	512
Agents ... ..	506	Booksellers and Stationers ... ..	512
Architects, Surveyors, &c. ... ..	508	Bootmakers and Sellers ... ..	513
Artists ... ..	508	Brassfounders ... ..	514
Assayers... ..	508	Brewers ... ..	514
Attorneys and Conveyancers... ..	508	Brick Makers ... ..	514
Auctioneers ... ..	509	Brokers ... ..	514
Average Stater ... ..	509	Brush Makers ... ..	515
Bakers ... ..	509	Builders, including Carpenters ... ..	515
Ballastmen, Stevedores, &c. ... ..	510	Building Materials, Importers of ... ..	515
Barristers ... ..	510	Butchers .. ...	517
Barrow and Ladder Makers ... ..	510	Cab Proprietors... ..	519
Basket Makers ... ..	510	Cabinetmakers and Upholsterers ... ..	521
Baths ... ..	510	Candle and Soap Manufacturers ... ..	521
Bedding Manufacturers ... ..	510	Carpet Warehouses ... ..	521
Bedstead (Iron) Manufacturers ... ..	510	Carvers, Gilders, and Picture Frame Makers ... ..	521
Bellhangers and Locksmiths ... ..	510	Chair Caners and Makers ... ..	521
Berlin Wool Warehouses ... ..	510	Chemists and Druggists ... ..	522
Bird Sellers ... ..	510	Chimney Cleaners ... ..	522
Biscuit Manufacturers... ..	510	China and Glass Warehouses... ..	522
Blackening Manufacturers ... ..	510	Chiropodists ... ..	522
Blacksmiths ... ..	511	Churnmakers ... ..	522
Blind Manufacturers ... ..	511	Civil Engineers... ..	522
Block, Mast, and Oar Makers ... ..	511	Cigar Manufacturers ... ..	522
Board and Lodging Houses ... ..	511	Cloth and Tweed Manufacturers ... ..	522
Boatbuilders ... ..	512	Clothiers and Outfitters ... ..	523
Boiler Makers ... ..	512	Clothing Manufacturers ... ..	523
Boiling Down Establishments ... ..	512	Coachbuilders ... ..	523
Bonded Stores ... ..	512	Coal and Fuel Dealers... ..	523
Bone Mills ... ..	512		

	PAGE		PAGE
Coffee Roasters and Spice Grinders ...	524	Leather and Grindory Merchants ...	547
Collectors ...	524	Leather Japanners ...	547
Colour Manufacturers ...	524	Lime Merchants ...	547
Comb and Brush Makers ...	524	Lithographers ...	547
Confectioners and Pastry Cooks ...	524	Livery Stables ...	547
Coopers ...	524	Locksmiths ...	547
Cordial & Aerated Water Makers, &c. ...	524	Lodging Houses ...	547
Curriers ...	524		
Cutlers & Surgical Instrument Makers ...	524	Machinists and Agricultural Imple-	
		ment Makers ...	547
Dairies ...	525	Machine Rulers ...	547
Dealers ...	525	Marine Surveyors ...	547
Dentists ...	526	Mangle Manufacturer ...	547
Drapers and Haberdashers ...	526	Market Gardeners ...	547
Dray and Van Proprietors ...	527	Masons, Marble and Monumental ...	548
Dressmakers ...	529	Mast Makers ...	548
Dyers and Scourers ...	529	Mathematical Instrument Makers ...	548
		Meat Preservers ...	548
Earth Closet Depot (Miscellaneous) ...	558	Midwives ...	548
Electro-platers ...	530	Mill Belt Manufacturers ...	558
Embroidery Stampers ...	530	Millers ...	548
Engineers, Boilermakers, Ironfounders ...	530	Milliners ...	548
Engravers and Die Sinkers ...	530	Modellers and Sculptors ...	548
		Music and Musical Instrument sellers ...	548
Fancy Bazaars and Toy Warehouses ...	530		
Farriers ...	530	Naturalists ...	548
Feather and Glove Cleaners ...	530	News and Advertising Agents ...	548
Filter Manufacturer ...	558	Newspaper and Periodical Proprietors ...	548
Fireworks Makers (miscellaneous) ...	558	Nightmen ...	549
Fishmongers and Oyster Dealers ...	531	Notaries ...	549
Flour Merchants and Millers ...	531	Nurserymen, Seedsmen, and Florists ...	549
Fruiters and Greengrocers ...	531		
Fur Dealer ...	532	Oar and Scull Makers ...	549
Furniture Brokers and Dealers ...	532	Oil and Colourmen ...	549
		Oiled Clothing Manufacturers ...	549
Galvanized Iron and Zinc Workers ...	533	Omnibus Proprietors ...	549
Gasfitters and Plumbers ...	533	Opticians ...	549
Gaugers ...	533	Organ Builders ...	549
Glass Stainers ...	533	Outfitters ...	549
Grocers ...	533		
Grocers, Wholesale ...	537	Painters, &c. ...	549
Gunsmiths ...	537	Pastrycooks ...	550
		Pawnbrokers ...	550
Hairdressers ...	537	Perambulator Manufacturers ...	550
Hatters and Cap Makers ...	537	Photographer ...	550
Hay and Corn Dealers ...	538	Photographic Materials, Importers of ...	550
Herbalists ...	538	Physicians and Surgeons ...	550
Homoeopathic Druggists ...	538	Pianoforte Tuners ...	550
Horse Dealers and Livery Stable		Piano Warehouses ...	550
Keepers ...	538	Plane Maker ...	550
Hosiery and Glovers ...	538	Plasterers ...	550
Hotels ...	538	Plumbers ...	551
		Pomade Manufacturer (Miscellaneous) ...	558
Ice Manufacturers ...	544	Portmanteau Maker ...	551
Importers and Merchants ...	545	Potters ...	551
Ink and Vinegar Manufacturers ...	545	Poulterers ...	551
Ironfounders ...	545	Printers, Lithographers, and Publishers ...	551
Ironmongers ...	546	Produce Merchants ...	551
Ironmongers, Wholesale ...	546	Professors of Classics and Languages ...	551
		Professors of Dancing ...	551
Jewellers and Watchmakers ...	546	Professors of Drawing ...	551
Joiners ...	547	Professors of Music and Singing ...	551
		Professors of Navigation ...	551
Labour and Registry Offices ...	547	Professors of Writing ...	551
Law Stationers ...	547		

	PAGE		PAGE
Provision Merchants ...	552	Tailors ...	555
Publishers ...	552	Tanners ...	555
		Taxidermists ...	555
Rag Store (Miscellaneous) ...	558	Teachers ...	555
Restaurants ...	552	Tent Makers ...	555
Registry Offices ...	552	Ticket Writers ...	555
Rope and Line Makers ...	552	Timber Merchants ...	555
Saddlers and Harness Makers ...	552	Tinsmiths ...	555
Saddlers, Wholesale ...	552	Tin Smelters ...	556
Sail, Tarpaulin, and Tent Makers ...	552	Tobacco and Snuff Manufacturers ...	556
Salt Merchants ...	552	Tobacconists ...	556
Saw and Moulding Mills ...	552	Turners—Wood and Ivory ...	556
Scalemakers ...	553	Type Founders ...	557
Schools, Private ...	553		
Schools, Public ...	553	Umbrella and Parasol Makers ...	557
Scourers ...	553	Undertakers ...	557
Seedsmen ...	553	Upholsterers ...	557
Sewing Machine Importers & Agents ...	553		
Shinglers and Slaters ...	553	Van Proprietors ...	557
Shipbuilders ...	553	Veterinary Surgeons ...	557
Shipchandlers ...	553		
Shipowners ...	553	Warehousemen ...	557
Shipsmiths ...	554	Watchmakers ...	557
Shirt and Underclothing Makers ...	554	Wheelwrights ...	557
Sign Writers ...	554	Whitesmiths ...	557
Soap and Candlemakers ...	554	Whip Makers ...	557
Stationers, Wholesale ...	554	Wine and Spirit Merchants ...	558
Stationers ...	554	Wine Merchants—Australian ...	558
Stay and Corset Maker ...	554	Wireworkers ...	558
Steamboat Proprietors ...	554	Woolbrokers ...	558
Stove Manufacturers and Fitters ...	554	Woolpressors ...	558
Straw Hat and Bonnet Makers ...	554	Woolwashers ...	558
Sugar Refiners ...	554		

## GENERAL INDEX.

	PAGE		PAGE
Adelaide, Marine and Fire Insurance		Australian Gas Light Company ...	567
Company ...	560	Australian Assurance Company ...	561
Agent-General in England ...	603	Australian Jockey Club ...	571
Agricultural Society of N. S. Wales ...	578	Australian Joint Stock Bank ...	559
Albert Cricket Ground Company ...	567	Australian Museum ...	578
Alexandria Municipal Council ...	598	Australian Mutual Fire Insurance	
Alliance British and Foreign Life and		Society ...	561
Fire Insurance Co., of London ...	560	Australian Mutual Provident Society ...	561
Anvil Creek Colliery Company ...	564	Australian Union Benefit Society ...	578
Artists and Amateurs Life Academy ...	578	Austrian, Lloyd's Steam Navigation	
Ashfield Municipal Council ...	598	Company ...	564
Attorney-General's Department ...	612	Auxiliary Bible Society ...	578
Attorneys ...	593	Auxiliary to London Missionary	
Auditor-General ...	603	Society ...	570
Australasian Steam Navigation Co. ...	563		
Australian Agricultural Company ...	564	Balmmain Municipal Council ...	596
Australian Alliance Assurance Co. ...	561	Balmmain Steam Ferry Company ...	564
Australian Club ...	571	Bank of Australasia ...	559

	PAGE		PAGE
Bank of New South Wales ... ..	559	Cornwall Fire and Marine Insurance Co. ... ..	561
Bank of New Zealand... ..	559	Crown Meat Preserving Company ... ..	568
Baptist Church ... ..	589	Crown Prosecutors ... ..	612
Barristers ... ..	593	Crown Solicitor's Department... ..	612
Barristers' Admission Board ... ..	593	Customs ... ..	606
Batavia Sea and Fire Insurance Company ... ..	561	Darlinghurst Gaol ... ..	603
Baths ... ..	510	Darlington Municipal Council ... ..	599
Benevolent Society ... ..	579	Deaf, Dumb, and Blind Institution ... ..	580
Bonded Stores ... ..	512	Derwent and Tamar Assurance Co. ... ..	561
Botanical Gardens ... ..	608	Distilleries and Refineries ... ..	606
Bowenfels Coal Mining and Copper Smelting Company, Bowenfels ... ..	564	District Commissioners of Lands ... ..	610
British and Foreign Marine Assurance Company ... ..	561	District Court and Quarter Sessions... ..	592
Building Societies ... ..	569	District Court Judges ... ..	599
Bulli Coal Mining Company ... ..	564	District Court Sittings... ..	596
Burwood Municipal Council ... ..	599	Divorce and Matrimonial Causes Court	592
		Druids, Order of N.S.W. ... ..	567
Camden College School ... ..	586	Eastern and Australian Mail Steam Company ... ..	564
Camperdown Municipal Council ... ..	599	Ecclesiastical Directory ... ..	585
Canton Insurance Company ... ..	561	Educational Directory... ..	585
Cattle and Sheep Inspectors ... ..	608	Electric Telegraph Office ... ..	610
Cemeteries ... ..	604	Emigration Office ... ..	607
Central Police Court ... ..	604	English and Australian Copper Co. ... ..	568
Chamber of Commerce ... ..	568	English, Scottish and Australian Chartered Bank ... ..	560
China and Japan Marine Insurance Company ... ..	561	Equitable Permanent Benefit Building Land and Savings' Institution ... ..	569
Church of England ... ..	587	Executive Council ... ..	601
Church of England Schools ... ..	587	Fiji ... ..	618
Church Society... ..	579	Fiji Banking and Commercial Co. ... ..	560
City and Suburban Building Society... ..	569	Fitzroy Dock ... ..	611
City Bank ... ..	559	Fire Establishments ... ..	577
City Night Refuge and Soup Kitchen... ..	579	Five Dock Municipal Council... ..	599
City Volunteer Fire Company, No. 2	578	Foresters, Ancient Order of ... ..	575
Civil Departments ... ..	503	Free Public Library ... ..	605
Civil Service Building Society ... ..	569	German Glee Club, Concordia ... ..	579
Civil Service Co-operative Society ... ..	568	Germanic, Lloyd's ... ..	561
Clarence and New England Steam Navigation Company ... ..	564	Glebe Municipal Council ... ..	599
Clarence and Richmond Rivers Steam Navigation Company ... ..	564	Gold Mining Companies ... ..	565
Clubs ... ..	571	Good Templers, Independent Order of N. S. W. ... ..	576
Coal Companies... ..	564	Government and Official Directory ... ..	601
Collegiate Directory ... ..	585	Government Printing Office ... ..	606
Colonial Architect ... ..	611	Grammar School ... ..	586
Colonial Mutual Life Assurance Co. ... ..	561	Harbour Department ... ..	607
Colonial Secretary ... ..	603	Harbours and Rivers Department ... ..	611
Colonial Plate Glass Insurance Company... ..	561	Health Officer ... ..	607
Colonial Sugar Refining Company ... ..	568	Hebrew School ... ..	587
Colonial Treasurer ... ..	606	Home and Colonial Marine Insurance Company ... ..	561
Commercial Banking Company of Sydney ... ..	560	Home Visiting and Relief Society ... ..	579
Commercial Union Assurance Company... ..	561	Horticultural Society of N. S. W. ... ..	570
Commissioner of Affidavits ... ..	595	Hospitals for the Insane ... ..	603
Commissioners of Crown Lands ... ..	608	House of the Good Shepherd ... ..	580
Comptroller-General of Prisons ... ..	603	Hunter River New Steam Navigation Company ... ..	564
Co-operative Colliery ... ..	564	Hunter's Hill Municipal Council ... ..	599
Copper Mining Companies ... ..	565	Hyde Park Improvement Committee	580
Council of Education ... ..	586		
Congregational Church ... ..	589		
Consuls ... ..	605		

	PAGE		PAGE
Illawarra Steam Navigation Company	564	Mines, Department of .. ..	611
Immigration Department ... ..	607	Mining Companies—	
Imperial Fire Insurance Company of London ... ..	561	Coal ... ..	564
Imperial Marine Insurance Company, Liverpool ... ..	561	Copper ... ..	565
Industrial and Provident Permanent Benefit, Building, Land, and Investment Society ... ..	509	Gold ... ..	565, 566
Industrial Benefit Building Society ... ..	570	Tin ... ..	567
Industrial School, Biloela ... ..	604	Miscellaneous Companies ... ..	567
Insolvency Department ... ..	592	Money Order Office ... ..	610
Inspector General of Police ... ..	604	Municipal Directory ... ..	598
Inspector of Public Charities ... ..	603	Mutual Benefit Building Society, No. 1	569
Institutions' Directory... ..	571	Mutual Benefit Building Society, No. 2	569
Insurance Companies ... ..	560	Mutual Life Association of Australasia	562
Intercolonial Directory ... ..	560		
		National Fire and Marine Insurance Company of New Zealand ... ..	562
Java Sea and Fire Insurance Co. ... ..	561	National Marine Insurance Company of South Australia ... ..	562
Jewish Ladies Dorcas Society ... ..	580	Nautical School Ship Vernon ... ..	604
Jewish Philanthropic Society ... ..	580	Naval Directory ... ..	613
Jewish Synagogues ... ..	590	Necropolis ... ..	604
Justice and Public Instruction, Department of ... ..	612	Netherlands-India Fire and Marine Insurance Company of Batavia	562
Lands Department ... ..	607	Netherlands-India Sea and Fire Insurance Company of Batavia ... ..	562
Law Institute ... ..	593	New Caledonia ... ..	618
Legal Directory .. ..	592	New Hebrew Mutual Benefit Society	580
Legislative Assembly ... ..	602	New Lambton Colliery ... ..	564
Legislative Assembly, Officers of	603	New South Wales Marine Assurance Company .. ..	562
Legislative Council ... ..	601	New Wallsend Coal Company ... ..	565
Legislative Council, Officers of	603	New Zealand ... ..	618
Leichhardt Municipal Council ... ..	599	New Zealand Fire and Marine Insurance Company... ..	562
Letter and Newspaper Receivers	624	Newcastle Minmi Colliery ... ..	565
Lisgar Servants' Training School ... ..	580	Newcastle Wallsend Coal Company... ..	565
Liverpool and London and Globe Insurance Company ... ..	561	New South Wales Distillery Co. ... ..	568
London Alliance Fire and Life Assurance Company ... ..	562	New South Wales Shale and Oil Co ... ..	568
London and Lancashire Fire and Life Insurance Companies ... ..	562	New South Wales Temperance Alliance Society ... ..	577
London Chartered Bank of Australia	560	Newtown and Camperdown Fire Co. ... ..	578
London Loan and Discount Society ... ..	568	Newtown Municipal Council ... ..	599
Lunatic Hospitals ... ..	603	Norfolk Island .. ..	619
Lunatic Reception House ... ..	604	North Bulli Coal and Iron Company... ..	565
Macdonald Town Municipal Council	599	North China Insurance Company ... ..	562
Magistrates ... ..	596	North Shore Steam Ferry Company... ..	564
Manning River Steam Navigation Company ... ..	564	Northern Life Assurance Company ... ..	562
Marine Board ... ..	607	Norwich Union Fire Insurance Company ... ..	562
Marriekville Municipal Council ... ..	599	Notaries Public... ..	595
Masonic Information ... ..	572		
Master in Equity's Department ... ..	592	Observatory ... ..	605
Medical Directory ... ..	591	Occupation of Lands Office ... ..	610
Melbourne Steamship Company ... ..	564	Odd Fellows, G. U. O... ..	574
Mercantile Bank of Sydney ... ..	560	Odd Fellows, M. U. ... ..	574
Mercantile Loan Company ... ..	568	Omnibus Companies ... ..	567
Mercantile Marine Insurance Company of South Australia ... ..	562	Ordnance and Barrack Department ... ..	607
Mercantile Rowing Club ... ..	580	Oriental Bank Corporation ... ..	560
Merchant's Marine Insurance Co. ... ..	562	Orphan Schools ... ..	605
Metcalfe's Marine Assurance Co. ... ..	562	Osborne, Wallsend, and Illawarra Coal Companies ... ..	565
Metropolitan Transit Commissioners	598		
Military Directory ... ..	613	Pacific Fire and Marine Insurance Company ... ..	562
Military Stores ... ..	617	Paddington Municipal Council ... ..	599

	PAGE		PAGE
Parliament of N.S.W....	601	Savings' Bank, Government ...	610
Parliamentary Library...	603	School of Arts, Sydney ...	583
Parramatta and Hunter's Hill Steam Ferry Company ...	564	Scottish Australian Investment Co....	568
Peninsular and Oriental Steam Navigation Company ...	564	Scottish Australian Mining Company	565
Permanent Mutual Benefit Building and Investment Society ...	569	Scottish Commercial Fire and Life Insurance Company ...	563
Perpetual Building and Investment Society ...	570	Second Industrial Benefit Building Society ...	573
Petersham Municipal Council ...	600	Sheriffs Department ...	592
Physicians ...	591	Shipping Office ...	607
Post Office ...	610	Society for Relief of Destitute Children	581
Post Office Savings' Bank ...	560	Society for the Prevention of Cruelty to Animals ...	581
Presbyterian Church ...	588	Sons of Temperance ...	577
Presbyterian Schools ...	587	South Australia...	620
Primitive Methodist Connection ...	589	Southern Insurance Company ...	563
Prince Alfred Hospital...	583	Standard Life Assurance Company ...	563
Prince Alfred Yacht Club ...	581	Starr Bowkett Building Society, No. 1	570
Printing Office, Government ...	606	Starr Bowkett Building Society, No. 2	570
Provisional Schools ...	587	Starr Bowkett Building Society, No. 3	570
Public Charities, Inspector of ...	603	Steam Navigation Companies...	563
Public Schools ...	587	Superannuation Fund, Commissioners of ...	605
Public Works Department ...	611	Supreme Court ...	595
Pymont Bridge Company ...	568	Surveyor-General's Office ...	608
Quarantine Station ...	607	Swiss Lloyd's Marine Insurance Co. ...	563
Queen Fire and Life Insurance Company ...	562	Sydney Bethel Union ...	582
Quarter Sessions ...	596	Sydney City Mission ...	582
Queensland ...	562	Sydney Diocesan Book Society ...	582
Ragged Schools . . .	583	Sydney Exchange Company ...	568
Railway Department ...	611	Sydney Female Refuge ...	582
Randwick Municipal Council...	600	Sydney Fire Brigade ...	577
Redfern Municipal Council ...	600	Sydney Foundling Hospital ...	582
Redhead Coal Company ...	565	Sydney Grammar School ...	586
Reform Club ...	571	Sydney Hunt Club ...	571
Reformatory for Females ...	604	Sydney Infirmary and Dispensary ...	582
Registrar-General ...	604	Sydney Insurance Company ...	563
Religious Tract and Book Society ...	580	Sydney Marine Assurance Company...	563
Roman Catholic Schools ...	587	Sydney Marine Benefit Society ...	568
Roman Catholic Church ...	585	Sydney Meat Preserving Company ...	568
Royal Alfred Volunteer Fire Co. No. 1	577	Sydney Municipal Council ...	598
Royal Fire and Life Insurance Company of Liverpool and London ...	563	Sydney Rowing Club ...	583
Royal Foresters...	575	Sydney Servants' Home ...	583
Royal Mint ...	603	Sydney United Omnibus Company ...	567
Royal Society of New South Wales ...	581	Sydney Volunteer Fire Company, No. 2	577
Royal Sydney Yacht Squadron	581	Tasmania ...	621
Ryde Municipal Council ...	600	Tasmanian Steam Navigation Co. ...	564
St. Andrew's Benevolent Society ...	581	Tattersall's Club ...	571
St. Andrew's College ...	586	Temperance Societies ...	577
St. John's College ...	585	The New Zealand Loan and Mercantile Agency Co. ...	569
St. Joseph's Building Society...	570	The Standard Fire and Marine Insurance Company of New Zealand	563
St. Leonards Municipal Council	600	The Transatlantic Fire Insurance Co.	563
St. Leonards Municipal Council, East	600	Trade Protection Society of N.S.W.	569
St. Mary's College ...	586	Transatlantic Marine Insurance Co....	563
St. Paul's College ...	585	Treasury...	606
St. Peter's Municipal Council...	600	Trust and Agency Company of Australasia ...	568
St. Vincent's Hospital ...	581	Union Bank of Australia ...	560
Sailors' Home ...	581	Union Club ...	571
Savings' Bank of New South Wales ...	560	United Insurance Company ...	563

	PAGE		PAGE
Universal Marine Insurance Company	563	Waterloo Municipal Council ...	600
University of Sydney ...	585	Water Police Court ...	604
Vaccine Institution ...	605	Waverley Municipal Council ...	600
Vale of Clwydd Coal Mining Co. ...	565	Wesleyan Church ...	589
Vice-Admiralty Court ...	592	Wesleyan Schools ...	587
Victoria Municipal Council ...	600	Wesleyan or Protestant Union Benefit Society ...	583
Victoria Insurance Companies—Fire Marine, Life, and Guarantee ...	563	Western Australia ...	623
Victoria ...	622	Woollahra Municipal Council...	600
Volunteer Club ...	571	Woollahra and Waverley United Omnibus Company ...	567
Volunteer Directory ...	613	Works, Secretary of ...	611
Waratah Coal Company ...	565	Young Men's Christian Association ...	584

# Southern Insurance Company. LIMITED.

REGISTERED CAPITAL - ONE MILLION STERLING.

PAID-UP - SEVENTY-FIVE THOUSAND POUNDS.

**HEAD OFFICE, MELBOURNE.**

SYDNEY BOARD OF DIRECTORS:

J. S. MITCHELL.  
A. A. SMITH.

JOHN KEEP.  
FRED. PARSONS.

OFFICE: EXCHANGE BUILDINGS, PITT STREET.

*JAMES LAIDLEY,*  
SECRETARY.

MARINE RISKS EFFECTED AT LOWEST RATES.

# SYDNEY Marine Assurance Company.

(UNLIMITED LIABILITY.)

LYONS' BUILDINGS, 227 GEORGE STREET.

**CAPITAL - - £100,000.**

*Directors.*

RICHARD JONES, Esq., *Chairman.*  
HENRY MORT, Esq. | A. H. C. MACAFEE, Esq.

*Agents.*

London—Mr. WILLIAM MORT, 155, Fenchurch Street.  
Brisbane—CLARKE, HODGSON AND CO.  
Newcastle—Mr. JOHN REID.  
MARINE SURVEYOR—CAPTAIN S. S. SUSTENANCE.

N.B.—Time Risks on Ships with particular average taken, subject to special arrangement.

Policies on Merchandise to Europe granted in Triplicate, payable in London in case of loss, if required.

A Table of the Rates of Premium can be obtained at the Company's Offices, Lyons' Buildings, George Street.

SAMUEL H. SMYTH, Manager.

# SYDNEY Insurance Company

OFFICES—PITT AND HUNTER STREETS.

FOR FIRE INSURANCE.

(Incorporated by Act of Council, 18 Vict., 1855.)

**CAPITAL - - - - £250,000.**

**DIRECTORS.**

GEO. W. LORD, Esq., M.L.A., *Chairman.*  
JAMES R. FAIRFAX, Esq., *Deputy Chairman.*  
HON. JOHN FRAZER, Esq., M.L.C.  
HON. S. D. GORDON, Esq., M.L.C.  
RICHARD JONES, Esq.  
RICHARD GRANT READING, Esq.

**SURVEYOR.**

WILLIAM MUNRO, Esq.

Agent for SYDNEY and SUBURBS.

E. RAMSAY.

**SECRETARY.**

ALEX. THOMSON.

A COLONIAL PROPRIETARY (with Unlimited Liability of Shareholders).  
Insurances against FIRE RISKS effected on a Liberal Scale of Rates.

ALEXANDER THOMSON,  
SECRETARY.



THE TRANSATLANTIC  
Fire Insurance Company of Hamburg  
(LIMITED).

CAPITAL - - - 4,500,000 Reichsmark (£225,000).

Trustees.

A. BAUER, Esq., Wandsbeck, of C. BAHR & KINDER, Batavia.  
E. BUSING, Esq., Bremen, of J. W. BASTIAN SOHNE, Bremen.  
J. HERTZFELD, Esq., Berlin, formerly HALLGARTEN & HERTZFELD, New York.  
E. HESSE, Esq., Altona, of HESSE, NEWMAN & Co., Altona.  
L. KNIFFLER, Esq., Dusseldorf, of L. KNIFFLER & Co., Yokohama, &c.  
E. KRAUSE, Esq., Hamburg, of E. KRAUSE & Co., Hamburg.  
M. MEYERSBERG, Esq., Hamburg, of M. MEYERSBERG, Hamburg.  
W. NISSEN, Esq., Hamburg, of SIEMSEN & Co., Hongkong, &c.  
A. VON PEIN, Esq., Hamburg, of HALLER, SOHLE & Co., Hamburg.  
P. PICKENPACK, Esq., Hamburg, of PICKENPACK, THIES & Co., Bangkok.  
A. SCHROEDER, Jr, Esq., Bremen, of G. H. & C. PRIMAVESI, Bremen.  
H. VAUPEL, Esq., Amsterdam, of DEICHMAN & VON RATH, Amsterdam.

Managing Director.

W. JACOBSEN, Esq., Hamburg.

B. FRERICH, Agent for N.S.W.,  
9 BRIDGE STREET, SYDNEY.

TRANSATLANTIC  
Marine Insurance Company, Limited,  
OF  
BERLIN.

CAPITAL - - RTHL.1,000,000 (£150,000).

HEAD OFFICE, BERLIN.

Directors.

HERMAN REIMAN, Esq., Berlin, Chairman.  
S. W. SCHULTEN, Esq. (Stewart & Co.), Berlin.  
L. RAVENE, Esq. (Jacob Ravene Soehne & Co.), Berlin.  
CONSUL GUSTAV GEBHARD (Gebhard & Co.), Elberfeld.  
CONSUL WILLIAM KUESTNER (Hch. Kuestner and Co.), Leipzig.  
HER. SCHNOOR, Esq. (Schnoor and Franke), Leipzig.  
F. A. ZIESCHE, Esq., Dresden.

Managing Director.—J. PFAEHLER, Esq.

LONDON OFFICE:

53A, OLD BROAD STREET.

Agencies at Batavia, Bombay, Brisbane, Buenos Ayres, Bremen, Calcutta, Cape Town, Hamburg, Hongkong, Liverpool, Madras, Melbourne, Monte Video, New York, Para, Pernambuco, Port Elizabeth, Rio, Santos, San Francisco, Shanghai, Singapore, Sydney, Wellington (N.Z.), Yokohama.

AGENT FOR SYDNEY,

S. MAC DONNELL,  
326, GEORGE STREET.

THE  
UNITED INSURANCE COMPANY,  
FIRE AND MARINE.

Capital, £500,000. Unlimited Liability.

HEAD OFFICE, 275 GEORGE STREET, SYDNEY.

DIRECTORS.

J. B. RUNDLE, Esq., Chairman; L. W. LEVY, Esq.; E. FLOOD, Esq.;  
RICHARD HILL, Esq., M.L.A.; JAMES EWAN, Esq.;  
A. LEARMONTH, Esq.

London Agent: WILLIAM RAE, Esq., 70 Cornhill, E.C.

Melbourne Agent: JOHN WATSON, Esq., 60 Collins Street, West.

F. T. WATKINS,  
Manager.

THE  
Standard Life Assurance Company

ESTABLISHED A.D. 1825.

Accumulated Funds exceed . . . . £4,821,000.

Annual Revenue exceeds . . . . £733,000.

HEAD OFFICE, George Street, Edinburgh.

SYDNEY OFFICE, 275 George Street.

LOCAL BOARD.

R. JONES, Esq., Chairman. T. SKINNER, Sen., Esq.  
HENRY PRINCE, Esq.

F. T. WATKINS, Agent and Secretary.



THE BRITISH & FOREIGN  
**Marine Insurance Company.**  
 CAPITAL - - £1,000,000.

## Directors :

THOMAS CHILTON, CHAIRMAN.  
 SAMUEL STITT,  
 FRANCIS A. CLINT, } DEPUTY CHAIRMEN.

FRANCIS C. BRAUN	EDWARD LAWRENCE
GEORGE COCKBURN	C. O. LEDWARD
JOHN P. DUFF	ROBERT MAXWELL
P. GEO. HEYWORTH	DAVID STUART
THOMAS HARRISON	H. T. WILSON
CHARLES HOLLAND	T. WILKINSON TETLY

## Underwriter :

R. N. DALE, Esq.

HEAD OFFICES—Exchange Buildings, Liverpool.

SYDNEY AGENTS:  
**LORIMER, MARWOOD & ROME,**  
 34 O'CONNELL STREET.

COLONIAL  
**Sugar Refining Company.**

Offices: 22 and 24 Bridge Street.

## Directors :

EDWARD KNOX, CHAIRMAN.  
 T. BUCKLAND, F. C. GRIFFITHS, WALTER LAMB,  
 ALFRED STANGER LEATHES.

General Manager—J. GRAFTON ROSS.

Solicitors—WANT &amp; JOHNSON.

Bankers—ORIENTAL BANK CORPORATION.

SUGAR MILLS—Southgate, Clarence River; Chatsworth, Clarence River;  
 Harwood, Clarence River.

REFINERY—Parramatta Street, Sydney.

DISTILLERY—Harwood, Clarence River.

## AGENCIES.

BRISBANE	PARBURY, LAMB & CO.
LONDON	F. PARBURY & CO.
AUCKLAND, (N.Z.)	JOHN BUCHANAN.

THE AUSTRALASIAN  
**Steam Navigation Company,**

(INCORPORATED BY ACT OF COUNCIL.)

CAPITAL PAID-UP - - - £320,000.

## Directors :

THOS. CADELL, Esq., Chairman.
J. MILSON, JUN., Esq., Deputy Chairman.
T. WALKER, Esq.
J. H. NEALE, Esq.
G. R. DIBBS, Esq., M.L.A.
M. METCALFE, Esq.

## Auditors :

E. M. STEPHEN, Esq.	G. RATTRAY, Esq.
---------------------	------------------

## Manager :

FRED. H. TROUTON, Esq.  
 Assistant Manager—WM. WILLIAMS.  
 Traffic Manager—H. J. SPIER.  
 Secretary—FREDERICK PHILLIPS.  
 Accountant—D. A. DAVIS.  
 Superintending Engineer—G. DAVIDSON.  
 Marine Superintendent—JAMES MONRO.  
 Storekeeper—R. PHILPS.

## AGENTS.

Melbourne—W. P. White & Co.	Cleveland Bay—S. F. Walker & Co.
Adelaide—G. A. & H. Bartlett.	Newcastle—W. K. Lockhead.
King George's Sound—J. M'Kail & Co.	Raymond Terrace—Richardson and Scully.
Brisbane—Henry O'Reilly.	Clarence Town—W. Stronach.
Maryborough—Graham & Co.	Morpeth—Tilmouth F. Dye.
Gladstone—E. M'Collim.	Auckland—John Reid.
Rockhampton—Wood & Wood.	Cardwell—George Rutland.
Port Denison—J. Palmer & Co.	Bundaberg—R. Stevenson.
Cooktown—J. C. Baird.	

Steamers are dispatched from the Company's Wharf as under :—

To Melbourne—Once or twice a week, as inducement offers.	To Port Denison—Every three weeks.
To Brisbane—Twice a week.	To Cleveland Bay—Every three weeks.
To Rockhampton—Once a week.	To Broad Sound—Every three weeks.
To Auckland—Fortnightly.	To Hunter River—Four times a week.
To Gladstone—Every three weeks.	To Cooktown—Fortnightly.

Fuller Particulars in Daily Advertisements.

By order of the Board,

**FRED. H. TROUTON, Manager.**

# CLARENCE AND NEW ENGLAND STEAM NAVIGATION COMPANY.

INCORPORATED 1866.

## DIRECTORS.

THOMAS FISHER, Esq., J.P., *Chairman.*

SAMUEL COHEN, Esq.  
WILLIAM LAYTON, Esq.

THOMAS HEWITT, Esq.  
ALEX. CAMERON, Esq.

## AUDITORS.

JAMES PAGE, Esq.

L. S. LOWENTHAL, Esq.

## SECRETARY.

THOMAS BAWDEN.

STEAMSHIPS—*New England, Perseverance, and Settlers' Friend.*

## ILLAWARRA

# Steam Navigation Company.

## THE STEAMERS OF THIS COMPANY

PLY BETWEEN SYDNEY & THE FOLLOWING PLACES,  
AT

## REDUCED RATES FOR CARGO AND PASSENGERS:

WOLLONGONG	KIAMA	SHOALHAVEN
ULLADULLA	MORUYA	CLYDE RIVER
MERIMBULA	EDEN	TATHRA.

*For Starting Periods see daily "HERALD" and "EMPIRE."*

N.B.—STEAMERS FOR HIRE FOR SEA OR HARBOUR PURPOSES.

# THE EASTERN & AUSTRALIAN Mail Steam Company, Limited.

## OVERLAND ROUTE

VIA

BRISBANE, NORTHERN QUEENSLAND PORTS,  
TORRES STRAITS, JAVA AND SINGAPORE,  
TO  
*Europe, India, China, Japan & America.*

The Steamers of the above Company are despatched monthly via Brisbane, taking Mails and Passengers for above Ports, and also Goods and Specie for Somerset, Java, Singapore, and Hongkong direct, or for transhipment to Europe, China, Japan, or America.

This Company having effected satisfactory arrangements with the MESSAGERIES MARITIME MAIL STEAMERS is prepared to book Passengers at a through rate to Marseilles, or any port at which the M. M. Mail Steamers call.

For full particulars as to RATES OF PASSAGE and other information, apply at the

*Office of the Company, 322 GEORGE STREET, SYDNEY.*

SCOTT, HENDERSON, & Co.,  
AGENTS.

# The Clarence Richmond Rivers STEAM NAVIGATION COMPANY.

INCORPORATED BY ACT OF COUNCIL.

CAPITAL

£50,000.

OFFICES: COMPANY OFFICE, SUSSEX STREET.

DIS:

THE HON. J. B.

CHAIRMAN.

THE HON. E. D. OGILVIE, M.L.C.  
THOMAS R. ALLT, Esq.

JOHN ALGER, Esq.  
JOHN SEE, Esq.

## STEAM BETWEEN SYDNEY AND THE CLARENCE RIVER.

THE swift and powerful paddle steamship, "AGNES IRVING," F. BRACEGIRDLE, Master, leaves Sydney for Grafton every Tuesday afternoon, leaving Grafton every Saturday, at 8 A.M. (weather permitting).

### FARES and FREIGHTS.

SALOON ... £3 10 0 STEERAGE ... £2 0 0  
Children under two years of age, free; from two to seven years, one-third; from seven to fourteen years, one-half fare.

### RETURN TICKETS, available for One Month.

SALOON ... £6 0 0 STEERAGE ... £3 10 0

DEAD WEIGHT .. .. £0 17 6 per ton

MEASUREMENT .. .. 1 2 6 "

WOOL .. .. 0 10 0 per bale

MAIZE .. .. 0 2 0 per bale

FREE WHARFAGE AND STORAGE AT SYDNEY, GRAFTON, AND SOUTH GRAFTON.

*The regularity with which these Steamers are despatched affords a special advantage to Passengers and Shippers of Cargo.*

N.B.—NO WHARFAGE CHARGES.

## STEAM BETWEEN SYDNEY AND THE MACLEAY RIVER.

THE favorite paddle steamship, "BALLINA," J. H. BEDFORD, Master, leaves Sydney for the Macleay every Monday, at 9 P.M. (weather permitting), with permission to call at Port Macquarie as inducement offers.

### FARES.

SALOON .. £3 0 0 STEERAGE .. £1 15 0

### RETURN TICKETS, available for One Month.

SALOON .. .. £5 0 0

## STEAM BETWEEN SYDNEY AND THE RICHMOND RIVER.

THE new steamer "PLATYPUS," J. MAGEE, Master, leaves Sydney for the Richmond River every alternate week, as per advertisement in daily papers.

### FARES.

SALOON .. £4 0 0 STEERAGE .. £2 10 0

Sydney to their respective destinations affords a special advantage to Passengers and Shippers of Cargo.

FARES CHARGED.

JOHN WHITE, Secretary.

JAMES E. GRAHAM,

ACCOUNTANT

AND

PUBLIC AUDITOR,

BOX 104, POST OFFICE,

SYDNEY.

THE

Melbourne Steamship Company.

Steam to Melbourne, Newcastle, Brisbane, & Maryborough.

For MELBOURNE—Every TUESDAY and FRIDAY

For NEWCASTLE—Every TUESDAY and FRIDAY

For BRISBANE and MARYBOROUGH—Every alternate week (see Daily Papers)

Return Tickets (Saloon) available for Two Months by either Steamer.  
The Steamers leave Melbourne every Tuesday and Friday.

THE SALOONS ARE AMIDSHIPS.

W. HOWARD SMITH,

STRUTH'S WHARF,  
(Foot of King Street).

REUBEN HALL,  
ACCOUNTANT,

247 GEORGE STREET, SYDNEY,

Secretary and Legal Manager to the undermentioned Companies:

ARMSTRONG GOLD MINING COMPANY, Limited.  
TRY AGAIN GOLD MINING COMPANY, Limited.  
RAMPANT LION GOLD MINING COMPANY, Limited.  
FITZROY BESSEMER STEEL, HEMATITE IRON & COAL CO., Limited.  
BOOLBOONDA COPPER MINING COMPANY, Limited.  
EDINA COPPER MINING COMPANY, Limited.  
WOLCA COPPER MINING COMPANY, Limited.  
CITY OF SYDNEY QUARTZ MINING COMPANY, Limited.  
No. 1 OLD ROSE OF ENGLAND GOLD MINING COMPANY, Limited.  
GUYONG COPPER AND GOLD MINING COMPANY, Limited.  
MOUNT KEMBLA OIL AND COAL COMPANY.  
ARGYLE GOLD MINING COMPANY.  
MONTE CRISTO GOLD MINING COMPANY, Limited.  
POTOSI SILVER MINING COMPANY, Limited.  
GREAT BLACKALL COPPER COMPANY, Limited.  
OLD MAN REEF GOLD MINING COMPANY.

REUBEN HALL,

247 GEORGE STREET, SYDNEY.

PARRAMATTA RIVER STEAMERS DAILY,

Calling at Biloela, Fitzroy Dock, Hunter's Hill, Gladesville, Ryde, Ermington, Newington, Subiaco, and Parramatta.

From KING STREET, at 7, 9, 11 a.m.; 1, 3, 5 p.m. From PARRAMATTA, 7, 9, 11 a.m.; 1, 3, 5 p.m.

Extra trips to Hunter's Hill. (See Daily Advertisements.)

FARES AT ABOUT HALF THE RAILWAY RATES.

Freights per Special Cargo Steamer at Reduced Rates. Steam to Brisbane Water and Hawkesbury River Once a Week.

Steamers and Steam Launches for hire from £3 per day. Apply to the MANAGER, King-street Wharf, Sydney.

Sydney Meat Preserving Company

(LIMITED.)

OFFICE: 64 MARGARET STREET, SYDNEY.

WORKS: HASLEM'S CREEK, PARRAMATTA ROAD.

Directors:

Hon. JOHN LACKEY, Esq., M.L.A., Chairman.	
Hon. J. B. WATT, Esq., M.L.C.	G. W. LORD, Esq., M.L.A.
J. B. RUNDLE, Esq.	W. MORRIS, Esq., M.D.
Manager: ALBAN GEE.	Secretary: A. H. J. BAASS.

The Company's Meats obtained a Prize Medal at the Vienna Exhibition of 1873.  
Prices Current can be had on application at the Company's Office.

WILLIAM BOLES,

ARCHITECT,

TERRY'S CHAMBERS, 130 PITT STREET, SYDNEY.  
NEAR THE CITY BANK.

**CROSSE & BLACKWELL,**  
EXPORT AND ITALIAN WAREHOUSEMEN,  
SOHO SQUARE, LONDON.

SOLE AGENTS FOR NEW SOUTH WALES: VIRGOE, SON & CO.,  
Messrs. V., S. & Co., receive and forward Indents for execution.  
Indent forms and Price Lists may be obtained at their Offices.

**J. S. GILMORE,**

 **ARCHITECT,** 

251, GEORGE STREET,  
SYDNEY,

NEAR THE LONDON CHARTERED BANK OF AUSTRALIA.

Plans, Tracings, Specifications, Quantities, Reports, Valuations, &c.

**EDWARD HALLEN,**  
ARCHITECT, SURVEYOR & CIVIL ENGINEER,  
39 AND 41 NEW PITT STREET, SYDNEY.

N.B.—LICENSED SURVEYOR FOR "REAL PROPERTY ACT."

**J. HORBURY HUNT,**  
ARCHITECT & CIVIL ENGINEER,  
PACIFIC INSURANCE BUILDING,  
PITT STREET, SYDNEY.  
(SIDE ENTRANCE.)

**MR. THOMAS ROWE,**  
ARCHITECT,  
VICKERY'S CHAMBERS, PITT STREET,  
SYDNEY.

**BATE, MUSTON & CO.,**  
AUCTIONEERS,  
Stock, Station, House, Land, & General Commission Agents,  
MORTGAGES EFFECTED & ADVANCES MADE.  
213 PITT STREET, SYDNEY.

**F. BRADLY,**  
Auctioneer and Land Salesman,  
183 PITT STREET,  
SYDNEY,  
OPPOSITE THE CITY BANK.

**OSBORNE & CO.,**  
GENERAL AUCTIONEERS,  
HOUSE, LAND, & ESTATE AGENTS,  
PROPERTY EXCHANGE AUCTION MART,  
185 PITT STREET,  
OPPOSITE CITY BANK,  
SYDNEY.

Cash advanced on Goods sent in for Sale,

Also on Properties, Certificates, Merchandise, &c.

**HENRY VAUGHAN,**  
AUCTIONEER,  
HOUSE, LAND, ESTATE, HOTEL BROKER,  
AND GENERAL COMMISSION AGENT.  
RENTS AND DEBTS COLLECTED. LAW FORMS OF EVERY DESCRIPTION SOLD.  
149, KING STREET, EAST, SYDNEY.  
ESTABLISHED 1850.

# ORIENTAL TELEGRAM AGENCY (LIMITED),

*Working in connection with the*  
ANTILLES TELEGRAM AGENCY, LIMITED.

CHIEF OFFICE: 140 Leadenhall Street, London.  
SYDNEY OFFICE: 5 Spring Street.

TELEGRAMS despatched daily to all parts of GREAT BRITAIN, the CONTINENT, and AMERICA; also to INDIA and CHINA, as occasion offers.

PASSENGER TICKETS issued to Travellers, insuring advice of arrival, at a cost of Thirty Shillings.

The SOCIAL CODE of the Agency, comprising Ten Thousand compressed messages applicable to business, personal and family interests, is available to the public.

No charge for registration of addresses.

Tariffs, and all particulars, on application to

W. J. WESTON & CO.,  
AGENTS,  
5 SPRING STREET, SYDNEY

## THE CITY BEDDING FACTORY.

J. MURRAY,  
WHOLESALE AND RETAIL  
BEDDING MANUFACTURER

AND  
COCOANUT FIBRE MANUFACTURER,  
323 CASTLEREAGH STREET,  
TWO DOORS FROM BATHURST STREET; AND

569 & 571 KENT STREET,

(Off Liverpool Street) SYDNEY.

(Late Boon & Co.)

Mattresses and Palliasses made of the Best Materials, Horseshair, Pulu, Fibre, Flock, and Flax. Spring Mattresses Made to Order. Country Storekeepers and the Trade supplied 20 per cent. cheaper than any other house. Mattresses Cleaned and Re-made by Steam on the shortest notice. Trade List of Prices sent on application.

SOLE MANUFACTURER OF THE  
PATENT-COMPOSITE EXPANSIVE BEDSTEAD.

N.B.—DIAGRAMS AND LIST OF PRICES SENT ON APPLICATION.

# GILCHRIST, STUBBS & WESTON,

GENERAL AUCTIONEERS,  
VALUATORS & COMMISSION AGENTS,

273 GEORGE STREET,

UNDERTAKE THE DISPOSAL OF REAL PROPERTY, GENERAL  
MERCHANDISE, VESSELS, &c.

*Advances made on Properties or Merchandise for immediate Sale.*

*Rents Collected, &c.,*

COMMERCIAL SALE ROOMS,

273 GEORGE STREET, { OPPOSITE  
HUNTER STREET } SYDNEY.

W. J. WESTON & CO.,

Managers of Public Companies,

MINING AGENTS & METAL BROKERS.

ORES Purchased or Advanced upon for realisation or  
shipment. Consignments realised promptly to  
best advantage.

OFFICES: 5 SPRING STREET,  
SYDNEY.

**JAS. WM. BOGIE,**  
*AVERAGE STATER AND ARBITRATOR,*  
 9 BRIDGE STREET, SYDNEY.

**WILLIAM CHRISTIE,**  
**BOOKBINDER,**  
 136, WILLIAM STREET, WOOLLOOMOOLOO.

Music, Law Books, Libraries and Periodicals neatly bound.

**THOS. CORBETT,**  
 (Successor to J. CONYER, late of Park-street.)  
 PRACTICAL BOOKBINDER,  
 308, CASTLEREAGH STREET, OPPOSITE ST. GEORGE'S CHURCH, SYDNEY.  
 N.B.—Country orders by Post, Rail, or Steamer promptly attended to.

**GEORGE ROBERTSON,**

IMPORTER OF

**BOOKS & STATIONERY,**

**PUBLISHER & MANUFACTURING STATIONER,**

125 NEW PITT STREET,

**SYDNEY,**

AND AT MELBOURNE, ADELAIDE & LONDON.

**P. MACMAHON,**  
**WINE AND SPIRIT MERCHANT,**  
 AND BONDING WAREHOUSEKEEPER,  
 Macquarie Bond, Circular Quay, Sydney.

**CHARLES MURPHY,**  
**BRASS, BELL AND SHIP FOUNDER,**  
 80 DRUITT STREET,  
 OPPOSITE THE (NEW) TOWN HALL,  
 SYDNEY.

N.B.—The Highest Price given for Old Metal. All Orders Punctually Attended to.

**BURROWS & GLEESON,**  
 ADELAIDE BREWERY,  
**WAVERLEY, SYDNEY.**

**EDMUND A. EBSWORTH,**  
 EXCHANGE BUILDINGS,  
 AND  
 UNDERWOOD STREET, SYDNEY.  
 Is prepared to effect immediate Sales or Purchases of WOOL, TALLOW, HIDES, etc.,  
 ADVANCE ON SHIPMENTS,  
*Secure the Lowest Rates of Freight for all Produce consigned to his friends in London,  
 and purchase there or in Sydney every description of Settlers' Supplies on the most favorable terms.*

WOOL REPAKED & MADE MERCHANTABLE.

**CHATFIELD & MACKENZIE,**  
 Stock & Share Brokers & Financial Agents,  
 69 PITT STREET, SYDNEY.

**SUTTON, LEE & JOHNSTON,**  
**CONTRACTORS & CARRIERS,**  
 237 GEORGE STREET,  
 SYDNEY,

NEARLY OPPOSITE BRIDGE STREET.



# DUNRICH BROTHERS, Shipping and Family Butchers,


474 GEORGE STREET, opposite Fruit Markets;  
196 CASTLEREAGH STREET, near King Street; and  
Corner of GOULBURN & CASTLEREAGH STREETS,  
SYDNEY.

Special attention will be paid to the supplying of Club Houses, Private Families & others.

N.B.—Smoked Beef, Smoked Ox Tongues, Smoked Mutton Hams, Smoked Bacon in Roll and Side, Spiced Beef and Beef Hams, &c., which are always to be obtained at our above-named establishments.

DUNRICH BROTHERS,  
SHIPPING & FAMILY BUTCHERS.

W. A. DIXON, F.C.S.,  
ANALYTICAL CHEMIST,  
42 HUNTER STREET,  
SYDNEY.

 Five years Assistant in University Laboratory, Glasgow.

HENRY'S  
COLONIAL OINTMENT  
(REGISTERED).

Recommended by the Faculty, patronised by the Public, and approved of by all—is the result of the Proprietor's Thirty Years' Colonial Medical and Chemical experience.  
To be obtained from all Druggists and Storekeepers, in lid pots, from 1s. each, and at the drug stores of the inventor and proprietor.

JAMES HENRY,  
754, GEORGE STREET SOUTH, 3 DOORS SOUTH OF COMMERCIAL BANK, HAYMARKET  
SYDNEY, NEW SOUTH WALES.

H. POTTER,  
FAMILY AND DISPENSING CHEMIST,  
CITY DRUG STORES,  
CORNER PITT & KING STREETS,  
SYDNEY.

N.B.—Importer of genuine drugs, chemicals, &c., from the first English, French, & American houses.

J. BENNETT,  
COACH AND WAGGON BUILDER.

(ESTABLISHED 1853)

PARRAMATTA ROAD, CAMPERDOWN,  
SYDNEY.

Manufacturer of Buggies and American Carriages of every description.

STEPHEN GLASSON,  
COACH BUILDER & GENERAL WHEELWRIGHT,  
444, 446, & 448, PITT STREET,  
(NEAR HAYMARKET),  
SYDNEY.

DRAYS AND CARTS ALWAYS ON HAND.

BIDDELL BROTHERS,  
MANUFACTURING CONFECTIONERS,  
495 & 497 GEORGE STREET, SYDNEY.

SYDNEY TIN SMELTING WORKS.

MILNE BROTHERS,  
130 SUSSEX STREET, SYDNEY  
COPPERSMITHS,  
Brass Founders, Plumbers and Gasfitters.

MR. GUSTAVUS GABRIEL,  
**DENTIST,**  
 20 WYNARD SQUARE, 20  
 SYDNEY.

~~NOT~~ AT HOME DAILY FROM TEN A.M. TILL FIVE P.M.

**SPECIALITIES.**

The perfect adjustment of Artificial Teeth from a single Tooth to a Double Set.  
 Regulating Children's Teeth, Scaling, and Extracting.  
 Stopping Decayed Teeth and thereby rendering them SOUND AND USEFUL.

**PAINLESS OPERATIONS.**

MR. G. GABRIEL trusts that his patients in Town and Country will particularly note his address, and not be misled by similarity of names, as he has no connexion with any other practitioner in the colony.

**RAMSAY'S**  
 HOUSE, LAND, AND ESTATE AGENCY,  
 COLE'S CHAMBERS,  
 410 GEORGE AND KING STREETS,  
 Opposite English and Scottish Bank,  
 SYDNEY.

N.B.—Furnished Houses, also Apartments, procurable without notice.

**ALFRED  FLACK,**  
**DIE SINKER AND ENGRAVER**

TO THE VARIOUS GOVERNMENT OFFICES, ETC.,  
 No. 6, BARRACK STREET, SYDNEY.

Office Seals, Bankers' & Merchants' Endorsing Stamps, Heads of Newspapers.  
 Wine Merchants' Seals, Punches and Brand Irons, Stamps and Seals for Counties and  
 Corporations, Bookbinders' Tools. Spoon Makers' and Jewellers' Dies and Punches.

**AUSTRALIAN DYE WORKS.**

**A. COX,**  
 SILK, WOOLLEN AND COTTON DYER,  
 No. 55 WILLIAM STREET, WOOLLOOMOOLOO,  
 and 819 GEORGE STREET SOUTH (Opposite Railway Station), SYDNEY.

N.B.—COUNTRY ORDERS PUNCTUALLY ATTENDED TO.

**C. W. ROGERS,**  
 DYER & SCOURER,  
 185 OXFORD STREET, late SOUTH HEAD ROAD,  
 OPPOSITE DARLINGHURST GAOL, SYDNEY.

**GREAT SALE**  
 OF  
**VALUABLE DRAPERY,**  
 CONSISTING OF  
**FRENCH MERINOS, FLANNELS, QUILTS, PRINTS,**  
 SHEETINGS, HOLLANDS, CALICOES, SHIRTS,  
 SHAWLS, MANTLES, TOWELS, HOSIERY, BLANKETS, &c.

**TO BE CLEARED OUT AT A GREAT SACRIFICE!**

**JAMES WALTER HANCOCK**

Having purchased for cash Stock in an Assigned Estate, which he  
 will offer to his friends and customers at

**A GREAT BARGAIN.**

A LARGE LOT OF BLANKETS (slightly soiled) TO BE SOLD AT HALF-PRICE.

**DENMARK HOUSE.**  
 D 2

# DAVID JONES & CO.,

OPPOSITE THE NEW POST OFFICE,

## GEORGE STREET, SYDNEY.

The most celebrated Establishment of the kind in the  
Australian Colonies.

FAMILY DRAPERY!

SILKS!!

HOSIERY & GLOVES!!!

MILLINERY!

COSTUMES!!

UNDERCLOTHING!!!

TAILORING!

FURNISHING!!

OUTFITTING!!!

We offer:

Large Selections!

Latest Novelties!

Real Value!

**DAVID JONES & CO.**

DRAPERY, DRAPERY.

PLAIN & FANCY DRAPERY at the LOWEST CHARGES,

**KELK AND ALFORD,**

415 George Street, Sydney, and William Street, Bathurst,

**IMPORTING DRAPERS, (Wholesale and Retail).**

COUNTRY ORDERS have our most careful attention. Prices or Patterns  
forwarded on application.

**GEORGE DUESBURY,**

ENGINEER, GENERAL SMITH, BOOTMAKERS' MACHINIST,

AND

INVENTOR OF THE TOE-CAP PERFORATING PRESS,

581 GEORGE STREET, SYDNEY.

**HALLIDAY'S ENGINE WORKS.**

**CHARLES HALLIDAY,**

**ENGINEER,**

ERSKINE STREET,

SYDNEY.

**UNION FOUNDRY.**

**TAYLOR AND WEARING,**

**IRON FOUNDERS,**

**GEORGE STREET, REDFERN.**

**MILLER & HARRISON,**

**STEAM SAW AND JOINERY MILLS,**

**ALBION WHARF, SYDNEY.**

EVERY DESCRIPTION OF BUILDING MATERIALS ALWAYS ON HAND.

## SPECIALITIES.

Views of City, Harbour, and Botanic Gardens of Sydney, for beauty and variety unequalled, from 6d. to 4s. 6d. each. Photographs from celebrated pictures (unmounted), a stock of 10,000, in various sizes, from 5s. to 24s. per dozen. Portraits of celebrated Personages—Regal, Clerical, Political, Literary, Dramatic, Operatic, &c., 1s. 6d. each. The Carandini Portraits, a new series, carte and cabinet, just received from Melbourne, unusually fine examples of portraiture, by Hewitt of Swanston-street, cartes, 1s. 6d.; cabinets, 2s. 6d. each. England's magnificent Photographs of Modern Statuary, cabinets, 2s.; 9 x 7, 4s. each. Wilson's superb Stereoscopic Pictures of English, Scottish, and Irish Scenery, English Cathedrals, Abbeys, &c., 15s. per dozen. Frith's universal series of Photographs, embracing views in all parts of the World, especially beautiful, 36s. per dozen; unmounted, 30s. per dozen.

**CLARKE,**  
**FINE ART PUBLISHER & IMPORTER,**  
**MUSIC REPOSITORY,**  
 317 GEORGE STREET, SYDNEY.

**BASSETT & SON,**  
**VULCAN FORGE,**  
 FOOT OF DRUITT STREET,  
**SYDNEY.**

**EVERY DESCRIPTION OF FORGINGS**  
 FOR  
**ENGINEERS, BLACKSMITHS, &c.;**  
 ALSO  
**AXLE BLOCKS FOR WHEELWRIGHTS, AND AXLES FOR**  
**COACHMAKERS,**

**SWANSEA**  
**WROUGHT AND CAST IRON**  
**GALVANIZING WORKS,**  
**FOOT OF DRUITT ST.,**  
**SYDNEY.**

**WILLIAMS AND EPHRAIM,**  
 MANUFACTURERS OF  
 Galvanized Iron Tubs, Buckets, Baths, Galvanized Iron Ridge Capping, Guttering, Down Pipes, Galvanized Iron Water Tanks, Sheet Iron and Cast Iron Materials of every description Galvanized; Iron Sheep and other Troughing; Iron Corn Measures; Chains, Nails, Spikes,  
 And every kind of Blacksmiths', Founders', and Ship Work Galvanized.

**JOSEPH BULLARD,**  
 TAILOR,  
 WOOLLEN DRAPER,  
 CLOTHIER,  
 MERCER,  
 { 360 }  
 SHIRT MANUFACTURER,  
 HOSIER,  
 HATTER;  
 OUTFITTER,  
**360—GEORGE STREET, SYDNEY—360**  
 (Under Freeman's Photo. Gallery.)

**JOSEPH BULLARD,**  
**360 GEORGE STREET,**  
**SYDNEY.**

Awarded First Prize Exhibition Medals, 1873.

**ROBERT MILLER,**

(Late Thompson and Miller)

**79 CLARENCE STREET, SYDNEY,**  
WHOLESALE & RETAIL GROCER.

**LONG AND ROARTY,**

HAIRDRESSERS,

PERFUMERS, WIG-MAKERS, AND ORNAMENTAL HAIRWORKERS,

**452 GEORGE STREET, SYDNEY.**

(Opposite Lassetter & Co.'s).

**W. GILROY,**

MANUFACTURER OF

**GILROY'S INIMITABLE BAKING & OTHER POWDERS,**  
SAUCES, &c.

Royal Persian Sherbert, Lemonade, Ginger Beer, Seidlitz, Soda Water  
Spruce Beer, Egg and Butter, Oyster, Custard, and  
Blanc Mange Powders, &c., &c.

ALSO,

OYSTER KETCHUP, EPICUREAN SAUCE, PLATE POWDER, &c.

**MANUFACTORY: NEWTOWN ROAD, SYDNEY, N.S.W.**

## CHARITABLE INSTITUTIONS & SOCIETIES AGENCY.

SUBSCRIPTIONS & DONATIONS FOR EITHER OF THE UNDERMENTIONED  
INSTITUTIONS THANKFULLY RECEIVED:

SYDNEY BENEVOLENT ASYLUM.

SYDNEY CITY MISSION.

BRITISH AND FOREIGN BIBLE SOCIETY.

RELIGIOUS TRACT AND BOOK SOCIETY.

HOME VISITING AND RELIEF SOCIETY.

SYDNEY RAGGED SCHOOLS.

SYDNEY FEMALE REFUGE SOCIETY.

CAMDEN COLLEGE, NEW SOUTH WALES.

HORTICULTURAL SOCIETY OF NEW SOUTH WALES.

**E. RAMSAY, COLLECTOR,**

410 GEORGE & KING STREETS, SYDNEY.

**C. E. CRANE & SON,**

IMPORTERS OF AND DEALERS IN ALL KINDS

OF

**BUILDING MATERIALS.**

*CITY CEMENT STORES,*

21 and 23 NEW PITT STREET, CIRCULAR QUAY, SYDNEY.

**JAPANESE AND CHINESE SHOW ROOMS.**

**T. S. DOUGLAS,**

**IMPORTER OF JAPANESE & CHINESE GOODS.**

Entrance to Show Room,

CHARLOTTE PLACE & 223 GEORGE STREET NORTH, SYDNEY.

**B. O. HOLTERMANN & CO.,**

**IMPORTERS & GENERAL COMMISSION AGENTS,**  
SYDNEY, NEW SOUTH WALES.

BRITISH, FOREIGN, AND COLONIAL AGENCIES UNDERTAKEN.

Sole Agents for the proprietor of "Holtermann's Life Drops."

WHOLESALE AGENTS FOR "LAVERS' SERVANTS' FRIEND,"  
THE CELEBRATED WASHING FLUID,

&c., &c., &c.

**A. L. LACKERSTEEN,**

Importer of

**INDIAN GHEENIES, GERRIES, PRESERVES, &c.**

Manufacturer of Jams, Bottled and Tinned Fruits, Pickles, Sauces, &c., &c.

Awarded the First Prize at the Intercolonial Exhibition in Melbourne  
1866, & Sydney, 1869-70-73, and 75, for excellence of quality  
and being well prepared for Market.

ESTABLISHED 1857.

6, MACQUARIE PLACE, SYDNEY.

**J. H. SMALL & Co.,**

**IMPORTERS OF PHOTOGRAPHIC GOODS.**

MANUFACTURERS OF ALBUMINIZED PAPER, & PHOTOGRAPHIC MATERIALS.

**173, CLARENCE STREET, SYDNEY,**

(NEAR BARRACK STREET.)

AND 43 LITTLE COLLINS STREET EAST, MELBOURNE.

**J. B. HOLDSWORTH,**  
 WHOLESALE & RETAIL  
 GENERAL  
**IRONMONGER,**  
 558 GEORGE STREET,  
 AND  
 WATERLOO STORES, MARKET STREET,  
 SYDNEY.

*Entrance to Iron Yard, Market Street, opposite Stores.*

IMPORTER OF

CARPENTERS', JOINERS', COOPERS', AND SMITHS' TOOLS  
 GARDEN AND FARMING IMPLEMENTS  
 NAILS AND SCREWS OF ALL DESCRIPTIONS  
 FENCING WIRE, WOOLPACKS, SEWING TWINE  
 WARD AND PAYNE'S, AND SORBY'S SHEEP SHEARS  
 FOOT SHEARS AND KNIVES, SHEEP AND CATTLE BELLS  
 CHAFF MACHINES, HAY KNIVES, FORKS AND RAKES  
 PLOUGHS, HARROWS, SCYTHES, SICKLES, SHOVELS, SPADES,  
 HOES, DIGGING AND MANURE FORKS  
 LIFT AND FORCE PUMPS  
 MOWERS, CORN CRUSHERS, CRACKERS, AND MILLS  
 SADDLERY, HARNESS, &c.  
 GUNS, RIFLES, REVOLVERS, POWDER, SHOT, &c.  
 CRICKET BATS, BALLS, GUARDS, GLOVES, GAUNTLETS,  
 STUMPS, &c.  
 BAR, SHEET, ROD, HOOP AND GALVANIZED IRON  
 COPPER—SHEET AND ROD  
 CAST, SHEAR, BLISTER, AND SPRING STEEL  
 AXLE ARMS AND BOXES, PORTABLE FORGES  
 WEIGHING MACHINES, SCALES, STEELYARDS  
 HOLLOW, TIN, BRITANNIA METAL, AND ELECTRO PLATED  
 WARE  
 IRON BEDSTEADS AND COTS  
 TABLE AND OTHER CUTLERY  
 ROPE, PAINTS, OILS, COLOURS, TURPENTINE AND VARNISHES  
 BROOMS, BRUSHES, MATS, LINES, TWINES, &c., &c., &c.  
 AND EVERY DESCRIPTION OF GENERAL HARDWARE.

N.B.—The Premises in George Street have undergone extensive alterations, and will be stocked with Goods, selected in England, from the best Manufacturers of the newest and best designs.

**ROBERTSON & ALLEN,**  
 CITY SAWING, PLANING & MOULDING MILLS,  
 BOTTOM OF DRUITT STREET, SYDNEY.

JOINERS' WORK ON HAND AND MADE TO ORDER.

Turnery, Architraves, Skirtings and Mouldings by steam power out of  
 WELL SEASONED TIMBER.

A large stock of Foreign and Colonial Timber, Laths, Posts, Rails, Palings, Shingles, &c.

**E. J. MILLS & CO.,**  
 Manufacturing Jewellers and Importers,  
 131 PITT STREET,  
 SYDNEY.

LONDON: 24 ELY PLACE, E.C. MELBOURNE: 82 COLLINS STREET, EAST.

**RIDING SCHOOL,**  
 BOURKE STREET SOUTH,  
 (Opposite Thurlow's Terrace, next to Baptist's Gardens.)

CARD OF TERMS FOR  
**EQUESTRIAN TUITION**  
 IN THE ART OF  
**RIDING & MANAGING THE HORSE.**

One set of 12 lessons for Ladies	...	...	...	...	...	...	...	...	...	£6 6 0
" " " " " " " " " " " "	...	...	...	...	...	...	...	...	...	5 5 0
One single lesson for Ladies	...	...	...	...	...	...	...	...	...	0 15 0
" " " " " " " " " " " "	...	...	...	...	...	...	...	...	...	0 12 6
Every lesson on the Road (time not limited)	...	...	...	...	...	...	...	...	...	1 1 0

Ladies and Gentlemen willing to form themselves into classes (of not less than six) instructed at a much reduced rate, as may be agreed upon.  
 Horses thoroughly broken and educated.

REDUCTIONS MADE FOR CHILDREN.

**RULES.**

I.—One hour is allowed for each lesson.  
 II.—An appointment being made, and not in due time revoked, the lesson to be forfeited, as the Riding Master is put to much inconvenience in the arrangement of his classes.

III.—The amount of all tuitions to be paid in advance.

J. D. v. PALESKE, Riding Instructor.

INTERCOLONIAL EXHIBITION 1874, HIGHLY COMMENDED FOR CORDIALS  
AND AERATED WATERS.

ALSO AWARDED TWO PRIZE MEDALS INTERCOLONIAL EXHIBITION, 1875.

**HUME AND PEGRUM,**

MANUFACTURERS OF

LEMONADE, TONIC WATER, SODA WATER, LIQUEURS, CORDIALS, &c.

Awarded First Prize Medal for Dr. McMahon's Compound Extract of Sarsaparilla.

Highly recommended by the Trade and Medical Faculty for superior quality. All articles warranted to keep twelve months. Shipping and Country orders promptly attended to. HUME & CO. take the opportunity of acknowledging the generous patronage of their friends, and beg to assure them that their best efforts shall be employed to secure their future favours—Quality always good.

Prices lowest consistent with a really good article. Supply unfailing in the hottest weather.

Address—HUME & CO., 105 Regent Street, Chippendale, Sydney.

**MASON BROTHERS,**

MERCHANTS,

SPRING STREET,

SYDNEY.

**E. J. TEBBATT,**

MANUFACTURER OF

BOOTS, SHOES, BOOT UPPERS,

SADDLERY AND HARNESS,

Importer of English & Foreign Boots & Shoes,

LEATHER & GRINDERY,

SADDLERS' IRONMONGERY & ELASTIC WEBBING.

OFFICE AND WAREHOUSES:

60 RILEY ST., {Near William St.} WOOLLOOMOOLOO,  
SYDNEY.

**G. F. MASON,**

LESSEE,

**MARINE SURVEYOR, WHARFINGER,**

Commission and Produce Agent, &c.

PATENT SLIP WHARF, SUSSEX STREET, SYDNEY.

Superior Accommodation for Intercolonial Traders and Coasters. Good storage and large yards for stacking timber. Timber measured, received and delivered.

Discharging Clerks if required.

Bacon, Pork, Beef, Maize, Cedar, and other Colonial Produce constantly on sale.

**JOHN HAGEN,**  
IVORY TURNER,  
FANCY REPOSITORY,  
313 GEORGE STREET, SYDNEY.

**PATTEN BROS.,**

THE

AUSTRALIAN & ITALIAN MARBLE WORKS,

342 & 344, PITT STREET, SYDNEY.

ESTABLISHED 1835.

Importers of Marble and Enamelled and Plain Slate Chimney Pieces, Plaster of Paris, and Portland Cement.

Every Description of work in Marble, Slate, and Stone executed.

**SHEPHERD & Co.,**  
Nurserymen and Seed Merchants,

DARLING NURSERY, SYDNEY.

ESTABLISHED 1827.

Fruit Trees, Ornamental Trees, Shrubs, Bulbs, and Flowering Plants.  
Vegetable and Flower Seeds of every description and Prime Quality.

Lucerne, Clover, Perennial Rye, Prairie, and other Grasses.

DESCRIPTIVE PRICED CATALOGUES FREE ON APPLICATION.

**MARK STEPHENSON,**  
OAR & SCULL MAKER,  
ERSKINE STREET, SYDNEY,

(Opposite Polls and Paul, Ship Chandlers).



**DOBROYDE**  
**NEW-PLANT NURSERY,**  
**ASHFIELD,**  
**SYDNEY, NEW SOUTH WALES.**


*Trees and Plants of all kinds,*  
 AGRICULTURAL, FARM, GARDEN, & FLORISTS' SEEDS,  
*Flowering Bulbs & Tubers of every description.*  
 PALMS, CYCADS, DRACÆNAS, CORDALINES,  
 CROTONS, ORCHIDS, and TREE FERNS, &c.,  
 From the South Sea Islands, New Zealand, &c.  
**ALWAYS ON HAND.**

**ILLUSTRATED CATALOGUES FREE ON APPLICATION.**

**EXPERIENCED COLLECTORS ARE EMPLOYED**

In procuring Seeds and Trunks, &c., of Cycads, Palms, Cordalines, Crotons, Dracænas, Tree Ferns, and Orchids, &c., &c., &c. in the South Sea Islands and various parts of Australia and New Zealand.

Wardian Cases of every description made and carefully packed with Choice Plants, for all parts of the World.

 During the last twelve months the Proprietors have imported from the Principal English and Continental Nurseries over 6,000 Plants, and introduced nearly 1,000 varieties of plants new to the Australian Colonies.

*We beg to remind the Public that we have NO SYDNEY AGENTS, and therefore request that all Communications be addressed to the Superintendent,*  
**AT THE NURSERY.**

**G. HEWETT,**  
 OIL AND COLORMAN AND WAX CANDLE MAKER,  
 215 PITT STREET,  
 SYDNEY.

**RICHARD WATSON,**  
 HOUSE & SHIP PLUMBER,  
 GASFITTER,  
 149 YORK STREET,  
 SYDNEY.

PUMPS, BATHS, WATER CLOSETS, &c., MADE, FIXED, AND  
 REPAIRED ON THE SHORTEST NOTICE.

**LICENSED TO LAY ON WATER,  
 IRON OR LEAD PIPES.**



**MR. FREEMAN,**  
 LATE OSWALD ALLEN,  
**ARTIST PHOTOGRAPHER**  
 (By appointment to his Excellency Sir Hercules Robinson, K.C.B., and the Hon. Lady Robinson),  
 CRAYON PORTRAIT & MINIATURE PAINTER,  
 360 GEORGE STREET, SYDNEY (Opposite Elvy's Music Depot).  
 Awarded first Prize Intercolonial Exhibition, value 10 Guineas, also Silver and Bronze Medals, 1882.

**HAWKEN & VANCE,**  
 Commission Agents & Produce Merchants,  
 103 SUSSEX STREET, SYDNEY.  
 N. HAWKEN, J. E. VANCE.

## BUZACOTT & ARMSTRONG, IMPORTERS OF

Ship's Rigging, Cable Chains and Anchors, Canvas, Tarpaulins, Ore Bags  
Oars, Paints, Oils, Bunting, Flags, Engineers' Stores, General Ship  
Chandlery, and Ironmongery.

### SHIP CHANDLERY STORES:

39 & 41 WHARF STREET, MARKET WHARF,

### IRONMONGERY STORE:

Corner of MARKET AND CLARENCE STREETS.  
*GENUINE GOODS AT LOWEST MARKET RATES*

## TIDSWELL, WILSON & Co.,

STATION AGENTS,

Importers, Wine and Spirit Merchants,

80 CLARENCE STREET,

TWO DOOR FROM ERSKINE STREET,

SYDNEY.

## JOHN REDGATE & SON,

MILLERS & FLOUR MERCHANTS,

COMMERCIAL FLOUR MILLS, SUSSEX STREET SOUTH,

COFFEE & SPICE MILLS, YURONG STREET, WOOLLOOMOOLOO.

Silk Dressed Superfine, Fine, and Second's Flour from the  
best Adelaide Wheat.

Wheat Meal, Maize Meal, Bran and Pollard, &c., at the lowest  
Market Rates.

SOLE MANUFACTURERS OF

REDGATE'S PATENT MEAL.

## J. HUBERT NEWMAN, PORTRAITIST.

PHOTOGRAPHER BY APPOINTMENT TO  
HIS EXCELLENCY SIR HERCULES ROBINSON, K.C.M.G.

RECIPIENT OF THE HIGHEST AWARD FOR  
PHOTOGRAPHS AT THE MELBOURNE EXHIBITION OF 1875,

*Together with 17 different awards for excellence of*

PHOTOGRAPHIC & CRAYON PORTRAITS

FROM THE

Sydney Agricultural Society's and Art Academy's Shows,

UP TO THE LATEST DATE,

AND THE

LONDON EXHIBITIONS OF 1871 & 1873.

The work done at this Establishment includes Life-size Photographs, Enlarged Photographs,  
and Reproductions, Oil, Crayon, and Water Color Paintings.

**N.B.—Sole place of Business:**

12 OXFORD STREET, HYDE PARK,  
SYDNEY.



## NEWMAN & CO.,

PHOTOGRAPHERS,

AND

Oil and Crayon Painters,  
LATE M. SCOTT.

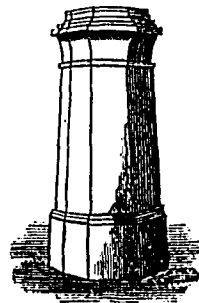
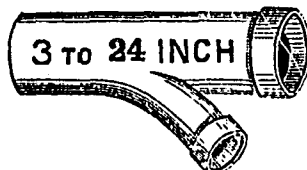
BY ROYAL APPOINTMENT TO  
His Royal Highness The Duke of Edinburgh, H.C. & H.C., &c.

392 GEORGE STREET, SYDNEY.

**FOWLER'S POTTERY,**  
AND  
**PATENT BRICK WORKS.**

CAMPERDOWN,

Near Sydney.



Drain Pipes with all necessary Bends and Junctions from 3 to 24 inch.  
Chimney Pots, Ginger Beer Bottles, Oven, Paving, and  
Garden Tiles; Paving and Building Brick of  
a very superior quality.

*The above may be had in any quantity at the lowest possible price.*

PRICE LISTS SENT ON APPLICATION.

TO CITY GROCERS, COUNTRY STOREKEEPERS, SHIPPING PROVEDORES  
AND CONSUMERS OF PRODUCE GENERALLY.

**MR. M. E. ROBSON**

BEGS most respectfully to inform the above, that having secured the commodious premises lately occupied by Mr. John Graham, and situated at No. 5 King-street, Sydney, he has commenced business therein as a

**COMMISSION AGENT,**

and is now in constant receipt of all kinds of Farm and Dairy Produce, which he is prepared to sell at current rates and on favorable terms.

Having been for many years a resident of the coast districts, M. E. R. has an extensive connection among Farmers and Dairymen, and can confidently assert that he is in regular receipt of some of the very best brands of Butter, Cheese, &c., &c.

As M. E. R. gives his unremitting personal attention to the business, it will be his aim to give satisfaction to all who may favor him with their patronage, and both city and country buyers may rely upon their orders receiving the utmost possible dispatch. Butter from Prize Butter makers; Cheese and Bacon from best makers; and Potatoes, Corn, Poultry and Hides regularly received and always on hand.

NOTE THE ADDRESS—

**M. E. ROBSON,**  
**NO. 5 KING STREET,**  
**SYDNEY.**

**CHARLES READ,**  
**THE CITY**  
**CARPET, FLOOR CLOTH, FURNISHING,**  
**UPHOLSTERY,**  
AND  
**BEDDING WAREHOUSE,**  
**THE OLD TELEGRAPH OFFICE,**  
**GEORGE STREET,**  
**SYDNEY.**

**NEW DESIGNS IN CARPETS,**

From the best known Manufacturers of the Period;

**BEST SEASONED FLOOR CLOTHS,**

FOR HALL, LOBBY, OR ROOMS,

**FROM 3s. YARD.**

**WINDOW BLINDS, CURTAINS, AND DRAPERIES**

*FITTED ON THE SHORTEST POSSIBLE NOTICE.*

**SOLE AGENT IN NEW SOUTH WALES**

FOR THE

**PATENT JAPANESE CURTAINS**

So Extensively Used in England and throughout the Continent of Europe.

## THE OLD HOUSE IN PARK STREET REMOVED OPPOSITE.

THOUGH the "Old House in Park Street" has faded away,  
His spirit who reared it will never decay,  
While the blood of the Saxon flows free in his veins,  
And the fire of the poet illumines his brains—  
While his hands can manipulate baskets galore  
For the mansions of wealth and the homes of the poor—  
Of the CANE and the WILLOW he'll yet have his share,  
And sing "Nil Desperandum"—never despair.  
Who rejoiced o'er his fall as they would at a wedding,  
Will find he his wisdom's teeth only was shedding;  
Like the Phoenix, they'll see, from his ashes arise,  
A flame that will take all the fire from their eyes;  
Of HIS trade he will yet skim the CREAM and the FAT.  
And "knock" all his opponents "into a cock'd hat."

### D. WILEY

Begs to inform his patrons, the public, and FRIENDS (if such beings be), that after being the sport of Dame Fortune threescore years, she has handed him over to the tender mercies of her fickle daughter, Miss Fortune, who has decreed that "in the sere and yellow leaf" he must again enter the arena of life and battle for bread.

With a view to fulfil his destiny, he trusts that some few (at least) of the abovementioned will give such support as will enable him to earn a crust, albeit by the sweat of his brow.

### D. WILEY,

**BASKET MAKER AND CHAIR CANER.**

*Baskets of every description, from a child's rattle to a balloon car.*

### H. W. CALLAN,

**PRACTICAL CARVER AND GILDER,**

*Looking-Glass and Picture-Frame Maker,*

355 GEORGE STREET (READ'S CARPET WAREHOUSE),  
SYDNEY.

Every description of Gilt Work made and re-gilt equal to new. Looking-Glasses re-silvered.  
Oil Paintings skilfully cleaned, lined and restored. Choice Chromo-Lithographs,  
Oleographs, and Engravings for sale at moderate prices.

### R. SMITH,

**Carver, Gilder, and Picture-frame Maker,**  
175 CLARENCE STREET, NEAR BARRACK STREET,

AND

113 CLARENCE STREET, NEAR BRISKINE STREET,

(LATE OF YORK STREET)

SYDNEY.

N.B.—OLD FRAMES RE-GILT.

## G. GUYATT,

THE ONLY PRACTICAL

SURGICAL  INSTRUMENT

AND

TRUSS MAKER

IN THE COLONIES.

Manufacturer of Surgeons' Instruments, Artificial Limbs, and Appliances for Dislocations and Deformities of whatsoever nature, Fracture Cradles and SPINAL APPARATUS, with rack adjustments and Modern Improvements.

G. GUYATT has always in stock (of his own make) a large and varied assortment of TRUSSES, made on the latest and most approved principles, for Ruptures of every kind; and manufactures Trusses for unusual cases on the shortest notice.

**LEG INSTRUMENTS AND INSTRUMENTS FOR CLUB FOOT**

Of all patterns, according to the requirements of the case.

FIRST PRIZE, INTERCOLONIAL EXHIBITION, 1875.

293 GEORGE STREET, OPPOSITE HUNTER STREET,  
SYDNEY.

## HOMŒOPATHY.

COLLINS'S

SYDNEY HOMŒOPATHIC PHARMACY & DISPENSARY,

(ESTABLISHED 1860)

297 GEORGE STREET.

The only Establishment of the kind in New South Wales where Homœopathic Medicines are prepared and kept, in strict conformity with the rule of the Homœopathic Pharmacopœia.

### MEDICINES FOR SALE.

Globules—6d. and 1s. per tube; post 1s. and 1s. 6d. Pills—1s. and 1s. 6d. per bottle; post 1s. 6d. and 2s. Tinctures—1s. and 1s. 6d. per bottle; post 1s. 6d. and 2s. 6d. Triturations—1s. and 1s. 6d. per bottle; post 1s. 6d. and 2s. The Homœopathic Preparation of Podophyllin—A valuable remedy for Indigestion and almost all Disorders of the Liver. Sold in bottles—1s., 1s. 6d., and 2s. 6d.; post free 1s. 6d., 2s. 3d., and 3s. 4d. Domestic Guides—(All the best Authors)—Dr. Laurie's Domestic Medicine—18s. and 22s. 6d. Epitome—6s. The Family Guide—1s. 6d. Dr. Epps' Domestic Instructor—6s. The Epitome—1s. 6d. Female Diseases—3s. Diseases of Children and Females—4s. Pulse and Epps—10s. 6d. Dr. Guernsey's Domestic Physician—10s. Epitome by Thomas—6s. Ruddock's Vade Mecum—6s. 6d. Ruddock's Stepping Stone—1s. 6d. Ruddock's Lady's Manual—4s. 6d.; and Diseases of Infants and Children—5s. Dr. Pope's Mother's Medical Hand-Book—5s.

**SYDNEY HOMŒOPATHIC PHARMACY AND DISPENSARY,**  
297 GEORGE STREET (Opposite Hunter Street).

ESTABLISHED 1856.]

F. N. COLLINS (LATE JOHN BELL).

## MEDICAL WONDER.

We do hereby give notice that we have been appointed Attorneys for Dr. HENRY YUMCHY STEELE, and SOLE Agents for his celebrated Medicine, "THE WORLD'S REMEDY," or "MEDICAL WONDER," and which we caused to be duly REGISTERED under the TRADE MARKS ACT of 1865.

A. J. WATT & CO., Family and Dispensing Chemists, 532 & 534 George Street, Sydney.

SOLE PROPRIETORS of the celebrated PECTORAL OXYMEL OF CARAGHEEN, or IRISH MOSS.

## CLARENDON HOTEL, FACING THE OCEAN, MANLY BEACH.

## Superior Private Apartments,

FOR

Families, Ladies and Gentlemen, Wedding Parties, &c.

LATE OF BRIGHTSIDE.

C. P. SARGEANT.

**EDWARD COLLINS,**  
HOUSE PAINTER, DECORATOR, WRITER AND GILDER,  
ETC., ETC.,  
No. 4 BRIGHTON TERRACE, DEVONSHIRE STREET,  
SURRY HILLS, SYDNEY.

COLONIAL LEATHER AND BOOTS.

WRIGHT, DAVENPORT, & CO.,  
TANNERS AND CURRIERS, WHOLESALE BOOT MANUFACTURERS,

AND

Importers of Elastic Web, Machine Silk, and General Boot-Making Materials,

No. 5 BARRACK STREET, SYDNEY,

FORMERLY AT 794 GEORGE STREET SOUTH,

Call the attention of Country Storekeepers, Leather Dealers, and others to the unusual facilities at their command for the execution of orders for Colonial-made Boots, Leather, Grindery, &c., &c.

**MR. ALFRED. H. MOORE,**  
**WRITING MASTER AND ILLUMINATOR.**

*Classes public and select for Ladies or Gentlemen day and evening.*

Addresses engrossed and richly illuminated on vellum, &c. Specimens on View. Albums ornamented. Flower painting, Church illuminating, &c., &c.

133 ADDRESS—SYDNEY WRITING INSTITUTION,  
34 PARK STREET, SYDNEY.

**H. AUROUSSEAU,**  
**CONFECTIONER, &C.,**

MANUFACTURER OF

ALL KINDS OF JAMS, JELLIES, & PRESERVED FRUITS.

WHOLESALE AND RETAIL.

CORSO, MANLY BEACH.

ESTABLISHED 1839.

**T. W. EADY & SON,**  
**TANNERS AND CURRIERS,**  
**COACH AND SADDLERS' IRONMONGERS,**

IMPORTERS OF

SADDLERY, COACH AND BUGGY FITTINGS,

Lamps, Axles, Springs, Bolts, Bent Rims, Spokes, Hubs, Shafts, &c.; Paints and Colors, Leather, Grindery, Elastic Webbing, Boot Uppers, Curriers' Tools, Vegetable Lamp-black, Rub and Grindstones, Black Oil, &c.

**54 YORK STREET,**  
**SYDNEY.**

**SADDINGTON & SONS,**  
IMPORTERS OF BOOTS, SHOES, LEATHER, GRINDERY  
AND  
MACHINERY FOR BOOT MANUFACTURERS,  
**152 PITT STREET,**  
**SYDNEY.**

TANNERY—ST. MARY'S, SOUTH CREEK.

**WOOL, TIN, LEATHER, HIDES, &c.**

We are prepared to make liberal Advances on Produce consigned to Messrs. SADDINGTON & Co., Coleman-street, London, who will also undertake the purchase and shipment of all descriptions of merchandise.

**SADDINGTON & SONS,**  
**152 PITT STREET, SYDNEY.**

**EXTRAORDINARY DISCOVERIES**

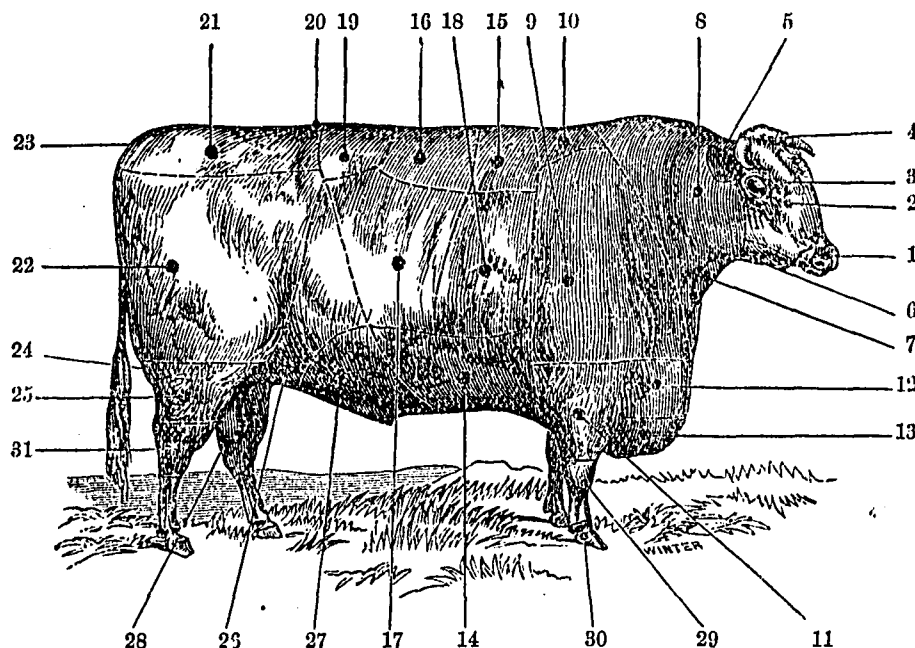
Made by the Government Veterinary Surgeon for the cure of human beings.

**Lumbago, Rheumatism, Gout, Bad Legs, Deformed Feet & Hands, Piles, &c.**

AFTER some months of careful observations, we are forced to admit that the public of Sydney are offered a healing agent for the above, and other diseases common to colonial life, which we are perfectly sure has never been excelled.

**THE SCOTTISH HIGHLAND OIL**

Is immediately absorbed into the blood, changing its dull black hue into a brilliant red, possessing a delicate nervous force, which may be felt as a tremulous motion in the muscles, which often instantly relieves a great many painful disorders, which render life unbearable. We have offered a few cases to illustrate the marvellous action of this Oil.

**THE GLENCAIRN SCOTTISH OILS**

Will reduce in a very short time any kind of Swelling or Enlargement in Man or Beast.

**CATTLE MEDICINES.**—PLEURO SPECIFIC VIRUS, Pleuro Lung Virus, Black Leg Virus, Cumberland Disease Virus, Red Water Medicine, Worm Medicine, Milk Fever Medicine, New Cattle Disease Medicine, Teat and Udder Oils, Cancer Powder and Oils, Looseness in Calves Medicine, Hoof Medicine and Instruments, Mange and Lice medicine.

**HORSE MEDICINES.**—Thorley's Condimental Food, Condition Powders and Balls, Alternative Powders and Balls, Fever Powders and Balls, Grippe Drench, Sprain Oil, Tumour Oil, Fistula Oil, Poll Evil Oil, Enlarged Hock Oil, Swelled Leg Oil, Greasy Heel Oil, Galled Back Lotion, Sore Shoulder Lotion, Incurable Wound Powder, Embrocation, Cough Drench, Broken Wind Drench, Worm medicine, Bone Blisters, Fly Blisters, Mange Lotion.

**SHEEP MEDICINES.**—Fluke Tonic Food or Medicated Salt, Worm ditto ditto ditto, Bottle ditto ditto ditto, Catarrh ditto ditto ditto, Loss of Wool Tonic Food ditto ditto ditto, Deficiency of Wool ditto ditto ditto, Bad Wool ditto ditto ditto, Weak Ewes' Tonic, Weak Lambs' Tonic, Abortion Tonic, Rams for the Season Tonic, Tick and Fly Blow Ointment and Lotion, Cumberland Disease Preventive and Cure, Black Leg Preventive and Cure, Foot Rot in its worst forms.

**J. POTTIE, 263 Elizabeth Street, Sydney,**

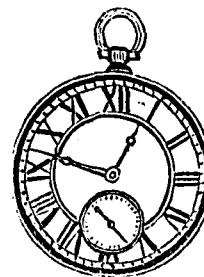
**GOVT VETERINARY SURGEON for the GOVERNMENT (N.S.W.)**

**WIGLEY (LATE OF GUYATT'S)  
SURGICAL INSTRUMENT AND TRUSS MAKER.**

Appliances for all kinds of Deformities Made to Order.

**CORNER OF BURTON AND OXFORD STREETS,  
SYDNEY.**

**HORN & PETERSEN,  
604, GEORGE STREET,  
BRICKFIELD HILL.**



**WATCH AND CLOCK MAKERS,  
Jewellers, Opticians, &c.**

N.B.—IMPORTERS OF WATCH MATERIALS AND WATCHMAKERS' AND JEWELLERS' TOOLS.

**604, GEORGE STREET, BRICKFIELD HILL,  
SYDNEY.**

**H. F. DELARUE,  
Watch and Clockmaker and Working Jeweller,  
AND IMPORTER OF WATCH MATERIALS AND TOOLS.  
(THE BIG CLOCK) 396 GEORGE STREET, SYDNEY.**

**W. STEWART,  
UNDERTAKER;  
117 BATHURST STREET,  
STEAM SAW MILLS AND CEDAR YARD,  
401 PITT STREET.**

**MRS. WAUGH,  
159 MACQUARIE STREET, Late of 3 Gladstone Terrace, Bligh Street  
SUITES AND APARTMENTS VACANT.**

TO PARTIES VISITING SYDNEY.

**GOLDSMITHS' HALL.**

**E. J. HOLLINGDALE,**  
**Watchmaker & Jeweller,**

Takes this opportunity of informing his Country customers and others, that he has opened a large assortment of goods, comprising—

**Gold & Silver Watches, Colonial Gold Chains, Alberts, Brooches, Ear-rings, Bracelets, Diamond Suites, Diamond Rings, &c., &c.,**

All made to order and of the latest designs, and which are offered at remarkably reduced prices. An inspection of the same is respectfully solicited.

NOTE THE ADDRESS:—

**E. J. HOLLINGDALE,**  
**GOLDSMITHS' HALL,**  
104 KING STREET, SYDNEY.

**MOORE, HENDERSON & BOWCHER,**

**Importers and Warehousemen,**

**217 PITT STREET,**

**SYDNEY.**

And at 2 GREAT WINCHESTER STREET BUILDINGS,

**LONDON, E.C.**

**CHRISTOPHER NEWTON, BROTHER, & CO.,**

WHOLESALE

**WAREHOUSEMEN,**

**118, 120, 122, 124, 126 PITT STREET,**  
**SYDNEY.**

**LONDON OFFICES:**

**37 MOORGATE STREET, E.C.**

**HORACE WOOLNOUGH & CO.,**

**3 WYNYARD STREET, SYDNEY,**

And Carey Lane, London,

IMPORTERS OF

*Infants', Girls', Maids', and Women's Straw Hats, and Bonnet-Hats,*

MEN'S LEGHORN, BRAZILIAN, TUSCAN, PANAMA, & STRAW HATS,

FLOWERS, FEATHERS, RIBBONS, UMBRELLAS, LACES,

FURS AND MILLINERY,

HAT AND DRESS TRIMMINGS,

BLANKETS, CANVAS,

FLANNELS, CALICOES, PRINTS, HOSIERY, SHAWLS,

SILKS, MUSLINS, WINCEYS, DRESS STUFFS, ALPACAS,

MERINOS, COBURGS,

**HABERDASHERY.**

Regatta and White Shirts.

Cotton and Wool Crimean Shirts.

BELTS, BRACES, TIES, AND SCARFS,

*Men's and Boys' Felt Hats. Boys' and Men's Cloth Caps.*



**HUFTON, SHAW AND Co.,**  
96 PITT STREET, SYDNEY,  
WHOLESALE JEWELLERS & GENERAL IMPORTERS

OF

PRECIOUS STONES,  
GOLD AND SILVER WATCHES—ENGLISH AND GENEVA  
ENGLISH, FRENCH AND AMERICAN CLOCKS.

OPTICAL GOODS OF ALL DESCRIPTIONS,  
ELECTRO-PLATED WARE DITTO.  
TOBACCONISTS' WARE AND GENERAL FANCY GOODS.

SOLE AGENTS IN THE COLONIES FOR  
TIPPING AND LAW DEN'S  
BREECH AND MUZZLE-LOADING FOWLING PIECES,  
SNIDER, MARTINI-HENRY,  
AND OTHER SPORTING RIFLES, CARBINES, REVOLVERS, &c.,  
49 · ELIZABETH STREET, MELBOURNE,  
AND 24 HYLTON STREET, BIRMINGHAM.

**HEYDE, TODMAN & COMPANY,**

CENTRAL DEPOT FOR CAMERON'S CELEBRATED TOBACCO.

ON SALE.

"Raven,"  
"Lion,"  
"Cable,"  
"St. Andrew's,"  
"All the Rage,"  
"Canary,"  
"Signet,"  
"Eclipse,"  
&c., &c.,  
and the choicest  
Cut Tobaccos

in 2 & 4 oz. Packs.



CIGARS ON SALE.

"No. 2 Habana,"  
"Cortado,"  
"Cavita,"  
"Swiss,"  
"Murias,"  
"Figaro,"  
"Punch,"  
"La Escepcion,"  
"Sevillino,"  
"Espanola,"  
"Flor de Cuba,"  
"Aquila de Ore,"  
and all descriptions of  
Imported Cigars.

**WHOLESALE TOBACCO MERCHANTS,**  
476 GEORGE STREET,  
OPPOSITE THE MARKETS,  
SYDNEY.

**R. C. KNAGGS & CO.,**  
General and Nautical Stationers,  
CHART AND BOOK SELLERS.  
NAUTICAL ALMANACS, 1876 & 1877.

**ENGLISH PERIODICALS**

AND

**NEWSPAPERS**

SUPPLIED ON THE ARRIVAL OF EVERY MAIL.

**R. C. KNAGGS & CO.,**  
OPPOSITE COURT HOUSE, HUNTER STREET, NEWCASTLE.

**R. C. KNAGGS & CO.,**  
Apothecaries, Chemists and Druggists,  
IMPORTERS OF DRUGS, CHEMICALS AND PATENT MEDICINES,  
NEWCASTLE MEDICAL HALL,  
OPPOSITE THE COURT HOUSE,  
HUNTER STREET, NEWCASTLE.

This Establishment is always supplied with the Purest and most Genuine  
Drugs and Chemicals, Patent Medicines, Perfumery, Tooth  
Brushes, Sponges, &c., &c.

The Compounding of Prescriptions strictly attended to under the personal  
superintendence of Mr. R. C. KNAGGS, M.R.C.S.L., &c.

SHIPS' MEDICINE CHESTS REFITTED.

**THOMAS HUBBUCK & SON,  
WHITE LEAD, OIL, PAINT, AND VARNISH WORKS,  
24 LIME STREET, LONDON.**



**HUBBUCK'S  
PATENT  
WHITE ZINC PAINT.**

The most durable and beautiful Paint known. Is cheaper in use than White Lead, and is proved to be superior for all purposes than the pernicious Lead Paint, and equally adapted for all climates.

ITS WHITENESS IS UNAFFECTED BY BILGE WATER, BOILING SUGAR, OR NOXIOUS GASES. It is free from any poisonous ingredient, and suited in all respects to the use of the Painter. Each cask of Pure White Zinc is stamped—"HUBBUCK LONDON PATENT."

**HUBBUCK'S ANTI-CORROSIVE PAINTS.**

The most valuable protection to iron roofs, bridges, piers, ships, and buildings exposed to tempestuous weather and scorching sun.

**HUBBUCK'S ANTI-OXIDATION COMPOSITION.**

For coating Iron and Wood Ship's Bottoms; a preservative against fouling and corrosion. This composition is ready for immediate use, and obviates the waste of carrying unmixed Paints, Oils, Dryers, &c. It is also applicable to all the purposes of other Paints.

**HUBBUCK'S ANTI-INCRUSTATION BOILER COMPOSITION**

throws down the deleterious matters in the water which form the incrustation, and does not in the smallest degree injure the iron plates, rivets, or brass fittings.

**HUBBUCK'S PALE BOILED OIL,**

being much purer than raw linseed oil, is the only boiled oil that can be used for White and delicate coloured Paints. It dries quick and hard, never blisters, and is more durable.

**HUBBUCK'S BINNACLE AND COLZA OILS**

prepared expressly for Ship's Lights, Lighthouses, &c.

**HUBBUCK'S WHITE LEAD, COLOURS, OILS, AND VARNISHES**

properly packed for exportation.

**HUBBUCK'S PAINTS, OILS, AND VARNISHES**

are the Best and therefore the Cheapest. Beware of counterfeits of their Name and Trade Mark.

**CAUTION.**

Since the successful introduction of their Pale Boiled Linseed Oil, some dealers are selling coloured imitations as "Improved Boiled Oil," "Clear Boiled Oil," &c. These imitations are not to be depended on, and only cause disappointments and loss.

**CONVICTION.**

In April 1873, a Native Dealer, at Hongkong, was prosecuted and convicted of a fraudulent imitation of Hubbuck's Name and Mark, and of placing them on some spurious goods shipped from London.

**KILNER BROTHERS,  
MANUFACTURERS OF  
GLASS BOTTLES  
OF ALL KINDS.**

**PRIZE MEDAL**

AWARDED FOR

**GLASS BOTTLES, &c.,  
1862.**



*Manufactories—Thornhill, Lees, near Dewsbury; and Conisboro', near Rotherham, Yorkshire.  
London Offices and Warehouse—Great Northern Goods Station, King's Cross, London, N.*

By Royal



Command.

**JOSEPH GILLOTT'S  
CELEBRATED  
STEEL PENS.**

**SOLD BY ALL DEALERS THROUGHOUT THE WORLD.**

Every Packet bears the *fac-simile*  
Signature,

*J. A. GilloTT*

# J. DEFRIES & SONS'

## TABLE GLASS AND EARTHENWARE, LAMPS, CHANDELIERS & FOUNTAINS FOR INDIA.

By Appointment to Her Majesty

and Contractors to Government.

## CRYSTAL &amp; BRONZE

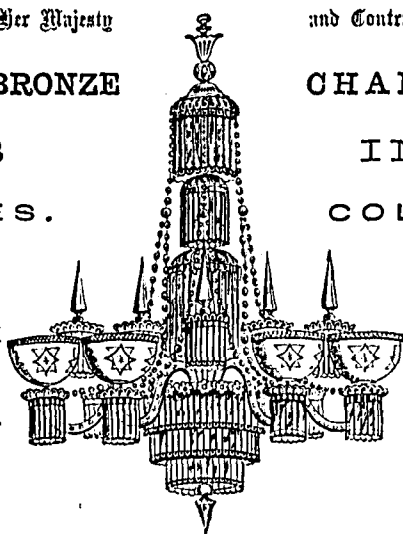
FOR  
GAS  
OR  
CANDLES.

NEW LAMP FOR INDIA.

J. DEFRIES &amp; SONS.

Illuminations, Decorations  
Flags, Trophies, & Pyrotechnic  
Displays for India.NEW DECORATIONS  
FOR THE  
DINING, DRAWING,  
AND  
BALL ROOM.

J. DEFRIES &amp; SONS.

Manufacturers of Storer's  
Patent Perpetual and Perfume  
CrystalTABLE FOUNTAIN,  
which, when complete with  
Flowers and Fruit, forms the  
most elegant ornament for Din-  
ing Rooms, Ball Rooms, Draw-  
ing Rooms, and Conservatories.  
They are portable, most elegant  
and new in design, and rich in  
appearance. Also theCONSERVATORY FOUNTAIN  
which is quite independent of a  
service of water pipes, tanks,  
and other expensive accessories,  
and having no mechanism, can-  
not possibly get out of order.  
Most Wonderful Invention of  
the Day.FOUNTAINS, FOUNTAINS,  
FOUNTAINS.In great variety from £2 17s.  
to 100 Guineas.In Crystal and Gilt, for the  
Dining Room and Drawing  
Room.In Crystal, Electro Plate or Gilt,  
for Conservatories.For the Sick Room, can be used  
with every kind of Perfume  
Water.Chemists, Druggists, and Per-  
fumers, can make satisfactory  
arrangements for the Sale of  
Storer's PatentPerpetual & Portable  
TABLE FOUNTAINSby applying to  
THE MANUFACTURERS.

## CHANDELIERS

FOR  
INDIA  
AND THE  
COLONIES.Contracts taken, and experienced  
men sent out, if required, as for  
HIS HIGHNESS THE NIZAM,  
Secunderabad, India, THE SUL-  
TAN and VICEROY OF EGYPT.

Estimates &amp; Designs Free.

\* Catalogues can be had on  
application at the Office of  
this Directory.

J. DEFRIES &amp; SONS

Also Manufacturers of  
Table, Glass China & Earthen-  
ware, Silver and Electro Plate,  
Crystal, Bronzed and Ormolu  
Chandeliers, Mirrors and Wall  
Lights for India, English and  
Foreign Clocks, Musical and  
Singing Bird Boxes.

WORKS:

LONDON, BIRMINGHAM  
and  
PARIS.

PRINCIPAL DEPOT,

147 HOUNDSDITCH, LONDON.  
(Established 1803.)

MEDALS.

International Exhibition, 1862.  
Paris Exhibition, 1867.PATTERN BOOKS  
OF  
EVERY DESCRIPTION.\* Orders must be accom-  
panied by a Remittance or  
Reference to a Firm in  
England.Dysentery,  
Cholera,  
Fever,**CHLORODYNE**Ague,  
Coup de Soleil,  
Colds, &c.

IS THE ORIGINAL AND ONLY GENUINE.

Vice-Chancellor Sir W. P. Wood stated that Dr. Collis Browne was undoubtedly the inventor of Chlorodyne: that the story of the defendant, Freeman, being the Inventor was deliberately untrue, which he regretted had been sworn to. Eminent hospital Physicians of London stated that Dr. J. Collis Browne was the discoverer of Chlorodyne; that they pre-  
scribe it largely, and mean no other than Dr. Browne's.—See *Times*, July 12, 1864.

The Public, therefore, are cautioned against using any other than

## DR. COLLIS BROWNE'S CHLORODYNE.

## REMEDIAL USES AND ACTION.

THIS invaluable remedy produces quiet, refreshing sleep, relieves pain, calms the system, restores the deranged functions and stimulates healthy action of the secretions of the body, without creating any of those unpleasant results attending the use of opium. Old and young may take it at all hours and times when requisite. Thousands of persons testify to its marvellous good effects and wonderful cures, while Medical men extol its virtue most extensively, using it in great quantities in the following diseases:—

**CHLORODYNE** is admitted by the Profession to be the most wonderful and valuable remedy ever discovered. **CHLORODYNE** is the best remedy known for Coughs, Consumption, Bronchitis, Asthma. **CHLORODYNE** effectually checks and arrests those too often fatal diseases—Diphtheria, Fever, Croup, Ague. **CHLORODYNE** acts like a charm in Diarrhoea, and is the only specific in Cholera and Dysentery. **CHLORODYNE** effectually cut short all attacks of Epilepsy, Hysteria, Palpitation and Spasms. **CHLORODYNE** is the only palliative in Neuralgia, Rheumatism, Gout, Cancer, Toothache, Meningitis, &c.

## EXTRACTS FROM MEDICAL OPINIONS.

The Right Hon. Earl Russell communicated to the College of Physicians and J. T. Davenport that he had received information to the effect that the only remedy of any service in Cholera was Chlorodyne.—See *Lancet*, Dec. 31, 1864.

From A. Montgomery, Esq., late Inspector of Hospitals, Bombay.—“Chlorodyne is a most valuable remedy in Neuralgia, Asthma, and Dysentery. To it I fairly owe my restoration to health, after eighteen months' severe suffering, and when other remedies had failed.”

Dr. Lowe, Medical Missionary in India, reports (Dec, 1865) that in nearly every case of Cholera in which Dr. J. Collis Browne's Chlorodyne was administered, the patient recovered.

Mrs. Forbes, wife of the Chaplain at Paris.—“I cannot speak too highly of Dr. J. Collis Browne's Chlorodyne; I have not in any single instance been disappointed with the result, even in aggravated cases of Indian Cholera.”

Extract from *Medical Times*, Jan. 1866.—“Chlorodyne is prescribed by scores of orthodox medical practitioners. Of course it would not thus be singularly popular did it not ‘supply a want and fill a place.’”

Extract from the General Board of Health, London, as to its efficacy in Cholera.—“So strongly are we convinced of the immense value of this remedy, that we cannot too forcibly urge the necessity of adopting it in all cases.”

BEWARE OF SPURIOUS AND DANGEROUS COMPOUNDS SOLD AS CHLORODYNE, FROM WHICH FREQUENT FATAL RESULTS HAVE FOLLOWED.

None genuine without the words, “Dr. J. Collis Browne,” on the Government Stamp.

Overwhelming Medical Testimony accompanies each bottle.

SOLE MANUFACTURER:

J. T. DAVENPORT, 33, Great Russell St., Bloomsbury, London.

Sold in Bottles, at 1s. 1½d., 2s. 9d., and 11s.

AGENTS: MELBOURNE—FELTON, GRIMWADE &amp; Co.

# DR. ROOKE'S ANTI-LANCET.

WHAT IS IT?

*A Handy Guide to Domestic Medicine. Every Household should possess a Copy.*

## DR. ROOKE'S ANTI-LANCET.

All Invalids should read the Chapter on the Functions of Digestion, showing by what process food is converted into blood—How blood sustains the whole system—How nervous power influences all the bodily organs to perform their allotted functions—Principles of life and death unfolded—Dying seldom accompanied with pain—Mental vision amplified prior to the death of the body—Immortality of the intelligent principle.

## DR. ROOKE'S ANTI-LANCET.

The Nervous, the Dyspeptic, or the Hypochondriac, should read the Chapter on the Origin of all Diseases from depression of nervous or vital power—How explained—Producing or exciting causes of nervous depression—Effects of the mind on the body—Effects of excessive joy—Anger—Grief and suspense—Sudden surprise and fright—Hard study—Hot relaxing fluids—Intemperance in eating and drinking—Spirituous liquors—Loss of blood—Impure Air.

## DR. ROOKE'S ANTI-LANCET.

Read the Chapter on the Destructive Practice of Bleeding, illustrated by the cases of Lord Byron, Sir Walter Scott, Madame Maltbron, Count Cavour, General "Stonewall" Jackson, and other public characters.

# CROSBY'S

BALSAMIC

# COUGH ELIXIR.

OPIATES, NARCOTICS, and SQUILLS are too often invoked to give relief in COUGHS, COLDS, and all PULMONARY DISEASES. Instead of such fallacious remedies, which yield momentary relief at the expense of enfeebling the digestive organs, and thus increasing that debility which lies at the root of the malady, modern science points to CROSBY'S BALSAMIC COUGH ELIXIR as the true remedy.

## DR. ROOKE'S TESTIMONIAL.

DR. ROOKE, Scarborough, author of the "Anti-Lancet," says:—

"I have repeatedly observed how very rapidly and invariably it subdued Cough, Pain, and Irritation of the Chest in cases of Pulmonary Con-

sumption; and I can, with the greatest confidence, recommend it as a most valuable adjunct to an otherwise strengthening treatment for this disease."

This medicine, which is free from opium and squills, and not only allays the local irritation but improves digestion and strengthens the constitution. Hence it is used with the most signal success in

ASTHMA,	CONSUMPTION,	INFLUENZA,	CONSUMPTIVE NIGHT SWEATS,
BRONCHITIS,	COUGHS,	QUINSY,	And all affections of the Throat and Chest.

Sold in Bottles, 1s. 9d., 4s. 6d., and 11s. each, by all respectable Chemists, and wholesale by JAMES M. CROSBY, Chemist, Scarborough.

\*. Invalids should read Crosby's Prize Treatise on "DISEASES OF THE LUNGS AND AIR-VESSELS," a copy of which can be had GRATIS of all Chemists.

## DR. ROOKE'S ANTI-LANCET.

All who wish to preserve health, and thus prolong life, should read Dr. ROOKE'S ANTI-LANCET, or HANDY GUIDE TO DOMESTIC MEDICINE, which can be had gratis from any Chemist, or post free from Dr. Rooke, Scarborough. Concerning this book, the late eminent author, Sheridan Knowles, observed:—"It will be an incalculable boon to every person who can read and think."

## DR. ROOKE'S ANTI-LANCET.

A clergyman, writing to Dr. Rooke, under date, July 15th, 1874, speaking of the "ANTI-LANCET," says:—"Of its style and matter I can judge, for I have been an author on other themes for thirty years. None but a master-mind among men could have conceived or written your Introduction. It is the most perfect delineation I ever read of the human frame, and the links between the material fabric and the spiritual unison of body and soul."

## DR. ROOKE'S ANTI-LANCET,

or, HANDY GUIDE TO DOMESTIC MEDICINE, can be had gratis of all Chemists, or post free from Dr. Rooke, Scarborough.

## DR. ROOKE'S ANTI-LANCET.

Ask your Chemist for a copy (gratis) of the last edition, containing 168 pages.

## NOTICE.

# MORSON'S EFFECTUAL REMEDIES

Are sold by Chemists and Druggists throughout the World.

**PEPSINE**, the popular and professional medicine for Indigestion, is MORSON'S PEPSINE, the active principle of the gastric juice. Sold in Powder, Lozenges, Globules; and as Wine in  $\frac{1}{4}$ ,  $\frac{1}{2}$ , and 1-pint Bottles.

**CHLORODYNE** is of such celebrity that it can scarcely be considered a specialty, its composition being known to practitioners. Many of the Chlorodynes being unequal in strength, MORSON & SON have prepared this. Sold at 1s., 2s. 6d., and 4s. Bottles.

**GELATINE**, the purest preparation is MORSON'S.

**PANCREATISED COD LIVER OIL** (perfectly miscible in water or milk), in Bottles 2s. 6d., 4s. 6d., and 7s. 6d. each.

Carefully packed and shipped. Orders made payable in England.

**THOMAS MORSON & SON,**

MEDALISTS AND JURORS AT ALL THE GREAT EXHIBITIONS,  
31, 33, & 124, SOUTHAMPTON ROW, RUSSELL SQUARE,  
LONDON

WORKS—HORNSEY AND HOMERTON.

**PURE CHEMICALS AND NEW MEDICINES**

Selected, and Shipping Orders executed with care and despatch.

# DINNEFORD'S FLUID MAGNESIA.



For thirty years the Medical Profession have approved of this pure Solution as the best remedy for ACIDITY OF THE STOMACH, HEARTBURN, HEADACHE, GOUT, AND INDIGESTION; and as a mild Aperient for Delicate Constitutions, especially adapted for Ladies, Children, and Infants. When combined with the

## ACIDULATED LEMON SYRUP,

it forms a most agreeable effervescing draught, in which its aperient and cooling qualities are much increased. In warm seasons and warm climates this simple preparation, when taken regularly, has been found highly beneficial.

# DINNEFORD & CO.,

CHEMISTS, &c.,

172, NEW BOND STREET, LONDON.

Sold by all respectable Chemists throughout the world.

**CAUTION.**—See that "Dinneford & Co." is on each Bottle, and red label over the Cork.

## SAVORY & MOORE'S CELEBRATED HOUSEHOLD MEDICINES.

### PANCREATIC EMULSION AND PANCREATINE (GENUINE.)

IN CONSUMPTION, WASTING, LOSS OF THE POWER OF DIGESTION and ASSIMILATION, the PANCREATIC EMULSION and PANCREATINE are the most potent Remedies. Where Cod Liver Oil fails, or cannot be tolerated by the stomach, the Pancreatic preparations are the only remedies that supply its place.

### PEPTODYN—THE NEW DIGESTIVE—Digests all kinds of Food.

The FARINACEOUS, FIBRINOUS, and OLEAGINOUS being a combination of the active principles of the several digestive secretions, Peptic, Pancreatic, &c.  
Peptodyn (powder) sold in bottles from 2s. to 21s.

### BEST FOOD FOR INFANTS.

"THE INFANT PRINCE THRIVES UPON IT AS A PRINCE SHOULD."—  
*Dr. Richardson.*

"RESEMBLES MOTHER'S MILK AS CLOSELY AS POSSIBLE."—  
*Dr. H. Barker on "Right Foods."*

This FOOD is rich in FLESH-FORMING and BONE-FORMING Constituents, and supplies in a greater degree than any other kind all that is needed for the healthful growth and development of children.

### JEREMIE'S SEDATIVE and ANTI-SPASMODIC, for Cholera, Diarrhoea, Spasms, &c.

Diminishes Nervous Excitement, allays Pain, and produces Sleep, without any of the objectionable symptoms which attend the employment of other Sedatives. In India and other tropical climates it is regarded as a *specific* for Diarrhoea, Cholera, Dysentery, and Nervousness.

### "DATURA TATULA," FOR ASTHMA AND BRONCHITIS.

"Of great efficacy in Asthma and Chronic Bronchitis."—*Dr. McVeagh.*

"I have never known an instance in which relief was not obtained."—*Gen. Alexander.*

"It is a remedy of great power and usefulness."—*Dr. Barker on Diseases of the Respiratory Organs*

As Tobacco, in tins; Cigars and Cigarettes, in boxes; and as Pastilles for inhalation, in boxes.

### ETHERODINE—Superior to Chlorodyne.—(This Title is Copyright.)

ETHERODINE is an elegant substitute for Chlorodyne, and far more convenient for use. Its therapeutical properties are DIAPHORETIC, ANTISPASMODIC, and SEDATIVE. It is a *clear bright* Fluid, pleasant to the taste, and readily miscible with water or any suitable menstruum.

### DR. JENNER'S ABSORBENT LOZENGES

Speedily and effectually correct HEARTBURN, FLATULENCE, and other evils attendant on an excess of Acid in the Stomach. They are eminently serviceable in relieving that form of Heartburn so common with ladies during pregnancy.

## SAVORY & MOORE,

Chemists to H.M. the Queen, H.R.H. the Prince of Wales, H.I.M. Napoleon III.,  
His Highness the Khedive of Egypt, &c.,

143, NEW BOND STREET, LONDON.

SOLD BY ALL CHEMISTS, DRUGGISTS, & STOREKEEPERS.

## WILLIAM MADDOCK, BOOKSELLER AND STATIONER.

ACCOUNT BOOKS MANUFACTURED,  
BOOKBINDING,

Letter-press, Copper-plate, & Lithographic Printing & Engraving

EXECUTED IN THE BEST STYLE,

383 GEORGE STREET, SYDNEY,

NEARLY OPPOSITE THE ROYAL HOTEL.

N.B.—A select CIRCULATING LIBRARY in connection with the Business, supplied with the Newest Books and Magazines by every Mail.

## WILLIAM BAILEY & SON,

BY APPOINTMENT,

MANUFACTURERS OF CHEMICALS FOR TELEGRAPHIC, PHOTOGRAPHIC, PYROTECHNIC,  
AND OTHER PURPOSES.

Contractors to Her Majesty's War Office, Admiralty, Post Office, India Office, and other Government Departments; also to the principal Railway and Telegraph Companies in Great Britain.

Great attention is given to the Manufacture of Chemicals and other preparations for Commercial and Scientific use.  
Works—Horseley Fields, Wolverhampton. London Office—2 & 3 Abchurch-yard, Cannon-st., E.C.

THE FOLLOWING SPECIALITIES ARE PARTICULARLY RECOMMENDED—  
BAILEY'S TANNATE OF SODA, for preventing incrustations in Steam Boilers, and removing the scale already formed therein, a considerable saving of fuel being also effected.  
Price 36s. per cwt.

BAILEY'S CLEANSING POWDER possesses very remarkable detergent properties, and when mixed with either fresh or sea water, cleanses every variety of Wood or Metal to which it may be applied. Price 28s. per cwt.

BAILEY'S SANITARY FLUID is specially adapted for Purifying the Atmosphere in Factories, Workshops, Hospitals, and Public Institutions, and for disinfecting purposes generally, Price 1s. 6d. per gallon.

## F. T. WIMBLE,

MANUFACTURER OF

LETTERPRESS & LITHOGRAPHIC PRINTING INKS,

VARNISH, BRONZES,

DRY COLOURS, MATERIALS, &c.,

70 LITTLE COLLINS STREET EAST,

MELBOURNE.

**BELLE VUE FAMILY HOTEL,**  
*Opposite Parliament House, Botanical Gardens,*  
**BBRISANE.**

**J. A. ZAHHEL, Proprietor.**

**MRS. REUBEN THOMAS**

(WIDOW OF THE LATE MR. R. THOMAS),

**UNDERTAKER,**  
**141 YORK STREET, SYDNEY,**

NEAR THE WESLEYAN CHAPEL,

FUNERALS CONDUCTED ON THE MOST REASONABLE TERMS.  
 N.B.—The Trade supplied on the shortest notice.

JUST RECEIVED A LARGE AND NEW ASSORTMENT OF  
**PHOTOGRAPHIC, WRITING & SCRAP ALBUMS,**

**TOURIST CASES & DESPATCH BOXES,**

*In Russia and Morocco Leather.*

**Glass Inkstands, Date Indicators & Work Boxes,**  
**ENVELOPE BOXES WITH BLOTTING CASES,**  
**MAHOCANY WRITING DESKS.**

Estimates given for all descriptions of Printing & Account Books.

**JOHN SANDS,**  
**392, GEORGE STREET,**  
**SYDNEY.**

**BELLE YUE FAMILY HOTEL,**  
*Opposite Parliament House, Botanical Gardens,*  
**BRISBANE.**

J. A. ZAHLE, Proprietor.

**MRS. REUBEN THOMAS**

(WIDOW OF THE LATE MR. R. THOMAS,

**UNDERTAKER,**  
**141 YORK STREET, SYDNEY,**  
 NEAR THE WESLEYAN CHAPEL.

FUNERALS CONDUCTED ON THE MOST REASONABLE TERMS.  
 N.B.—The Trade supplied on the shortest notice.

JUST RECEIVED A LARGE AND NEW ASSORTMENT OF  
**PHOTOGRAPHIC, WRITING & SCRAP ALBUMS,**

TOURIST CASES & DESPATCH BOXES,  
*In Russia and Morocco Leather.*

Glass Inkstands, Date Indicators & Work Boxes,  
*ENVELOPE BOXES WITH BLOTTING CASES.*  
**MAHOGANY WRITING DESKS.**

Estimates given for all descriptions of Printing & Account Books.

**JOHN SANDS,**  
**392, GEORGE STREET,**  
**SYDNEY.**

**JOHN SANDS,**  
**LAW STATIONER,**

Begs to direct attention to his Extensive and Complete Stock of

**LAW FORMS,**

Comprising those used in the

**SUPREME, COUNTY, INSOLVENT,**

AND

**POLICE COURTS;**

**CONVEYANCING, TRANSFER OF LAND**

AND

**MISCELLANEOUS.**

**PARCHMENTS,**

PLAIN;

**THIS INDENTURE, FOLLOWERS,**

**MORTGAGES,**

**CONVEYANCES, WITH & WITHOUT COVENANT,**

**MEMORIALS,**

**MEMORIALS STOCK AND WOOL,**

**WILL FORMS, JUDGMENT ROLLS,**

AND

**INSOLVENTS' CERTIFICATES OF DISCHARGE.**

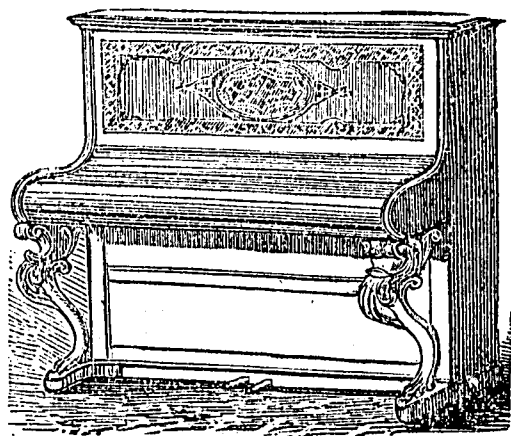
**SAUNDERS' H.M. & MACHINE WATERLINED & RULED BRIEF,**  
**DRAFT PAPER, RULED & PLAIN.**

Green Silk, China Ribbon, Russia Braid, Red Tapes, and every requisite  
 for a Solicitor's Office.

A LIST OF FORMS SENT ON APPLICATION.



# PALING & CO.'S PIANOS



OBTAINED THE  
FIRST PRIZE AT THE INTERCOLONIAL EXHIBITION  
OF 1875.

They Possess a Remarkably Full and Brilliant Tone and Elastic Touch,  
and the Workmanship is of the Best Quality, being

MADE EXPRESSLY FOR EXTREME CLIMATES.

PIANOFORTES

By Erard, Pleyel, Collard and Collard, Broadwood and Sons,  
Kirkman, and other Renowned Makers.

HARMONIUMS

BY ALEXANDRE, IN EVERY MODEL.

**W. H. PALING,**

AGENT FOR

ERARD, PLEYEL, AUCHER, KIRKMAN, & ALEXANDRE,

335 GEORGE STREET,

SYDNEY.

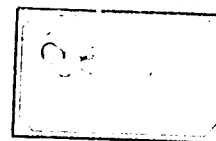
# WM. TAYLER & Co.,

## WHOLESALE & EXPORT

# DRUGGISTS,

## 219 PITT STREET,

## SYDNEY.



SOLE AGENTS FOR

## DR. D. JAYNE & SON'S

*Celebrated American Medicines.*