

THE COLONIAL MUTUAL LIFE ASSURANCE SOCIETY, LIMITED.

Registered in accordance with the Life Assurance Acts of Great Britain and the Colonies.

POLICIES
Unconditional,
Indisputable.

ANNUAL
INCOME
EXCEEDS
£200,000.



Voyaging and
Travelling without
restriction.

ACCUMULATED
FUNDS
EXCEED
£600,000.

*"The most successful Insurance Society in the Australian Colonies."—
Insurance Journal.*

Directors in New South Wales:

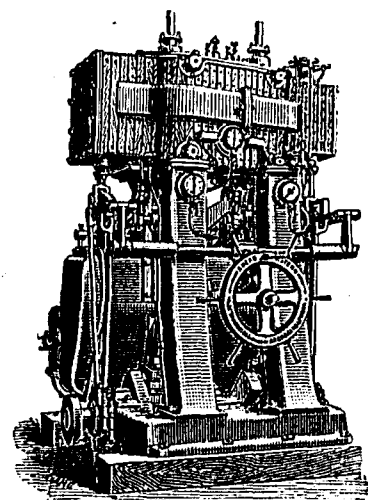
THE HON. J. F. BURNS, M.L.A., CHAIRMAN.
JOHN R. STREET. THE HON. ROBERT WISDOM, M.L.A.
THE HON. SIR PATRICK A. JENNINGS, K.C.M.G., M.L.A.

Offices: 105 PITT STREET, SYDNEY.

CONTENTS.

	PAGE.
INDICES	VII-XXXII
ALMANAC	XXXIII
MUNICIPAL	XXXVI
CITY STREETS DIRECTORY	1-131
SUBURBAN DIRECTORY	132-451
COMMERCIAL OR ALPHABETICAL DIRECTORY	458-947
TRADES DIRECTORY	949-1098
EUROPEAN TRADES LIST	1099-1101
GOVERNMENTAL AND PARLIAMENTARY	1103-1105
CIVIL DEPARTMENTS	1105-1119
NAVAL AND MILITARY	1119-1121
ECCLESIASTICAL	1165-1172
POSTAL AND TELEGRAPHIC, &c.	1122-1146
RAILWAY INFORMATION, &c.	1147-1156
FIRMS WITH FIXED PAY DAYS	1162-1164
TARIFF OF N.S.W. (CUSTOMS DUTIES)	1156-1158
STAMP DUTIES	1158-1161
ADDENDA (NAMES RECEIVED TOO LATE, &c.)	1172-1174
CENSUS	1174

SHANKS'



COMPOUND MARINE
ENGINE.

Direct from the Works.

ALEX^R SHANKS & SON'S
MACHINERY.

LAND
AND
MARINE
ENGINES,
BOILERS,
PUMPS.

LARGE STOCKS
WITH ALL
NEWEST DESIGNS
HIGHEST FINISH
AT
LOWEST COST!

CRANES
AND
HOIST'NG
ENGINES.
—
LAWN
MOWERS.

LOCOMOTIVES, TUGS, LAUNCHES, &c..
ESTIMATED FOR COMPLETE.

ROBERT COOPER WEBSTER,
SOLE AGENT.

Sydney:
111, PITT STREET.

Melbourne:
22, KING STREET.

MACHINERY.

GENERAL INDEX.

PAGE	PAGE	PAGE
Addenda (names received too late for insertion in original lists) .. 1172	Firms Connected with Telephone System .. 1138	Parliamentary Reporting Staff .. 1105
Agent-General in England .. 1105	Firms with Fixed Pay Days .. 1102	Permanent and Volunteer Military Forces .. 1120
Alphabetical Directory .. 453-947	Fisheries and Oyster Beds .. 1106	Petty Sessions (Suburban) Clerks of Police Courts .. 1112
Analytical chemist (Government) .. 1106	Fitzroy Dock .. 1111	Police Inspector-General .. 1108
Architect—Colonial .. 1111	Forest Conservancy .. 1109	Postal and Telegraphic Postmaster-General .. 1122
Assignees—Official and Trade, See Trade Section	Free Public Library .. 1108	Prisons Department .. 1119
Associates and Clerks of Arraigns .. 1112	Friendly Societies Registrar .. 1106	Professional Directory .. 1113
Associations .. 953	General Post Office .. 1119	Public Charities .. 1106
Asylums Department .. 1108	Geological Survey .. 1109	Public Instruction .. 1108
Attorney-General .. 1112	Governmental & Parliamentary .. 1103-1121	Public Works—Secretary for .. 1109
Audit Department .. 1108	Government Analytical Chemist .. 1108	Public Works—Board for Opening Tenders .. 1111
Australian Museum .. 1108	Government Asylums .. 1108	Quarter Sessions .. 1112 & 1113
Banks .. 958	Government Printing Office .. 1107	Railway Branch—Works Department .. 1109
Barracks and Ordnance Department .. 1108	Government Statistician .. 1106	Railway Information—General .. 1147
Barristers .. 956	Governors of New South Wales .. 1121	Registrar of Copyrights .. 1122
Bileela Industrial School for Girls .. 1108	Guardians of Minors .. 1120	Registrar-General .. 1105
Board of Health .. 1107	Harbours and Rivers Navigation .. 1111	Rivers Navigation .. 1111
Boatmen's fares .. 1101	Harbour Master .. 1108	Roads Branch—Works Department .. 1111
Botanic Gardens .. 1100	Health Board .. 1107	Royal Mint .. 1106
Cab fares .. 1153	Hospitals and Dispensaries .. 1021	Savings Banks Department .. 1110 & 1131
Cemeteries .. 980	Immigration Office .. 1108	School Lands .. 1108
Census .. 1174	Imperial Government Establishment .. 1105	Secretary of Finance and Trade .. 1106
Central Police Office .. 1112	Imperial Pensions .. 1107	Secretary for Lands .. 1118
Church and School Lands Office .. 1108	Improvement Board (City of Sydney) .. 1106	Secretary for Mines .. 1109
City of Sydney Improvement Board .. 1106	Insolvency Court .. 1106	Secretary Public Works .. 1111
City Streets Directory .. 1-131	Inspector-General Police .. 1106	Sewerage Branch—Public Works .. 1111
Civil Departments .. 1105	Inspector Public Charities .. 1106	Shaftesbury Reformatory .. 1108
Civil Service Board .. 1106	Institutes .. 1031	Sheriff's Department .. 1112
Claims to Grants of Lands .. 1112	Justice—Minister of .. 1111	Shipping Master .. 1108
Clerical .. 1105	Lands—Claims to Grants of .. 1112	Ships of War on Australian Station .. 1119
Clerk of the Peace .. 1113	Lands—Occupation of .. 1118	Small Debts Court .. 1113
Clerks of Petty Sessions—Suburban .. 1113	Lands—Secretary for .. 1118	Societies—Miscellaneous .. 1078
Clubs .. 983	Lands Titles .. 1105	Solicitors .. 1074
Coal Fields, &c., Department .. 1109	Law Institute .. 1113	Stamp Duties Office .. 1108
Colleges .. 1068	Legal Directory—See Trades Section for "Barristers," "Solicitors," &c.	Stamp Duties .. 1108
Colonial Architect .. 1111	Legislative Assembly .. 1104	Stamp Duties .. 1108
Colonial Distilleries, &c. .. 1108	Legislative Council .. 1103	Stipendiary Magistrates .. 1112
Colonial Secretary .. 1105	Libraries .. 1039 & 1108	Stock and Brands Branch (Secretary for Mines) .. 1109
Colonial Store Department .. 1108	Lunatic Asylums .. 1032	Streets Directory .. 1121
Commissioners for Affidavits .. 1115	Lunatic Asylums .. 1032	Suburban Directory .. 132-451
Commissioners for other Courts for taking Affidavits in N.S.W. .. 1116	Magistrates—Stipendiary .. 1112	Supreme Court .. 1111
Consuls .. 989	Mail Information .. 1122	Supreme Court Department .. 1119
Copyrights Registrar .. 1107	Marine Board .. 1108	Surveyor-General .. 1118
Coroner's Court .. 1113	Master in Equity .. 1112	Tariff of N.S.W. .. 1156
Crown Prosecutors .. 1112	Matrimonial Causes Court .. 1112	Technological Museum .. 1108
Crown Solicitor .. 1113	Medical Directory—See "Surgeons," Trades Section	Telephone Department .. 1119
Curator's Dept. (Supreme court) .. 1112	Medical Directory—See "Surgeons," Trades Section	Telephone System .. 1108
Customs .. 1107	Metropolitan Transit Commissioners .. 1120	Trade and Finance—Treasurer and Secretary .. 1108
Customs Duties .. 1156	Military Forces .. 1120	Trade Unions Registrar .. 1108
Darlinghurst Gaol .. 1113	Mines—Secretary for .. 1109	Trade Directory .. 949-1098
Deeds Branch—Registrar-General .. 1105	Minister of Justice .. 1111	Tramway Branch (Works) .. 1110
Departments (Government),—See respective names	Minister of Public Instruction .. 1108	Transit Commissioners .. 1120
Diamond Drill Branch (Secretary for Mines) .. 1109	Money Order and Savings' Bank Department .. 1119 & 1181	Treasurer and Secretary for Finance and Trade .. 1106
Distilleries and Sugar Refineries Department .. 1108	Municipal—See commencement of City Streets and respective Suburbs Museum .. 1108	Treasury .. 1107
District Courts and Quarter Sessions .. 1113	National Art Gallery .. 1109	Triangulation and General Survey of the Colony .. 1119
District Registrars .. 1106	Nautical Training-ship Vernon .. 1108	Vaccine Institution .. 1107
Divorce & Matrimonial Causes Courts .. 1112	Naval Brigade .. 1119	Vernon Training Ship .. 1108
Ecclesiastical .. 1165	Naval Department .. 1105	Vice-Admiralty Court .. 1119
Educational—See Schools .. 1068	Naval and Military .. 1119	Volunteer Information .. 1112
Electric Telegraphs .. 1110	Observatory .. 1108	Water Police Court .. 1112
English and Continental Manufacturers .. 1099	Occupation of Lands .. 1118	Wharfrage and Tonnage Rates .. 1154
English Mails .. 1122 & 1145	Officers of Legislative Council and Assembly .. 1105	Works (Public) Department .. 1120
Equity—Master in .. 1112	Ordnance and Barrack Department .. 1108	Works—Board for Opening Tenders .. 1111
European Manufacturers .. 1099-1101	Parliamentary .. 1103	
Executive Council .. 1108	Parliamentary Draftsmen .. 1112	
Finance and Trade—Treas. and Sec. .. 1100		
Fire Brigades .. 1003		

MONUMENTS & TOMBSTONES

In Marble, Granite, or Freestone.

Prices to Suit all Classes of Purchasers.

The
Best Variety
and
Largest Stock
in
Australia.

Prices—
From £5 to £300
each.

Send for Photos.
and
Designs.
Post Free
to
any part of the
Colonies.



Mural Tablets
for
Churches, Fonts,
&c.

TOMB RAILING
of
every description
at
Very Low Prices.

Inscriptions Cut
in
Cemeteries,
and
all kinds of
Repairs
Neatly Executed.

HANSON, LEWIS & Co.,

237 ELIZABETH STREET,

NEAR BATHURST STREET,

SYDNEY.

BRANCH WORKS AT ROOKWOOD.

STEPHENS' VIOLET-BLACK COPYING FLUID flows freely, and is superior in copying property and in colour to the French exportations.
BRILLIANT RED WRITING FLUID, by far the most permanent of existing Red Solutions, and particularly recommended for its beauty and durability.
TRES-NOIR, a combined non-corrosive Writing and Copying Ink, suitable for those wishing to use one Ink only.

Stephens' Inks

Have received
16 Highest
International Awards,
being, in each case,
the highest award
made.

Manufactured by
H. C. STEPHENS,
191, Aldersgate Street,
London,
and sold by the
principal Stationers
throughout the World.

PARTICULARLY ADAPTED FOR HOT AND DRY CLIMATES.

BLUE-BLACK WRITING FLUID, for its Beautiful Fluidity and Colour.
BLUE-BLACK COMBINED WRITING AND COPYING FLUID, yielding two sharp and clean copies, and specially adapted for those who wish to use one Ink only in the office.
BLUE-BLACK COPYING FLUID, for giving Four good Copies, and its remarkable Fluidity, Easy Flow, and Durability.
SCARLET INK FOR STEEL PENS, because Steel Pens left in this Ink for months do not impair the beauty of its colour nor are the Pens in the least corroded by it.

MONUMENTS & TOMBSTONES

In Marble, Granite, or Freestone.

Prices to Suit all Classes of Purchasers.

The
Best Variety
and
Largest Stock
in
Australia.

Prices—
From £5 to £300
each.

Send for Photos.
and
Designs.
Post Free
to
any part of the
Colonies.



Mural Tablets
for
Churches, Fountains,
&c.

TOMB RAILING
of
every description
at
Very Low Prices.

Inscriptions Cut
in
Cemeteries,
and
all kinds of
Repairs
Neatly Executed.

HANSON, LEWIS & Co.,

237 ELIZABETH STREET,

NEAR BATHURST STREET,

SYDNEY.

BRANCH WORKS AT ROOKWOOD.

STEPHENS' VIOLET-BLACK COPYING FLUID flows freely, and is superior in copying property and in colour to the French exportations.
BRILLIANT RED WRITING FLUID, by far the most permanent of existing Red Solutions, and particularly recommended for its beauty and durability.
TRES-NOIR, a combined non-corrosive Writing and Copying Ink, suitable for those wishing to use one Ink only.

Stephens' Inks

Have received
16 Highest
International Awards,
being, in each case,
the highest award
made.

Manufactured by
H. C. STEPHENS,
191, Aldersgate Street,
London,
and sold by the
principal Stationers
throughout the World.

PARTICULARLY ADAPTED FOR HOT AND DRY CLIMATES.

BLUE-BLACK WRITING FLUID, for its Beautiful Fluidity and Colour.
BLUE-BLACK COMBINED WRITING AND COPYING FLUID, yielding two sharp and clean copies, and specially adapted for those who wish to use one Ink only in the office.
BLUE-BLACK COPYING FLUID, for giving Four good Copies, and its remarkable Fluidity, Easy Flow, and Durability.
SCARLET INK FOR STEEL PENS, because Steel Pens left in this Ink for months do not impair the beauty of its colour nor are the Pens in the least corroded by it.

The Pacific Fire and Marine Insurance Co.,

SYDNEY.

CAPITAL - - - £1,000,000.

HEAD OFFICE: 85 PITT STREET.

DIRECTORS:

ALFRED C. GARRICK, Esq., *Chairman.*
LOUIS PHILLIPS, Esq. | Hon. G. THORNTON, Esq.
H. E. A. ALLAN, Esq. | R. F. POCKLEY, Esq.

LONDON BOARD:

EDWARD A. LEVY, Esq. | H. H. BEAUCHAMP, Esq.

MELBOURNE BOARD:

PHIPPS TURNBULL, Esq. | HASTINGS CUNNINGHAM, Esq. (Australasian Mortgage and Agency Company).
DAVID ELDER, Esq. (N. Z. Loan and M. Agency Company).

AGENCIES:

London—Messrs. EDWARD A. LEVY & Co. | Mauritius—Messrs. IRELAND, FRASER & Co.
Hongkong—Messrs. ADAMSON, BELL & Co. | Melbourne—WILLIAM STRACHAN.
Brisbane—Messrs. GIBBS, BRIGIT & Co. | Adelaide—J. G. BOOTHBY.
Newcastle—JOHN REID, Esq.

FIRE and MARINE RISKS accepted at Lowest Current Rates.

WOOL INSURED FROM SHEEP'S BACK TO LONDON.

MARINE POLICIES made payable in London, Mauritius, Hongkong, or at any of the Company's Agencies in the Australasian Colonies.

E. L. MONTEFIORE, Manager.

EDWARD CHAPMAN & CO.,

(Established 1854.)

BOND STREET, SYDNEY,

AND

8 GREAT WINCHESTER STREET, LONDON,

Merchants & Commission Agents.

SOLE AGENTS FOR—

The Merchants' Marine Insurance Company (Ltd.) of London.
The Netherlands-India Sea and Fire Insurance Company.
The National Marine Insurance Association (Ltd.) of London.
Wm. Ingham & Sons, Prize Medal Glazed Bricks, &c.
Craven, Dunnill & Co.'s Prize Medal Encaustic Tiles.

Indents Promptly Executed, and every kind of Agency Business undertaken.