

CONTENTS.

PAGE.

INDICES	v.-xxxvi
ALMANAC	xxxvii.-xxxix.
MUNICIPAL	xl.
CITY STREETS DIRECTORY	1-151
SUBURBAN DIRECTORY	153-630
COMMERCIAL OR ALPHABETICAL DIRECTORY	632-1076
PASTORAL	1077-1122
TRADES DIRECTORY	1123-1324
JUSTICES OF THE PEACE	1239-1244
EDUCATIONAL	1326-1330
ECCLESIASTICAL	1331-1333
EUROPEAN TRADES LIST	1334-1335
GOVERNMENTAL AND PARLIAMENTARY	1336-1351
CIVIL DEPARTMENTS	1338-1348
NAVAL AND MILITARY	1348-1351
TARIFF OF N.S.W. (CUSTOMS DUTIES)	1353
STAMP DUTIES	1354-1355
WHARFAGE AND TONNAGE RATES	1355-1357
FIRMS WITH FIXED PAY-DAYS	1359-1367
CENSUS	1368

GENERAL INDEX.

Aborigines' Protection Board	1343	Department of Prisons	1347	Land Appeal Court	1348
Agent-General for the Colony in England	1338	Diamond Drill Branch	1344	Lands—Claims to Grants of	1347
Agricultural Department	1344	Distilleries and Sugar Refineries	1341	Lands—Occupation of	1347
Alphabetical Directory	630-1076	District Court Judges	1340	Lands—Secretary for	1347
Art Gallery	1343	District Court	1340	Lands Titles Branch	1338
Assignees—Official	1208	District Registrars	1280	Law Institute	1347
Associates and Clerks of Arraigns	1340	Divorce and Matrimonial Causes Court	1340	Legal Directory—See Trades section for Barristers, Solicitors, Official Assignees, also Minister for Justice	
Associations	1120	Ecclesiastical	1381-1333	Legislative Assembly	1337
Asylums Department	1344	Educational	1320	Legislative Assembly—Officers of	1338
Attorney-General	1339	Electric Telegraphs	1348	Legislative Council	1336
Audit Department	1343	Engineers, Military	1348	Legislative Council—Officers of	1338
Australian Museum	1343	English and Continental Manufacturers	1334-1335	Libraries	1248
Bankruptcy Department	1340	Equity—Master in	1340	Lunacy Department	1339
Banks	1133	European Manufacturers	1334-1335	Lunatic Asylums—See Institutions	1220
Barracks and Ordnance Department	1349	Executive Council	1336	Magistrates—Stipendiary	1340
Barristers	1133	Finance and Trade—Treas. and Sec.	1341	Marine Board	1342
Barristers' Admission Board	1347	Fire Brigades	1340	Master in Equity	1340
Biloea gaol	1347	Firms' Pay-days	1350-1307	Matrimonial Causes Court	1346
Board of Health	1342	Fisheries Commission	1340	Medical Directory	1250
Board for opening tenders—Public works	1345	Fitzroy Dock	1344	Metropolitan Transit Commission	1351
Botanic Gardens	1340	Free Public Library	1343	Metropolitan Board of Water Supply and Sewerage	1345
British Ships of War on the Australian station	1349	Friendly Societies	1340	Metallurgical Branch	1344
Cadet Office	1343	Gaol, Darlinghurst	1347	Military Forces	1340
Cavalry—N.S.W. Regiment of	1349	General Post Office	1348	Mines—Secretary for	1343
Cemeteries	1158	Geological Survey	1344	Minister for Justice	1345
Census	1308	Governmental and Parliamentary	1336	Minister for Public Instruction	1343
Central Police Court	1346	Government Asylums	1339	Money Order and Savings Bank Department	1318
Certificated Conveyancers	1108	Government Printing Office	1341	Municipal—See commencement of City Streets and of respective Suburbs	
City Streets Directory	1-151	Government Savings Bank	1348	Museum	1343
Charitable Institutions of N.S.W.	1340	Government Statistician	1339	National Art Gallery	1343
Civil Departments	1338	Governors of the Australian Colonies	1351	Nautical Training-school Sobrón	1343
Civil Service Board	1339	Grants of Land—Claims to	1347	Naval Brigade	1348
Claims to Grants of Land	1347	HANSARD Parliamentary Report—ing Staff	1338	Naval Artillery Volunteers	1348
Clerks of Petty Sessions	1346	Harbours and Rivers Navigation	1344	Naval Department	1348
Clubs	1159	Hawkesbury Agricultural College	1344	Naval Force	1348
Coal Fields and Coal Mines	1344	Health Board	1342	Naval and Military	1348
Const Hospital	1342	Health and Medical Department	1342	N.S.W. Lancers	1340
Colleges	1326	Hospitals	1217	Notaries Public	1208
Colonial Defence Boats	1349	Imperial Government Establishments	133	Observatory	1348
Colonial Distilleries Inspector	1341	Imperial Pensions	1341	Occupation of Lands	1347
Chief Secretary	1338	Incorporated Law Institute	1347	Official Assignees	1268
Colonial Store Department	1344	Industrial School for Girls	1343	Officers of Legislative Council and Assembly	1338
Commissioners for Affidavits	1103	Infantry	1340	Ordnance Department	1348
Consuls	1160	Insolvency Court	1340	Parliamentary	1336
Conveyancers	1168	Inspector-General of Police	1333	Parliamentary Draughtsmen	1340
Copyright Registrar and Agents	1170	Institutes	1229	Parliamentary Library	1338
Coroner's Court	1340	Instruction, Public (Department)	1343	Parliamentary Reporting Staff—HANSARD	1338
Crown Prosecutors	1346	Justice—Minister for	1345	Pastoral Directory	1077-1122
Crown Solicitor	1346	Justices of Peace	1239	Patents and Trade-marks Office	1339
Curator's Depart. (Supreme Court)	1347	Labour Bureau	1343	Patent Agents	1272
Customs	1341	Land and Income Tax Department	1341	Pay Days	1359
Customs Duties	1303				
Darlinghurst Gaol	1347				
Deeds Branch—Registrar-General	1338				
Defence Department	1340				
Departments (Government)—See respective names					
Department of Agriculture	1344				

Permanent and Volunteer Military Forces	PAGE .. 1349	Secretary for Mines 1342	Technical Education 1343
Petty Sessions (Suburban) Clerks of	.. 1346	Secretary for Public Works 1344	Technological Museum 1343
Police Courts 1346	Sewerage Branch—Works 1346	Telegraph Department 1348
Police Inspector-General 1339	Shaftesbury Reformatory	.. 1340-3	Tender Board—Public Works	.. 1345
Postmaster-General 1348	Sheriff's Department 1346	Theatres—See Places of Amusement	1375
Prisons Department 1347	Shipping Masters 1342	Trade and Finance—Treasurer and Secretary 1341
Prothonotary 1340	Ships of War on Australian Station	1348	Trade Unions Registrar 1340
Public Instruction 1343	Sobraon Training Ship 1343	Trades Directory 1123-1324
Public Library 1343	Societies—Miscellaneous 1294	Tramways 1345
Public Watering Places 1344	Solicitors 1295	Transit Commissioners 1351
Public Works—Secretary for	.. 1344	Solicitors' Admission Board 1347	Treasurer and Secretary for Finance and Trade 1341
Public Service Board 1339	Spectacle Island 1347	Treasury 1341
Public Works—Board for Opening Tenders 1345	Stamp Duties Office 1342	Triangulation and General Survey of the Colony 1348
Railways 1345	Stamp Duties 1354	Trigonometrical Survey of the Colony 1348
Railway Branch—Works Department 1345	Stipendiary Magistrate 1346	Vice-Admiralty Court 1346
Regiment of Cavalry 1349	Stock and Brands Branch 1344	Volunteer Artillery 1348
Registrar of Copyrights 1339	Streets (City) Directory	.. 1-151	Water Police Court 1347
Registrar-General 1339	Submarine Miners 1350	Weights and Measures 1347
Rivers Navigation 1344	Suburban Clerks of Petty Sessions	1346	Wharfrage and Tonnage Rates	.. 1355
Royal Mint 1338	Suburban Directory 163-630	Works (Public) Department 1344
Savings Bank Department 1348	Sugar Refineries Department	.. 1341	Works—Board for Opening Tenders	1345
Secretary of Finance and Trade	.. 1341	Supreme Court 1347		
Secretary for Lands 1347	Surveyor, Chief, &c. 1347		
		Sydney District Court 1348		
		Sydney Mint 1358		
		Sydney Technical College	.. 1343		
		Tariff of N.S.W. 1353		
		Taxation Department 1341		

STREETS INDEX.

CITY AND SUBURBS.

	PAGE		PAGE		PAGE
Abattoirs, Glebe Island, Balmaln ..	196	Albert rd, Canterbury ..	255	Alfred st, Granville ..	312
Abattoirs rd ..	1	Albert rd, Homebush ..	576	Alfred st (Clark's Point), Ilm't's Hill ..	328
Abattoirs rd, Balmaln ..	196	Albert rd, Strathfield ..	570	Alfred st (Kebblewhite's Estate), ..	348
Arab st, Bankstown ..	228	Albert st (Pymont) ..	2	Leichhardt ..	348
Abbotsford rd, Homebush ..	576	Albert st (Phillip st) ..	2	Alfred st, Marrickville ..	374
Abbott rd (Artamon), Willoughby ..	608	Albert st, Balmaln ..	107	Alfred st, North Botany ..	427
Abbott st, Granville ..	313	Albert st, Botany ..	230	Alfred st, North Sydney ..	432
Abbott st, North Sydney ..	432	Albert st, Strathfield ..	235	Alfred st, St. Peters ..	569
Abbott st, Randwick ..	516	Albert st, Darlinghurst ..	2	Alfred st, Waverley ..	594
A Beckett st, Granville ..	313	Albert st, Erskineville ..	284	Alice st, Auburn ..	190
Abercorn st, Bexley ..	326	Albert st, Gladesville ..	561	Alice st, Balmaln ..	107
Abercrombie lane ..	1	Albert st, Glebe ..	201	Alice st, Drummoyn ..	272
Abercrombie place ..	1	Albert st, Granville ..	313	Alice st, Newtown ..	404
Abercrombie st, Redfern ..	527	Albert st, Leichhardt ..	348	Alice st, Parramatta ..	480
Abigail st, Hunter's Hill ..	321	Albert st, Marrickville ..	374	Alice st, Rockdale ..	548
Abigail st, Summer Hill ..	171	Albert st, Newtown ..	404	Allen's avenue, Marrickville ..	374
Aboukir st, Rockdale ..	548	Albert st, Paddington ..	457	Allen lane ..	3
Abuklea rd, Marsfield ..	395	Albert st, Parramatta ..	480	Allen's rd, North Ryde ..	504
Acton st, Burwood ..	235	Albert st, Petersham ..	493	Allen st ..	3
Ada st ..	1	Albert st (Guildford), Prospect and ..		Allen st, Concord ..	202
Ada st, Concord ..	262	Sherwood ..	510	Allen st, Canterbury ..	255
Ada lane, Erskineville ..	284	Albert st, Randwick ..	518	Allen st, Glebe ..	294
Ada st, Erskineville ..	284	Albert st, Redfern ..	528	Allen st, Granville ..	814
Ada st (Ontley), Kogarah ..	337	Albert st, Rookwood ..	559	Allen st, Leichhardt ..	348
Ada st, North Sydney ..	432	Albert st (now called Potts st), Ryde ..	564	Allen st, Waverley ..	593
Ada st, Parramatta ..	479	Albert st, Strathfield ..	235	Alleyne st, Willoughby ..	609
Ada Villars terrace, Erskineville ..	284	Albert st, St. Peters ..	569	Alison st, Randwick ..	510
Adderton rd, Dundas ..	276	Albert st (Tivoli Estate), St. Peters ..	569	Alma avenue, Marrickville ..	374
Adam st, Granville ..	313	Albert st, Waverley ..	593	Alma lane, Darlington ..	207
Adderley st, Auburn ..	190	Albert st, Chatswood ..	609	Alma rd, Marsfield ..	395
Adderley st, Rookwood ..	559	Albert st, Woollahra ..	617	Alma st east ..	4
Addiscombe Park, Manly ..	367	Alberta st ..	2	Alma st west ..	4
Addison st, Balmaln ..	197	Alberto st, Leichhardt ..	348	Alma st, Ashfield ..	171
Addison rd, Marrickville ..	373	Albion lane (Surry Hills) ..	2	Alma st, Darlington ..	267
Addison rd, Manly ..	367	Albion st ..	2	Alma st, Paddington ..	457
Adelaide lane (Surry Hills) ..	2	Albion st, Annandale ..	162	Alma st, Parramatta ..	480
Adelaide place ..	2	Albion st, Balmaln ..	197	Alma st, North Sydney ..	434
Adelaide st ..	2	Albion st, Leichhardt ..	348	Almora st, Mosman ..	397
Adelaide st, Woollahra ..	617	Albion st, Marrickville ..	374	Alpha rd, Willoughby ..	609
Adolphus lane, Balmaln ..	197	Albion st, Paddington ..	457	Alt st, Ashfield ..	171
Adolphus st, Balmaln ..	107	Albion st, Parramatta ..	480	Altou st, Woollahra ..	617
Adolphus st, Naremburn ..	608	Albion st, Randwick ..	516	Alviston st, Strathfield ..	577
Ady st, Hunter's Hill ..	321	Albion st, Waverley ..	593	Ambrose st, Hunter's Hill ..	322
Afonsa st, Auburn ..	190	Albyn st, Strathfield ..	577	Amelia st, North Botany ..	427
Agar st ..	2	Albyn st, Bexley ..	346	Amelia st, Waterloo ..	584
Agar st east ..	2	Alderson st, Redfern ..	528	Amhurst st, North Sydney ..	434
Agar st, Marrickville ..	374	Alderson st, Waterloo ..	584	Amos st (May's Hill), Prospect and ..	
Agincourt rd, Marsfield ..	395	Alexander lane ..	3	Sherwood ..	510
Agnes st, Strathfield ..	576	Alexander st (now called Andrew ..		Amy rd, Penkhurst ..	326
Aird st, Parramatta ..	479	st), Little Coogee ..	510	Amy st, Canterbury ..	255
Albany rd, Petersham ..	492	Alexander st ..	3	Amy st, Erskineville ..	284
Albany st, North Sydney ..	432	Alexander st, Alexandria ..	163	Amy st, Rookwood ..	559
Albany st, St. Leonards ..	608	Alexander st, Balmaln ..	197	Ancrum st, North Sydney ..	434
Albemarle st, Newtown ..	404	Alexander st, Hunter's Hill ..	321	Anderson st, Alexandria ..	153
Albert avenue, Chatswood ..	608	Alexander st, Paddington ..	457	Anderson st, Chatswood ..	609
Albert crescent, Croydon ..	235	Alexander st, North Sydney ..	432	Anderson st, Marrickville ..	374
Albert Grove, Ashfield ..	171	Alexander st, Willoughby ..	609	Andover st, Carlton ..	337
Albert lane, Leichhardt ..	348	Alfred rd, Forest Lodge ..	294	Andreas st, Petersham ..	493
Albert lane, Paddington ..	457	Alfred st (Bowman st) ..	3	Andrew st (Little Coogee) Randwick ..	516
Albert parade, Ashfield ..	171	Alfred st, Circular Quay ..	3	Angel rd, Burwood ..	23

Clerk in Charge of Lease Branch—W. H. Collis
Clerk in Charge of Correspondence—J. A. B. Fry
Relieving Officer and Warden—R. Mendis Gibson, J.P.
Clerk in charge of Records—W. H. Tuuhs
Inquiry Branch—F. H. C. Brownlow
Clerks—H. D. Wood, B.A., L.L.B. (Syd.), R. G. Allman, E. A. H. Stephen, W. E. O'Brien, S. T. Burcher, F. H. C. Brownlow, John Campbell, A. H. Ferris, J. F. E. Ormiston, H. Parr, F. S. Mance, A. S. Walker, S. Ellis, A. Taylor, J. L. Dunne, W. B. Rigg, Ewing Goodman, W. Patrick Geary, S. W. O'Connor, A. M. Browne, E. G. Broughton, F. Little, G. P. Lush, H. R. Ormiston, J. D. Smith, M. O'Keefe, J. H. Ormiston, E. A. O. Wainwright, O. U. Nickless, G. James, J. A. Quinlan, W. J. Little, H. A. Earle, J. J. Watson, J. T. McKern, G. D. Ross, H. W. Gollidge; E. Walsh, chief messenger
Chief Draughtsman—G. A. McKay
Examiner—J. H. Mayes
Draughtsman—E. P. Bishop, H. A. James, S. A. Lee, J. T. Smiles, W. Martin, E. R. Connor, M. F. McDonald, W. S. Gray, G. A. Taylor, G. Oom, S. C. Burnell, E. S. Sawtell, J. J. Finn, W. Metcalf
Clerks—J. F. Dalrymple, J. J. Clarke
Plan Mounter—S. Bowles
Mining Surveyors—J. T. Gray, J. Thomas, R. H. Cambage, E. Thomas, E. G. Sewell
Chief Inspector of Mines, Superintendent of Drills and Warden—W. H. J. Slee, J.P., F.G.S.
Inspectors of Mines—David Milne, James Hebbard, J. R. Godfrey, B.A. (Cantab.), H. Hooke, J. Polkinghorne, and J. Carthow
Clerk to Prospecting Board—D. McCulloch

PUBLIC WATERING PLACES AND ARTESIAN BORING BRANCH.

Office—Department of Mines and Agriculture.
Superintendent of Public Watering Places and Artesian Boring.—James W. Boulton, J.P.
Chief Inspector—John Low
Inspectors—P. J. Makinson, W. Donaldson, O. C. Macdonald, A. Bruce Sutor, and P. F. Wood
Clerks—R. W. George, T. H. Sapsford, and W. J. O'Connor
Engineering Draughtsman—H. Brown
Field Assistants—H. Creer, E. H. Tebbutt

GEOLOGICAL SURVEY.

Lands Office. Museum—The Domain.
Government Geologist—E. F. Pittman, A.R.S.M.
Geological Surveyor—J. E. Carne, F.G.S.
Geological Surveyors—J. B. Jaquet, A.R.S.M., F.G.S.; J. A. Watt, M.A., B.Sc.
Honorary Palaeontologist—R. Etheridge, jun.
Assistant Palaeontologist and Librarian—W. S. Dun
Curator and Mineralogist—G. W. Card, A.R.S.M., F.G.S.
Assayer and Analyst—J. C. H. Mingaye, F.O.S.
Assistant Assayers and Analysts—H. P. White, F.O.S., A. J. Nelson, A. Osborn, R. Vale, A. Greig
Curator's Assistants—L. F. Harper, M. Morrison, J. E. Dobson
Collector—Charles Cullen
Field Assistants—E. C. Whittell, H. J. Lindeman

COAL FIELDS AND COAL MINES.

Offices—Mines Department, Bridge street.
Chief Inspector of Coal Mines—A. A. Atkinson
Inspectors of Collieries—J. Dixon, J. Rowan, T. L. Bates and Wm. Humble
Clerk and Officekeeper—H. Winchester

MANAGERS EXAMINATION BOARD (Coal Mines Regulation Act).

Office—Department of Mines.
Secretary—H. D. Wood, B.A., LL.B.

GOVERNMENT AMBULANCE CORPS.

Office—Department of Mines.
Secretary—H. D. Wood, B.A., LL.B.

METALLURGICAL BRANCH.

Metallurgical Works—Clyde.
Government Metallurgist—
Assayer and Analyst—J. C. H. Mingaye, F.O.S., M.A.I.M.E.
Assistant Analyst—H. P. White
Assistant Assayers—A. J. Neilson, R. Vale

STOCK AND BRANDS BRANCH.

Chief Inspector of Stock and Registrar of Brands—Alexander Bruce
Metropolitan Inspector of Stock—R. D. Jones
Assistant Inspector of Stock—F. Shawe
Clerk in Charge—P. J. Byrne (acting)
Clerks—W. Patchett, P. J. Byrne, Geo. Yeo, A. Sedgwick, R. W. Johnston, W. J. Treasure, L. Guy, C. F. Emmett

DIAMOND DRILL BRANCH.

Mines Office
Chief Inspector of Mines—W. H. J. Slee, J.P., F.G.S.
Clerk—J. S. O'Neill
Storekeeper and Assistant Engineer—J. S. Leigh

DEPARTMENT OF AGRICULTURE.

Lands Office Buildings.
Chief Clerk—A. Salway
Chief Inspector—W. S. Campbell, F.L.S.
First Clerk—W. Precy
Pathologist—N. A. Cobb, B.Sc., Ph. D.
Chemist—F. B. Guthrie, F.O.S.
Entomologist—W. W. Froggatt
Consulting Botanist—J. H. Malden, F.L.S., &c.
Artist—E. M. Grosse
Travelling Instructor—J. L. Thompson
Wheat Experimentalist—W. Farrer

HAWKESBURY AGRICULTURAL COLLEGE, Richmond.

Principal—G. Valder
Science Master—E. C. Wood, M.A., B.Sc., B.E. (Syd.)
English Master, C. F. Musson, F.L.S.

MURRUMBIDGE EXPERIMENTAL FARM AND ORCHARD, Wagga Wagga.

Manager—G. McKeown

BATHURST EXPERIMENTAL FARM.

Manager—A. A. Dunnelliff

WOLLONGBAR EXPERIMENTAL STATION.

Officer in Charge—H. V. Jackson

SECRETARY FOR PUBLIC WORKS

And the branches under his supervision and control.
Harbours and Rivers; Government Architect; Roads and Bridges and Sewerage; Railway Construction; Land Valuation; Metropolitan Board of Water Supply and Sewerage; and Hunter District Water Supply and Sewerage Board

PUBLIC WORKS.

Phillip street.
Secretary for Public Works—Hon. Edward William O'Sullivan
Under Secretary and Commissioner for Roads—H. R. P. Hickson, M. Inst. O.E.
Engineer-in-Chief for Public Works—C. W. Darley, M. Inst. O.E.
Engineer-in-Chief for Railway Construction—H. Deane, M. Inst. O.E.
Government Architect—W. L. Vernon, F.R.I.B.A.
Land Valuer—E. J. Stevers

Principal Assistant Engineers—W. J. Hanna, H. R. Carleton, H. G. McKinney, C. O. Burge, J. Fischer
Engineer-in-Chief for Sewerage Construction—J. Davis
Principal Assistant Architect—G. McRae
First-class Assistant Engineers—W. A. Smith, A. W. Stillwell, Percy Scarr, R. E. Jones, T. W. Keele, H. D. Walsh, J. W. Grimshaw, W. D. Houlson, E. M. de Burgh, E. M. Allman, J. S. Mollison, W. J. Millner, P. Allen, L. A. B. Wade, T. Pridham, W. Russbach, S. H. Weedan, A. E. Cutler, W. Hutchinson, T. H. Small, C. McD. Stuart, J. M. Stawell
Surveyor—G. H. Halligan
Assistant Architects—T. Brindley, E. Drew, A. S. Cook, C. A. Harding, W. B. Simpson, T. Barnet, A. J. Pridue, J. S. Adam
Naval Architect—J. Orr
Chief Draughtsmen—H. Barker, J. G. Oakshott, G. J. Beckett, J. Marshall, A. L. Lloyd
Superintendent of Dredges—A. B. Portus
Superintendent Fitzroy Dock—E. J. H. Broad
Accountant—T. R. Steel
Chief Clerk—John Portus
Clerk in Charge of Correspondence and Records—W. Selkirk
Clerk in Charge of Bonds and Contracts—H. F. Norrie
Officer in Charge of Statistics, &c.—Samuel Steel
Paymaster—Owen Carroll
Assistant Accountant—James Conley
Examiner—J. Forsythe

PUBLIC WORKS TENDER BOARD.

Secretary for Public Works—President
Under Secretary for Public Works and Commissioner for Roads—Vice President
The Engineer-in-Chief for Public Works
The Engineer-in-Chief for Railways
The Government Architect
Engineer-in-Chief for Sewerage Construction
Secretary—W. F. Mitchell

RAILWAYS AND TRAMWAYS.

Chief Commissioner—Charles Oliver, J.P.
Commissioners—William M. Fehon, J.P., David Kirkcaldie, J.P.
Secretary to the Railway Commissioners—Hugh McLachlan
Solicitor to the Railway Commissioners—James O. Thom
Medical Officer—Dr. Woodward

Chief Accountant's Branch (Bridge st).

Chief Accountant—Thomas Hall

Traffic Auditor's Branch (Redfern).

Traffic Auditor—William R. Row

Stores Branch (Eveleigh).
Comptroller of Stores—Alexander Richardson

Traffic Branch.

Chief Traffic Manager—John Harper (Bridge st)
Out-door Superintendents—(Metrop., South and South Coast), John Parry (Redfern) and (North and West) Harry Richardson (Redfern)
Goods Manager—J. G. S. Corns (Redfern)
Station Master—Arthur Willis (Redfern)
Station Master—Charles Paull (Darling Harbour)

Permanent Way Branch.

Engineer-in-Chief for Existing Lines—Thomas R. Firth (Bridge street); James Fraser, Assistant Engineer-in-Chief

Locomotive Branch.

Chief Mechanical Engineer—William Thow (Eveleigh)
General Works Manager—H. B. Howe (Eveleigh)
Out-Door Locomotive Superintendents—E. A. Loughrey and C. H. Stanger (Eveleigh)

Electrical Branch.

Acting Electrical Engineer—O. W. Brain (Phillip st)

Signal and Interlocking Branch.

Interlocking Engineer—Charles Wilkin (Redfern)

Estate and Property Branch.

Estate and Property Agent—John Murray (Phillip st)

Traffic Branch (Tramways).

Tramway Manager—James Roberts (Bridge st)
Tramway Superintendent—John Kneeshaw (Bridge st)
Ocean Street Cable Tramway Officer—H. F. Brown (Rush-cutter's Bay)

Locomotive Branch (Tramways).

Locomotive Superintendent—George Downe (Randwick)

Permanent Way Branch (Tramways).

Maintenance Engineer—George Cowdery (Phillip st)

METROPOLITAN BOARD OF WATER SUPPLY AND SEWERAGE.

THE BOARD AND OFFICERS.

Offices—Corner of Pitt and Wilmott sts, Sydney.

Board Days—Tuesdays at 2.30 p.m.

Telephones—Head Office, 838, 1124; Crown st, 580.

President—Hon. Jacob Garrard
Vice-President—Ald. John Taylor. Government Members—J. Macpherson, J.P., G. Allen Mansfield, F.R.I.B.A. City Members—Ald. John Taylor, Ald. H. Chapman. Suburban Members—Ald. David Davis, Ald. J. Ahearn
Secretary and Chief Clerk—William Holmes
Solicitor—H. S. Williams, 39 Castlereagh st
Auditor and Examiner of Accounts—T. Kennedy
Comptroller of Stores and Paymaster—A. W. E. Flint
Accountant—Melbourne Green
Assessor—T. Rosey
Engineer—J. M. Small, M. Inst. C.E. Assistants—C. W. Smith (water), T. Griffiths (sewerage)
Hours for Receiving Rates—9 a.m. to 3 p.m.; Saturdays, 9 a.m. to 12; other business, between 9 a.m. and 4.30 p.m. The Engineer's office is open to the public from 9 a.m. till 1 p.m. Plumbers' applications must be made between 9 a.m. and 1 p.m.

MINISTER FOR JUSTICE

And the Departments under his supervision and control.

The Minister for Justice is charged with the business relating to the Supreme Court, Equity, Bankruptcy, District Courts, Sheriffs and Probate and Intestate Estate Departments; the Registrar-General's Department, the Courts of Petty Sessions; the Police Magistrates, Clerks of Petty Sessions, and Registrars of District Courts, the Coroners; Gnols and Penal Establishments (exclusive of Industrial or Reformatory Schools; all matters relating to the commutation or remission of sentences, or of fines or estates; Patents (Letters of Registration); Copyright Registry; Sydney and Suburban Cemeteries, including the Necropolis; Exhumation for the purpose of re-interment; Control of Court Houses; Weights and Measures (except the custody of the standards); Administration of the Newspaper Acts; "Liquor Act, 1898"; Companies Act, Real Property Act, Registration of Births, Deaths and Marriages Act, Cemeteries Act, Weights and Measures Act, etc., etc.

Office, Macquarie st.

Minister of Justice—Hon. W. H. Wood, M.L.A.

Under Secretary—George Miller, J.P.

Chief Clerk—J. L. Williams, B.A.

Clerk in Charge of Correspondence and Records—G. Whitfield
Clerks—E. W. Fegan, J. W. Brassington, C. D. Rainsford, A. S. Jones, C. T. Norton, H. J. Forster, W. J. Kessell, S. H. Harpur, R. R. Wisdom, N. Byrne, C. F. Nathan, W. C. O'Reilly and J. S. Creagh

Accountant—W. Husband
Account Clerks—W. A. Thomson, B. W. Bamford, F. Rand, G. W. Bleier, and E. H. Stoney, B.A.

Chief Emergency Officer and Inspector of Petty Sessions

Offices—S. Murphy, P.M.

Relieving Police Magistrate—T. C. K. McKell.

Relieving Clerks of Petty Sessions—H. H. Connell, D. R. Jamieson, C. C. Vindin, A. Gates and J. B. Gilson, (assistant)

Head Messenger—P. O'Neill

Housekeeper—Mrs. Chestnut

SUPREME COURT.

King at East.

Chief Justice—The Honorable Sir Frederick Darley, K.C.M.G.
 Puisne Judges—The Honorable Matthew Henry Stephen,
 William Owen, G. B. Simpson, H. E. Cohen, A. H. Simpson,
 W. Gregory Walker
 Chief Judge in Equity—The Honorable A. H. Simpson
 Judge in Divorce and Matrimonial Causes—The Honorable G.
 B. Simpson
 Judge in Bankruptcy—The Honorable W. Gregory Walker

ASSOCIATES AND CLERKS OF ARRAIGNS.

Clerk to Chief Justice—H. S. Darley
 Clerk to Mr. Justice Stephen—O. A. White
 Clerk to Mr. Justice Owen—E. R. Garnsey
 Clerk to Mr. Justice Simpson—O. E. Wiegall
 Clerk to Mr. Justice Cohen—W. M. Allen
 Clerk to Mr. Justice Simpson—H. H. L. Innes
 Clerk to Mr. Justice Walker—H. I. Pilcher

PROTHONOTARY.

Prothonotary—Charles Richard Walsh
 Chief Clerk—Arthur G. Saddington

DIVORCE AND MATRIMONIAL CAUSES COURT.

Registrar—C. R. Walsh
 Deputy—Arthur G. Saddington
 Chief Clerk—J. G. Leary

VICE-ADMIRALTY COURT.

Judge Commissioner—The Honorable Sir Frederick Darley,
 K.O.M.G.
 Deputy Judge—The Honorable William Owen
 Registrar—C. R. Walsh
 Deputy-Registrar—A. G. Saddington
 Marshal—John Martin
 Deputy-Marshal—S. W. Spain
 (See V.A. Courts Amendment Act of 1867.)

MASTER IN EQUITY'S DEPARTMENT.

Master-in-Equity—Henry Francis Barton
 Deputy Registrar—W. H. Hargraves
 Chief Clerk—W. A. Balcombe

BANKRUPTCY COURT.

Registrar—Arthur Henry
 Chief Clerk—

ATTORNEY-GENERAL'S DEPARTMENT.

Attorney-General—The Hon. B. R. Wise, Q.O., M.L.A.
 Secretary—Hugh Pollock, Barrister-at-Law
 Clerk—Herbert F. Morris

CROWN SOLICITOR'S DEPARTMENT.

Crown Solicitor—George Colquhoun
 Chief Clerk—O. E. Parkinson

CRIMINAL LAW BRANCH.

Clerk of the Peace—W. R. Beaver
 Prosecuting Officer—J. V. Tillett

CROWN PROSECUTORS.

Central Criminal Court—O. G. Wade
 Sydney—W. L. Merewether
 Metropolitan, Suburban and Hunter District—A. F. Dawson
 Southern District—J. Armstrong
 South-Western District—H. Harris
 Western District—J. H. P. Murray
 Northern District—R. J. Browning
 North-Western District—W. Bevan

DEPARTMENT OF JUSTICE—SHERIFF'S DEPARTMENT

Sheriff—C. E. B. Maybury
 Under Sheriff and Chief Clerk—S. L. Guy
 Clerk—John M. Wiltshire
 Accountant—W. Crookford
 Clerks—O. C. Watson, L. T. Pooley, P. H. Monday, T. Thompson,
 H. Lester
 Sydney—Chief Sheriff's Officer—J. B. Spence

Sheriff's Officers—

G. S. Challis T. Morse L. B. Lane
 M. E. H. Felton C. E. Dransfield P. Becker

Albury—R. C. Riley Inv. rell—C. Egan
 Armidale—J. A. O'Flaherty Kempsey—S. Jay
 Bathurst—O. F. Duchatel Lismore—J. Ricketta
 Bega—P. J. Cusack Moree—G. O. Shaw
 Bingera—W. E. Wearne Mudgee—R. M. Hunter
 Bombala—E. W. Jones Murrumbidgee—H. Brook
 Bourke—S. W. Fryer Narrabri—J. Russell
 Braidwood—G. F. Taylor Narrandera—H. G. W. Meghink.
 Broken Hill—Henry McVeagh Newcastle—W. S. Collins
 Burrowa—T. G. Cook Maitland—H. A. Gough
 Campbelltown—L. Spooner Orange—C. J. Barnes
 Cobar—E. Leary Parramatta—J. Bowers
 Cooma—A. Steel Port Macquarie—S. Jay
 Coonamble—O. H. Whiting Queanbeyan—E. C. Hineksman
 Cootamundra—J. J. Purcell Singleton—H. Pfeiffer
 Coonabarabran—J. Macquaire Taree—O. H. Wright
 Cowra—J. Muir Tamworth—W. O. Idriss
 Deniliquin—S. E. Tapner Tentfield—J. L. King
 Dubbo—J. T. Steel Wagga Wagga—P. Kinsella
 Forbes—S. W. Daniel Walgett—J. A. Macnamara
 Glen Innes—J. H. Powell Wellington—J. Clements
 Goulburn—K. M. Wray Wentworth—J. W. Thorn
 Grafton—A. S. Meares Wilcannia—E. H. Hunt
 Grenfell—W. Hazelton Windsor—F. W. Linsley
 Gundagai—J. J. Kelly Wollongong—E. H. Boys
 Gunnedah—P. A. O'Neill Wyalong—H. Gardner
 Hay—F. I. Fisher Yass—A. F. Lloyd
 Hillston—E. Brissenden Young—F. J. Clancy

DISTRICT COURT JUDGES AND CHAIRMEN OF QUARTER SESSIONS.

Metropolitan, Suburban, and Hunter District—C. E. R. Murray
 and A. P. Backhouse
 Southern District—G. H. Fitzhardinge
 South Western District—F. E. Rogers, Q.C.
 Western District—Ernest Brougham Docker
 Northern District—
 North Western District—Frederick William Gibson
 (The several District Court Judges are also Chairmen of the
 Courts of Quarter Sessions within their respective districts.)

SYDNEY DISTRICT COURT.

Chancery square.

Registrar—J. M. A. Bonthorne
 Chief Clerk—F. E. Crook
 Chief Bailiff—Samuel Withers

CORONER'S COURT.

Chancery square, King at

City Coroner—J. C. Moore, J.P.
 Chief Clerk—Leslie Hullfick
 Deputy City Coroner—R. H. Todd, J.P.

METROPOLITAN POLICE DISTRICT.

PETTY SESSIONS.

Stipendiary Magistrates—O. Delohery, G. H. Smithers, F. W.
 Edwards, F. S. Isaacs, E. H. Wiltshire, James Mair
 Member of the Licensing Court—Frederick Penny

CENTRAL POLICE COURT.

Liverpool st, near George st.

Stipendiary Magistrates—Cornelius Delohery, F. S. Isaacs,
 F. W. Edwards, G. H. Smithers, E. H. Wiltshire, J. Mair

Clerk of Petty Sessions and Chamber Magistrate—M. S.
 Love, J.P.
 Chief Clerk—O. A. H. Redgrave, J.P.
 First Clerk—M. Macfarlane
 Clerks—H. F. Roberts, W. J. Campbell, J. S. Doison, C. R. Colls,
 G. Dunckeur, C. Coghlan, C. E. Foster, A. D. Roberts, S.
 Hawthorne, H. H. Farrington
 Chief Bailiff Small Debts Court—John Palmer
 Government Interpreter and Translator of Foreign Languages
 —Geo. Jarrett

WATER POLICE COURT.

Albert and Phillip sts.

Clerk of Petty Sessions and Chamber Magistrate—W. M.
 Macfarlane, P.M.
 Chief Clerk and Accountant—C. Jennings, J.P.
 Clerks—W. J. M. Fincham, G. H. Beaumont, R. W. Robberds,
 S. B. Gunn, F. G. Doyle, P. J. Kierman, M. B. O'Connor,
 D. F. Parker
 Bailiff Small Debts Court—J. M. Cashman
 Messenger—Edwin Tindall

SUBURBAN CLERKS OF PETTY SESSIONS AND CHAMBER MAGISTRATES.

Newtown—Frederick P. Mears, J.P.
 Redfern—William Carson, J.P.
 Balmain—Geo. M. Marsh, J.P.
 Glebe—G. A. Lloyd, J.P.
 North Sydney—Arthur Blix, J.P.
 Paddington—F. W. C. Crane, J.P.

WATER POLICE STATION.

Inspector in Charge—George H. Hyem

DEPARTMENT OF PRISONS.

Office—Elizabeth st.

Comptroller-General—F. W. Neitenstein, J.P.
 Deputy Comptroller—S. McCauley, J.P.
 Inspector of Prisons—S. McCauley, J.P.
 First Clerk—F. J. Willard
 Accountant and Statist—G. F. Windin
 Clerks—S. S. Russell, P. T. Smith, I. I. Moss, P. Sheridan,
 A. S. Wickham, and V. L. Coltrington
 Messenger—John Garrard

DARLINGHURST GAOL.

Forbes st, Darlinghurst.

Governor—W. H. Collis
 Deputy-Governor—O. Rowley
 Chief Warder—T. Blake
 Principal Female Warder—Bridget O'Connell
 Chaplains—Church of England, Rev. Canon Chas. H. Rich;
 Roman Catholic, Rev. Father E. O'Brien; Presbyterian,
 Rev. W. MacKenzie; Wesleyan, Rev. George Turner;
 Jewish, Rev. Philipstein
 Chief Clerk—D. G. Darcy
 Second Clerk—P. T. R. Trotter
 Schoolmaster—W. McCready
 Storekeeper—A. F. Primrose
 Director of Labour—W. Urquhart
 Clerk—J. McGillon
 Clerk—J. Charles Turner
 Dispenser—G. F. C. Cunningham
 Medical Officers—R. T. Paton, G. H. Taylor

BILLOELA GAOL.

Cockatoo Island.

Governor—Thomas J. Barnett
 Deputy-Governor—Edward Pynor
 Superintendent Female Division—Kate J. Bridgland
 Clerk—Evan W. Howell
 C. of E. Chaplain—W. A. Charlton
 R. C. Chaplain—J. P. Moynagh
 Visiting Surgeon—C. W. Carruthers
 Dispenser—S. H. Hinder

Senior Warder—David Ahern
 1st Class Warder—William A. Kneeshaw, John Bilsdon
 2nd Class Warder—David Owen

SPECTACLE ISLAND.

Imperial Naval Ordnance Depot and Magazine—H. D. Capper,
 gunner, R.N., in charge Naval Ordnance Depot; Lieut.
 H. G. Grenfell, R.N., Inspector of Warlike Stores; W.
 Simpson, storeholder; W. Hastie, clerk; W. R. Crane, fore-
 man; S. Halse, armourer; G. Bradley, writer

WEIGHTS AND MEASURES.

Office—Central Police Court yard, Liverpool st.

Metropolitan Inspector of Weights and Measures, and Inspec-
 tor of Weights and Measures under the Coal Mines
 Regulations Act of 1890—James W. Evans. Office hours,
 9.30 to 11 a.m., except Saturdays; Fridays, 3.30 to 4.30
 p.m. Material received or delivered from 0 till 4.30 p.m.;
 Saturdays till 12 noon. Vehicles must enter by Union lane,
 off 612 George st, or 359 Pitt st. Tel. 1028

INCORPORATED LAW INSTITUTE.

Office—2 Castlereagh st.

President—W. H. Pigott, M.L.C.
 Vice-Presidents—H. M. Makinson; Fred Curtis
 Council—George J. Sly, H. P. Steel, A. R. Minter, L. F. Dixon,
 H. C. E. Rich, L. Gibson, O. A. Laurence, M. E. A. Beckett,
 W. Andrews, E. A. Smith, F. D. Kent
 Hon. Treasurer—F. Osborne
 Secretary—J. P. Creed
 Auditors—J. Howarth and G. W. Ash

BARRISTERS' ADMISSION BOARD.

Their Honors the Judges, the Attorney-General, and others
 elected by members of the Bar annually
 Secretary—A. G. Saddington
 Assistant secretary—L. M. Addison
 Examiners—
 In Law and Equity—Professor Cobbett, G. E. Rich, and
 F. J. Bethune
 In Roman Constitutional and International Law—Professor
 Cobbett
 In Classics—Professor Butler and Professor Scott
 In Geometry and Algebra—Professor Gurney
 In French Language and Literature—Professor MacCallum
 In Logic—Professor Anderson
 In History—Professor Woolf

SOLICITORS' ADMISSION BOARD.

President—Professor Cobbett
 Barristers—H. M. Hamilton and P. W. Street
 Solicitors—A. E. Jaques, E. G. Dawes, A. W. Nathan, and F. B.
 Wilkinson
 Secretary—A. G. Saddington
 Assistant Secretary—L. M. Addison

CLAIMS TO GRANTS OF LAND.

(Commissioners under 5 Wm. IV., No. 21.)

Commissioners—William Hattam Wilkinson (Chairman),
 Theodore Powell, J.P., and Charles Edwin Parkinson
 Secretary—Frederick McKern

SECRETARY FOR LANDS

And the Departments under his supervision and control.

Offices—Bridge street.

Lands; Survey of Lands; Agents for the sale of Crown
 Lands; Court of Claims
 Secretary for Lands—Hon. T. H. Halse
 Under Secretary—W. Houston
 Chief Clerk—F. H. Wilson
 Chief Inspector—H. A. G. Curry

Inspectors L. Bils and D.S. Offices—O. J. Saunders and J. Burt
Inspector Land Agents Offices—G. H. Gibson
Accountant—V. Cohen
Sub-Accountant—R. Baldwin (acting)
Clerk in Charge—R. H. De Low, B. Division (Leases)
Clerk in Charge—W. H. Capper, A. Division (Sales)
Cumberland Ranger—James McKeown
Information Bureau—Draughtsman in charge, G. H. S. King

Survey Staff.

Chief Surveyor and Director of Trigonometrical Survey Staff—
E. Twynan
District Surveyors—J. W. Allworth, H. A. Crouch, T. H.
Smith, G. H. Sheaffe, W. Orr, F. Poate, W. H. O.
M. Wool, A. Sharp, W. G. Walker, T. W. Conolly, D. M.
Maitland, E. Ebsworth
Surveyors—C. W. Laine, E. J. Halliday, M. Barlow, E. J.
Coberoff, O. Thurburn, A. W. Chapman, R. B. Mackenzie,
V. B. Riley, H. Hogarth, C. R. Scrivener, S. E. Perdriau,
W. N. Sendall, H. F. Madsen, J. O. Burgess, G.
Pennfather, J. Broughton, A. H. Chesterman, W. H.
Nalder, F. J. E. Bootle, H. W. Graeme, S. R. Bently, R.
J. A. Roberts, R. N. Somerville, S. A. Steane, H. P. Hall,
J. F. Truscott, H. Welchman, W. M. Thomas, T. B. U.
Sloman, G. H. Legge, T. Ranken, A. E. Roberts, J. Lindsay,
E. W. Ellis

Chief Draughtsman—C. E. Rennie
Draughtsmen in Charge Local Offices—J. J. O. Callachor, T.
Elwin, S. L. Peyton, A. R. Gall, A. J. Hare, J. T. Small,
M. A. McLean, R. Shelton, P. J. Dowling, J. Ferris, J.
G. R. Fewings, O. W. L. Ballhausen, H. E. Wilkinson

Compiling Branch.

Draughtsmen-in-Charge—E. S. Vanit and O. Ireland
Chief Lithographer—J. B. Cobham

Roads Branch.

Chief Draughtsman—A. J. Stopps

Plans, Sales and Records.

Clerk in Charge—R. Oatley

TRIGONOMETRICAL SURVEY OF THE COLONY.

Surveyor in charge Field Operations—J. Brooks
Observing Surveyor—F. J. Gregson
Chief Computer—T. F. Furber

Forestry Branch.

Senior Clerk—R. D. Hay
Inspecting Forester—J. S. Cheesbrough

LAND APPEAL COURT.

Office—Court House, Darlinghurst

President, Alexander Oliver, M.A.; Commissioners: Stephen
Freeman, Christopher Brandis; Registrar, J. T. Keating.

POSTMASTER-GENERAL

And the Departments under his supervision and control.

Post Office, Money Order Office, and Government Savings
Bank; Electric Telegraphs

GENERAL POST OFFICE.

Postmaster-General—Hon. W. P. O'rick, M.P.
Deputy Postmaster-General—S. H. Lambton
Secretary—James Dalgarno
Chief Electrician and Engineer-in-Chief of Telegraphs—P. B.
Walker
Chief Accountant and Controller, Money Order Office and
Government Savings Bank—A. J. Doak
Chief Inspector and Superintendent of the Mail Branch—W. J.
Davies
Accountant—C. S. Gregory
Distributor of Stamps—John Thompson
Cashier—D. C. Coote
Assistant Superintendent and Senior Inspector—G. P. Unwin
Inspectors—L. B. Bossley, A. Burnett, E. J. Young, W. H.
Maguire, E. W. Bramble, F. P. Brewer, W. H. Golding

Inland Mail Clerk—J. Clarke
Appointment Clerk—A. J. Arndell
Correspondence Clerk—J. S. Richardson
Record Clerk—G. McGibbon
Inspector for Irregularity and Missing and Dead Letter Branch—
H. L. Russell

Money Order and Government Savings Bank Branch.

Accountant—Arthur R. Docker
Examiner—W. A. Uhr
Teller—E. Lloyd
Office open from 9.30 a.m. till 3.30 p.m. daily; Saturdays, till noon

Electric Telegraph Branch.

Manager—William Wilson; assistant managers, C. J. Murphy
and H. J. Sykes
Electrician—J. Y. Nelson
Clerk in charge Check Branch—H. C. Usher
Receiving Clerk—F. W. Hulme
Telephone Manager—S. J. Watson
Line Inspector—R. Rutherford
Chief Engineer Electric Light Branch—James S. Fitzmaurice

NAVAL AND MILITARY.

NAVAL DEPARTMENT.

Officer Commanding Australian Station—Rear-Admiral
Hugo L. Pearson
Staff of Rear-Admiral Pearson—Secretary, J. Ferguson; Flag
Lieutenant, A. C. Stewart
ROYAL NAVAL YARD—Sydney, Captain in charge, H. W.
S. Gibson
*Inspector of Machinery—W. Olive, R.N.
Inspector of Warlike Stores—H. G. Gromphell, R.N.
*Engineer of Yard—W. F. Hinchcliff
Secretary to Captain in Charge—Assistant Paymaster W. D.
Sarratt, R.N.
Naval Store Officer—G. S. Ashdown
Victualling Store Officer—Wm. Hogarth
Assistant Naval Store Officer—B. J. Wilson
Carpenter—W. H. Newham
* Will probably be relieved before end of year

SHIPS OF WAR ON THE AUSTRALIAN STATION.

ROYAL ARTHUR (Flag)—13 guns, 7700 tons, 12,000 h.p.
Captain—O. G. Dicken
Commander—B. S. Curry
Lieutenants—Lucy, Bernard, Hall, Kelly, Brine
Major Marines—F. G. Cotter
Chaplain—Rev. H. S. Fitzroy
Fleet Surgeon—A. Patterson
Fleet Paymaster—W. B. Boxar
Fleet Engineer—G. F. Laird
PYLADES—12 guns, 1420 tons, 1510 h.p.
Captain—R. G. O. Tupper
Lieutenants—Watson, Truscott, Kiddle
Staff Surgeon—W. G. Axford
Engineer—C. J. Huddy
Paymaster—T. T. Lanyon
TORCH—6 guns, 900 tons, 1100 h.p.
Captain—Henry Freedy
Lieutenants—J. R. Ward, H. Williams, H. Heathcote
Paymaster—H. N. Dymott
Engineer—A. E. Straw
LIZARD—6 guns, 805 tons, 1200 h.p.
Lieutenant and Commander—J. C. Watson
Sub-Lieutenant—Seymour, Coates
Surgeon—S. Cronen
MOHAWK—6 guns, 1770 tons, 3500 h.p.
Commander—F. H. P. W. Freeman
Lieutenants—Farrington, Scott, Roberts
Staff Surgeon—J. Moore
Paymaster—O. E. F. Webb
Engineer—L. E. Thumwood
PORPOISE—6 guns, 1770 tons, 3500 h.p.
Commander—A. H. Ravenhill
Lieutenants—Parker, Gaunt
Staff Surgeon—J. Andrews
Paymaster—E. W. Keay
Chief Engineer—A. E. Tomkins

SURVEYING SHIPS.

PENGUIN—2 guns, 1130 tons, 1110 h.p.
Captain—A. Mostyn Field
Lieutenants—Nares, Lewis, Waugh, Pascoe, Lewis, Brewis
Surgeon—E. C. Ward
Paymaster—J. Murray
Engineer—W. Toop
DART—2 guns, 470 tons, 200 h.p.
Commander—J. F. Parry
Lieutenants—May, Helby, Stainer
Surgeon—A. O. Bobarlit
Assistant Paymaster in charge—B. U. Colclough
Engineer—A. Oliver

H. M. SHIPS FOR PROTECTION OF FLOATING TRADE
IN AUSTRALIAN WATERS.

MILDURA—2575 tons, 8 guns, 4000 h.p.
Captain—Henry Leah
Lieutenants—A. E. Greville, R. W. Kiddle, T. G. Oldham,
P. Cooper, C. P. Wilson, R.N.R.
Staff Surgeon—R. Miller
Paymaster—O. E. G. Johnson
Chief Engineer—A. W. Gibbs
KATOONIA—2575 tons, 8 guns, 4000 h.p. (guardship of reserve)
Captain—H. W. S. Gibson
Lieutenants—Shipton, Easton
Staff Surgeon—J. H. Thomas
Staff Paymaster—S. E. Elliott
RINGAROOMA—2575 tons, 8 guns, 4000 h.p. (in reserve)
Fleet Engineer—W. Bromley
WALLAROO—2575 tons, 8 guns, 4000 h.p.
Captain—A. M. Farquhar
Lieutenants—H. Thompson, H. F. J. Rowley, C. R. Wason,
J. D. Spain, R.N.R.
Paymaster—James Maxwell
Staff Engineer—O. H. Steward
Surgeon—G. T. Broatch
TAURANGA—2575 tons, 8 guns, 4000 h.p.
Captain—L. C. Stuart
Lieutenants—C. M. Masters, A. W. Lewis, H. G. Innes-Cave
Staff Surgeon—R. F. Bowle
Paymaster—O. E. O. Webb
Chief Engineer—F. A. Alldon
BOOMERANG—770 tons, 2 guns, 8500 h.p. (in reserve)
Chief Engineer—J. E. Moorshead
KARRAKATTA—770 tons, 2 guns, 8500 h.p.
Lieutenant Commander—R. M. Harbord
Lieutenants—Tomkinson, Chance
Surgeon—E. T. Eames
Engineer—J. W. Crowle

MILITARY FORCES OF NEW SOUTH WALES.

Commander-in-Chief—His Excellency the Right Honorable
William Earl Beauchamp, K.C.M.G., Hon. Colonel-in-Chief
1st Australian (Volunteer) Horse, Governor and Com-
mander-in-Chief of the Colony of New South Wales and its
Dependencies
Private Secretary—Victor Seymour Corkran, Esq.
Clerk to Private Secretary—Harry H. Lewis
Aides-de-Camp—Captain Wilfrid Abel Smith, Grenadier Guards
Extra Aides-de-Camp—Major the Hon. R. H. Lindsay (Lieut.
Royal Scots Greys), Lieut.-Colonel H. P. Airey, D.S.O.,
N.S.W. Artillery

DEFENCE DEPARTMENT.

Colonial Secretary—The Honorable John See, M.L.A.
Principal Under-Secretary—Crichtett Walker, C.M.G., J.P.
General Officer Commanding Military Forces—Major-General
G. A. French, C.M.G., Royal Artillery
Aide-de-Camp—Captain T. F. Knox, N.S.W. Lancers
Extra Aide-de-Camp—Captain L. H. Kyngdon, N.S.W. Artillery

HEAD QUARTERS STAFF.

Assistant Adjutant-General and Chief Staff Officer—Colonel
H. D. Mackenzie, late R.N.
Assistant Quartermaster-General—Lieutenant-Colonel and
Brevet-Colonel J. E. D. Taunton, late 60th Foot
Deputy-Assistant Adjutant-General—*Major M. M. Boam;
Major and Lieutenant-Colonel of Volunteers, M. W. Bayly

Commanding Artillery—Colonel S. C. U. Smith, Royal Artillery
Principal Medical Officer—Colonel W. D. C. Williams
Staff Officer for Engineer Services—Captain and temporary
Major, P. T. Owen
Principal Veterinary Surgeon—Captain A. P. Gribben
Officer in charge of Randwick Rifle Range—Captain H. Le
Patourel
Chief Clerk—Hon. 2nd Lieutenant W. Granger
* Also Staff Officer for unpaid forces.

MILITARY SECRETARY'S DEPARTMENT.

(a) Finance Department—Colonel C. F. Roberts, C.M.G., late
R.A., Military Sec.
(b) Pay Department—C. Solomon, Paymaster
(c) Ordnance Department—Lieutenant-Colonel J. T. Blanchard,
Assistant Commissary-General of Ordnance
Quartermasters—2nd Lieut. W. F. Brown, 2nd Lieut. W.
Horn

N.S.W. LANCERS.

Honorary Colonel—The Right Honorable Baron Carrington,
P.C., G.O.M.G., Lieut.-Colonel Commanding 3rd Oxfordshire
Light Infantry
Commanding—Lieutenant-Colonel J. Burns
Captains—T. F. Knox (seconded as A.D.C. to the G.O.C.),
C. E. Taylor, F. G. Fanning, W. L. Vernon, R. McEvilly,
W. C. Markwell, A. S. Bowman, C. F. Cox
1st Lieutenants—C. J. McRae, G. H. Allan, O. E. Nicholson,
J. D. Wood, A. Hay, H. M. Osborne, F. H. King, J. S.
Brunton
2nd Lieutenants—R. H. Dangar, F. O. Timothy, T. B. Osborne,
J. B. Wilson, S. F. Osborne, W. J. S. Rundle, R. C. Mac-
kenzie, R. M. Heron
 supernumerary 2nd Lieutenants—F. S. D'A. Macquoen, O. W.
F. P. Roberts
Adjutant—Captain G. L. Leo
Quartermaster—Lieutenant and Hon. Captain J. M. Purves

MOUNTED RIFLES.

Honorary Colonel—E. T. H. Hutton, C.B., A.D.C. to the Queen,
Colonel (retired) H.M. 60th Rifles, and late Major-General
Commanding N.S.W. Military Forces
Lieut.-Colonel Commanding—J. W. M. Onslow
Majors—A. S. Menzies, F. Bland (honorary)
Hon. Chaplain—Rev. C. J. King, M.A.
Captains—C. Smith, A. J. O. Thompson, J. F. Thomas, W.
Larkin, T. A. Macchattie
1st Lieutenants—A. A. McLean, W. J. Curle, G. M. M. Onslow,
R. H. Antill, C. A. Lee, W. E. O'Brien
2nd Lieutenants—C. J. Campbell, A. J. M. Onslow, F. A. M.
Onslow, F. C. B. Bland, D. D. L. Tooth, C. G. S. Lydlard
Adjutant—Captain J. M. Antill

FIELD ARTILLERY.

Commanding Brigade Division—Lieutenant-Colonel H. P.
Airey, D.S.O., late 101st Foot
Adjutant—Captain H. W. Dangar
A Battery N.S.W. Regiment of H.A.A.—Lieutenant-Colonel H.
P. Airey, D.S.O.; Captain, H. W. Dangar; Lieutenants, E.
A. Antill, S. E. Christian
B Battery N.S.W. Artillery—Major, R. M. S. Wells; Captain,
C. G. Anderson; Lieutenants, J. H. Schwabe, T. L. Mullins
C Battery N.S.W. Artillery—Captain, Leehan, R. S. Pearce;
Lieutenants Forrest, Hepworth, M. A. O'Callaghan

N.S.W. REGIMENT OF ROYAL AUSTRALIAN ARTILLERY
GARRISON

Majors—F. T. B. Baynes, P. L. Murray, A. H. P. Savage, W. T.
Bridges
Captains—A. G. H. Morris, L. H. Kyngdon, H. Le Mesurier,
A. H. Sandford, A. P. Luscombe
Lieutenants—R. L. H. B. Jenkins, C. W. Lamb, H. J. O.
Taylor, G. E. Bulmer, H. St. J. Sweetland, R. J. Thorpe,
S. S. Ryrie, O. R. Griffiths, T. H. Rouse
Adjutant Garrison Artillery—Captain L. H. Kyngdon; Staff
Captain, Captain A. P. Luscombe
NOTE—Major Bridges is seconded as Chief Instructor and Fire-
master, and Commandant of the School of Gunnery.

N.S.W. ARTILLERY COMPANIES.

Majors—J. S. Wigram, J. Kirkaldy (Brevet Lieutenant-Colonel)
H. O. MacCabe, O. J. Lester
Captains—W. G. Robertson, A. T. Pringle, W. N. J. Lyne,
E. E. G. de Gyulay

1st Lieutenants—A. Beaton, J. J. Amess, J. S. Stark, G. H. Melville, C. F. Brace, A. R. Paul, E. H. Corderoy, H. L. Roberts, E. S. Heady (Cadet)
2nd Lieutenants—G. R. Short, A. T. Hall, I. Chaseling, W. N. Stephens, E. W. Warren, W. Cowlishaw

CORPS OF ENGINEERS.

Staff Officer for Engineer Services—Captain and temporary Major, P. T. Owen
Chief Surveyor—Captain J. H. R. King
Majors—P. B. Walker (Brevet Lieutenant-Colonel), J. H. A. Lee, and T. S. Parrott (Brevet Lieutenant-Colonel)
Captains—C. S. Cansdell, J. Y. Nelson, A. Spain, F. S. Horsley
1st Lieutenants—J. S. Alexander, P. O. Day, A. W. Warden, J. M. Conroy
2nd Lieutenants—A. A. Direks, J. S. Fitzmaurice, R. S. Littlejohn, J. H. D. Brearley
Quartermasters—A. J. Pinchen, D. Watson, C. Parton

FIRST INFANTRY REGIMENT.

Lieutenant-Colonel Commanding—A. Weeks
Major—W. J. N. Oldershaw
Captains—J. Wilkinson (Honorary Major), Albury; W. S. Millard; W. Holmes, Sydney; L. F. M. Armstrong, Sydney; H. E. Jefferson, Wagga; V. Hornum, North Sydney; W. W. R. Watson, Hunter's Hill; P. L. Murray, jun., Sydney; F. A. Shawellhood (Cadet Company)
1st Lieutenants—L. E. Thiney, J. W. Howard, Yass; W. Radford, Albury; G. A. Rourke, Sydney; G. B. Fitzhardinge, Wagga; J. F. McManamey, Sydney; C. Sedgwick, Sydney; J. H. Ashwell, Young; A. J. Macdonald, Sydney; S. T. Taylor, Wagga; C. Kennard, N. Sydney; M. J. Coen, Yass
2nd Lieutenants—J. J. Curran, Albury; G. F. Diamond, Hunter's Hill; M. W. Logan, Sydney; P. McF. Woodhill, Sydney; W. A. Forsyth, Young; P. G. Hewitson, North Sydney; T. J. Butter, Yass; C. G. Moxham, Sydney; W. B. Docker, Sydney; E. M. Sullivan, Wagga; H. E. Lofts (Cadet Company) Sydney
Adjutant—Major G. C. Knight (captain Loyal North Lancashire Regiment)
Quartermaster—2nd Lieutenant and Honorary 1st Lieutenant, J. H. Strong

SECOND INFANTRY REGIMENT.

Lieutenant-Colonel Commanding—G. W. Waddell
Major—S. Mallarky, J. C. Thom (superannuated)
Captains—T. W. Faulkner, Cooma (Honorary Major); J. Napier, Bowral; H. Honey, Kiama (Honorary Major); G. Rammacioti, Sydney; G. H. Holland, Sydney; C. A. Cork, Ulladulla; J. W. Croker, Ashfield; A. E. Chapman, Sydney; T. T. Street, Sydney; A. W. Newman, Goulburn
1st Lieutenants—R. A. Bissaker, Bowral; C. M. Stevenson, Kiama; S. Spain, Sydney; J. C. O'Hara, Sydney; G. Wall, Sydney; A. Warden, Ulladulla; H. Davis, Ashfield; W. P. Plunkett, Sydney; J. B. Byrne, Sydney; H. H. Mawson, Cooma; C. J. Hollofor, Goulburn; R. H. Beardsmore, Sydney; I. G. MacLaren, Sydney
2nd Lieutenants—O. J. Archer, Bowral; K. Ryan, Kiama; J. T. Hackett, Ulladulla; G. A. Robbison, Sydney; F. C. Stephens, Sydney; W. Devereux, Cooma; M. Fitzgerald, Goulburn; P. D. O'Brien, Sydney; F. Wilkin, Ashfield; A. C. Muhs; R. A. Price, Sydney
Adjutant—Captain J. G. Legge
Quartermaster—Hon. 2nd Lieutenant J. Pierce

THIRD INFANTRY REGIMENT.

Colonel Commanding—Colonel the Hon. W. H. Holborow, G.M.G., M.L.C.
Adjutant—Major and Brevet Lieut.-Colonel—C. F. Bartlett, General Staff
Major—Major and Bt. Lieut.-Colonel C. S. Guest; Major W. J. Ferris, M.L.A., Acting Quartermaster (superannuated)
Captains—Capt and Hon. Major C. H. Barton (G company), Wellington; W. H. Hudson (B), Bathurst; J. Lamrock (D), Richmond; W. Lamrock (C), Orange; W. Abernethy (F), Mudgee; J. J. Paine (A), Windsor; H. J. Tressler (J), Dubbo; T. W. K. Waldron (K), Penrith
1st Lieutenants—J. W. J. Torpy (C company), Orange; A. T. Pringle (B), Bathurst; E. Burns (E), Lithgow (commanding company); J. G. Tedder (K), Penrith; J. E. Guyot (H), Parramatta (commanding company); H. G. Grace (J), Dubbo; G. A. H. Holborow (D), Richmond; B. H. Paine (A), Windsor; G. A. Blumer (F), Mudgee; E. Martin (G), Wellington

2nd Lieutenants—J. J. M. Craig (E company), O. F. Duchatel (B), D. McDonald (K), F. W. Moppett (D), G. M. Greenwell (D), J. L. Browne (E), A. W. Sheppard (F), J. Henne (J), J. T. Fitzgerald (A), W. H. Pridham (G)
Medical Officer—Captain A. E. Perkins, Regt. Staff
Sergeant Major—Warrant Officer E. J. Sullivan, Permanent Staff

FOURTH INFANTRY REGIMENT.

Lieutenant-Colonel C. M. Ranceaud, Commanding
Majors—A. J. Gould (seconded), R. A. Waddy
Captains—J. B. Nash, Lambton, Honorary Major; G. J. Burnage, Newcastle, Honorary Major; M. H. Fitzhardinge, Glen Innes, Honorary Major (seconded); A. Langwill, Singleton; E. Bowman, Muswellbrook; R. W. Arnott, Armidale (seconded); J. Paton, Wallend; H. T. M. Williams, Morpeth; G. A. M. Nankervis, Tamworth; J. W. Scobie, Maitland; W. Scott, Glen Innes
1st Lieutenants—W. F. X. Byrne, Lambton; C. R. Donaldson, Newcastle; J. E. McIntyre, Muswellbrook; S. Crowlance, Wallend; E. W. Brierley, Tamworth; G. F. Braund, Armidale; E. Nash, Maitland; W. G. Conley, Singleton; G. Wayne, Morpeth; C. R. Cunningham, Glen Innes
2nd Lieutenants—W. Henderson, Newcastle; J. W. Clark, Wallend; F. L. A. Dwyer, Morpeth; T. M. Johnstone, Armidale; J. N. Peck, Maitland; W. J. Cragg, Singleton; P. P. Abbott, Glen Innes; J. W. Jackson, Muswellbrook; F. H. Finch, Lambton
Adjutant—Captain M. A. Hillard
Quartermaster—1st Lieutenant J. P. McGlinn

N.S.W. ARMY MEDICAL CORPS.

Principal Medical Officer—Colonel W. D. C. Williams
Bt. Lieut.-Colonel Commanding—R. V. Kelly
Captains—W. D. Eames, R. E. Roth, C. Sturt, G. R. Alcorn, T. H. Fiaschi, F. Milford, J. L. Beeson, G. A. Marshall, J. Marshall, F. H. Wrigley, T. A. Green, J. B. Moore, A. E. Perkins, G. H. W. Smith, H. Kirkland
Honorary Lieutenants—R. J. Leeper, R. J. Morice, W. Kelly, W. M. Helsham, R. D. McMaster, C. E. Cronmellin, S. H. Schrader, G. Watt, J. English, B. J. Newmarch, W. Irwin, G. Read, C. G. Dawson, F. G. Connor, L. D. Parry, D. T. Edmunds, C. F. Warren, T. M. Martin, C. A. Edwards, F. W. Hall, H. E. Lee, J. B. Crabbe, G. L. Mullins, G. S. Samuelson, E. P. McDonnell, R. Bethm, M. G. Dundas, J. Kerr
Quartermaster—2nd Lieutenant E. J. Beauman

VETERINARY DEPARTMENT.

Principal Veterinary Surgeon—Captain A. P. Gribben
Honorary Veterinary Surgeon Lieutenants—F. W. Melbush, H. Bowker

RESERVE OF OFFICERS.

Lieutenant-Colonel and Bt. Colonel—F. Wells
Lieutenant-Colonel—H. W. Strong, G. F. Dansey (Surgeon), W. F. Longfield, H. B. Lasseter
Majors—J. W. McCutcheon, G. Davidson, J. McLeod (Surgeon), S. H. MacCulloch (Surgeon), J. M. Small, W. J. Sloan, J. J. Walters, E. J. Jenkins (Surgeon), A. J. Hood (Surgeon), A. Broughton
Captains—H. C. L. Anderson, J. H. Watson, J. Moore, W. R. H. Pope, S. Pegum, C. H. Wilkinson, W. Foskett, D. B. M. Clarke, A. F. Lloyd, J. Paterson, R. M. McC. Anderson, T. J. Barnett, G. B. Newman, C. A. C. Chauvel, J. Dunlop, W. F. Woods, H. J. Ash, W. B. Bernasconi, G. Sheppard, E. T. F. Gomin, J. E. Aggar, M. Rogerson, H. P. R. Copeland, J. M. Mason, L. Bernstein (Surgeon), G. Addison, E. W. R. Soane, J. S. Mason, C. A. Owen, F. F. Cheffins, J. H. Clark, M. H. Cleve, G. Osborne, T. J. Oremen, A. G. Fitzhardinge, A. J. Bennett, A. Talbot, G. Bradbury, H. B. Jefferson, W. Larkin, W. P. W. Mulholland, W. H. Purser, C. J. Lamb
1st Lieutenants—J. J. Quirk, C. F. Butler, A. C. F. Webb, D. D. Pye, G. McRae, E. McC. Alliman, J. Cameron, H. N. Macdonald, C. J. Ross, R. M. Graham, G. T. Hindmarsh, E. M. D. Spring, F. G. Broinowski, R. P. Martin, C. F. Airey, F. H. Judges, W. B. Thomas, G. B. Forster, A. Beckett, B. Rhodes, E. C. C. Campbell, E. T. Davis, F. H. Campion, O. W. Thomas, A. Campbell, C. W. Thomas, A. Campbell, O. T. Champion, J. H. F. Waller, J. F. Elphinstone, H. G. Holle, D. P. O'Reilly, G. Moore, H. A. Unwin, W. J. Curle, E. S. Heady, R. H. Antill, F. S. Stokes, F. C. Stephens, C. E. Campbell, T. L. Wilkinson

2nd Lieutenants—F. Weston, H. W. Kennard, G. N. Roche, T. M. Hewitt, H. Green, W. Clarke, H. Macfarlane, H. Hunt, J. G. Lalng, P. B. Colquhoun, J. A. Daley, F. A. W. Thomas

CHAPLAINS.

Oburgh of England—Rev. H. W. Mort, Rev. H. J. Rose, Rev. E. C. Beck, Rev. T. V. Alkin, Rev. J. W. Gillett, Rev. J. T. Evans, Rev. G. North-Ash, Rev. C. J. King, Rev. W. J. Dumtan, Rev. H. D. Vidal Senly, Rev. F. O. Williams
Presbyterian—Rev. W. M. Dill-Mackay, Rev. J. C. Kinghorn, Rev. J. Fulton
Wesleyan—Rev. S. Wilkinson
Roman Catholic—Rev. P. Piquet

CADET CORPS.

(Not under Department of Public Instruction.)

St. Ignatius College (Riverview)—Rev. T. Gartlan, hon. captain
King's School (Parramatta)—W. S. Corr, hon. captain
Newington College (Stanmore)—C. A. Buchanan, hon. captain
The Armidale School
University College, Manly
The Scots College, Rose Bay

1ST AUSTRALIAN HORSE.

Headquarters—Office, 9 Richmond Terrace, Domain, Sydney
Lieutenant-Colonel Commanding—J. A. K. Mackay
Major (second in command)—The Hon. R. H. Lindsay, A.D.C., Royal Scots Greys
Adjutant (permanent staff)—R. R. Thompson, 1st Lieutenant
2nd Lieutenants—J. K. Bourke (Murrumburrah), T. H. H. Goodwin (Gunnedah), W. T. Griffin (Gundagai), P. D. Cox (Quirindi), W. V. Dowling (Mudgee), R. H. E. Upton (Scone), G. de L. Ryrie (Michelego), R. Clarke (Boggabri), W. Miller (Cootamundra), J. E. Mackellar (Braidwood), K. M. Wray (Goulburn), A. I. Cox (Mudgee), T. K. Harrison (Boggabri), T. L. Willsallen (Gunnedah), J. B. N. Osborne (Bungendore), G. R. Irving, C. W. Russell (Murrumburrah), A. G. White (Bellbells), A. E. Cox (Rylstone), W. M. Ryrie (Michelego), J. F. M. Wilkinson
Quartermaster—W. H. Wood (hon. 2nd Lieutenant)

5TH I. REGIMENT—SCOTTISH RIFLES.

Lieutenant-Colonel G. R. Campbell, Commanding
Major—W. Robertson
Quartermaster—Captain T. B. Dibbs
Adjutant—Lieutenant C. W. Lamb, R.A.A.
Captains—F. A. Dore, Sydney; R. Machardy, Sydney; F. T. Wilson, Sydney; N. Grant, Newcastle
Lieutenants—F. M. Ross, Sydney; W. K. S. McKenzie, Sydney; K. K. Mackellar, Sydney; H. MacLaurin, Sydney; N. Muir, Sydney; J. A. Newton, Newcastle; G. A. T. Mackay, Maclean; T. M. Lobban, Maclean; J. Cameron, Maclean

IRISH RIFLES.

Major J. H. P. Murray, Commanding
Captains—P. B. Freidill, J. L. Mullins
1st Lieutenants—H. D. L. Woods, J. T. Toohey, M. J. Brown
2nd Lieutenants—H. H. McMahon, P. F. Mcagher

SIXTH INFANTRY REGIMENT—AUSTRALIAN RIFLES (VOLUNTEERS).

Lieutenant-Colonel Commanding—F. A. Wright
Major—H. Passmore
Captains—G. Michaelis, W. D. McIlvride, E. C. Cooke (Hornsby), J. A. Chuok (Newtown), C. J. McShane (Goulburn)
1st Lieutenants—A. S. Hughes (Sydney), J. W. S. Campbell (Hornsby), P. L. Curtis (Sydney), J. H. E. Booker (Newtown), P. K. Clark (Goulburn)
2nd Lieutenants—H. Caines (Sydney), P. H. M. Craue (Sydney), W. G. T. Goodman (Hornsby), J. M. Arnott (Sydney), A. McKye (Hornsby)
Adjutant (Permanent Staff)—Lieutenant G. J. Grieve
Quartermaster—R. H. Reynolds (hon. captain)

SEVENTH INFANTRY REGIMENT.

Lieutenant-Colonel Commanding—J. C. Neild
Major—J. C. Waiane

Captains—W. Morgan (Sydney), T. A. Smith (Sydney), W. H. Wilks (Balmain), R. B. Copley (Leichhardt), J. W. Nieslgh (Sydney), J. W. Gosbell (Sydney)

1st Lieutenants—W. O. Reynolds (Sydney), J. F. Smith (Sydney), E. Darnley (Leichhardt), F. W. O. Craue (Sydney), R. M. Shears (Sydney)
2nd Lieutenants—L. Solomon (Sydney), A. F. G. H. Renard (Sydney), J. G. Pigg (Leichhardt), F. Walsh, J. Finney, S. Davis, H. J. Parker, G. K. Kirkland
Adjutant (Permanent Staff)—A. Holmes, 1st Lieutenant
Quartermaster—J. T. Brignell (hon. 2nd Lieutenant)
Honorary Chaplain—Rev. J. W. Gillett, B.A.

NATIONAL GUARD (VOLUNTEERS).

Captain Commanding—Sir G. R. Dibbs, K.C.M.G.
Lieutenants—W. Henderson, W. H. Moseley

ARMY SERVICE CORPS.

Major Commanding—D. Miller
Captains—R. S. Smith, A. F. Tunks
1st Lieutenants—H. C. D. Taunton, D. F. Miller
2nd Lieutenants—C. O. Basche, P. W. Smith, W. R. Harriot
Adjutant and Quartermaster—Lieutenant R. J. Beauman (General Staff)

NEW SOUTH WALES NAVAL FORCES.

STAFF.

Commanding Naval Forces—Captain F. Hixson (late R.N.)
Commanders—G. S. Lindeman, retired R.N., commanding Naval Brigade; G. S. Bosanquet, retired R.N., commander, N.A.V.
Paymaster, Naval Forces—F. Rule
Engineer—W. Ames

NAVAL BRIGADE.

Commander—E. R. Connor, late Navigating Lieutenant R.N.
Lieutenant-Commander—F. Gardiner
Lieutenants—H. Gillman, W. T. Broomfield, F. W. Hixson, H. O. N. Hixson, H. L. Hixson
Sub-Lieutenants—S. W. Spain, H. Binne, G. Banks, R. S. Lambton, W. L. Thompson, J. E. Morris, Y. G. Lindeman (acting)
Chief Warrant Officer—W. G. Rickwood
Midshipmen—B. P. Black, D. P. Evans-Jones, O. H. Read, U. T. Norris, J. Milson, G. M. Barker, G. H. Dick, H. C. White (acting)
Cadets—L. Walker, R. C. Creer, O. Gillam, H. Creer, L. S. Bracegirdle, G. E. Murnin
Fleet Surgeon—S. T. Knaggs
Surgeons—T. M. Kendall, W. J. R. Nickson, J. J. Steet

NAVAL VOLUNTEER ARTILLERY.

Lieutenants—A. W. Walsh, V. W. Williams, F. H. Brownlow, E. B. Falk, M. A. Roberts
Sub-Lieutenants—F. I. Ives, W. Alcock, C. H. Coggins, A. F. Stephens, C. S. Gillham, J. H. Wood, S. B. White, S. S. Wilson
Secretary and Paymaster—J. A. Rose
Surgeons—W. B. Violette, G. D. Hughes (honorary)
Warrant Officer—J. Rolfe (Naval Volunteer Artillery)

METROPOLITAN TRANSIT COMMISSIONERS.

Office, 163 Phillip street.

Chairman—The Mayor of Sydney
Commissioners—George H. Sparks, Edmund Fosbery, Inspector-General of Police; John Norton, M.L.A., Licensee's Commissioner; Registrar and Chief Inspector, Alfred Edward; Assistant Inspector, Frederick Sayer

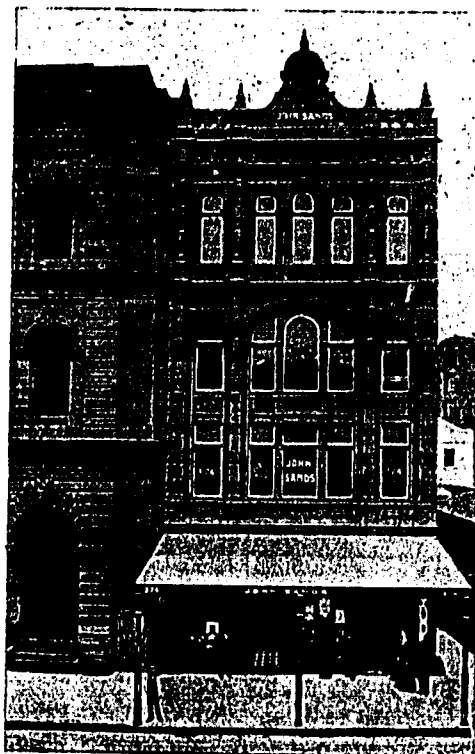
GOVERNORS OF THE AUSTRALIAN COLONIES.

New South Wales—The Right Hon. Earl Beauchamp, K.C.M.G.
Victoria—The Right Hon. Lord Brassey, K.C.B., D.C.L.
Queensland—The Right Hon. Lord Lamington, K.C.M.G.
Tasmania—The Right Hon. Viscount Gormanston, K.C.M.G.
South Australia—The Right Hon. Lord Tennyson, K.C.M.G.
West Australia—Lieut.-Colonel Sir Gerard Smith, K.C.M.G.
New Zealand—The Right Hon. The Earl of Ranfurly, K.C.M.G.
Fiji—Sir G. T. M. O'Brien, K.C.M.G.
British New Guinea—G. R. Le Hunte, Esq., C.M.G.

JOHN SANDS.

ESTABLISHED 1837.

STATIONER, PRINTER, BOOKBINDER,
LITHOGRAPHER, &c.



DEALER IN THE FINE ARTS.
All the Latest Importations.

374 GEORGE STREET,

SYDNEY.

(NEXT GENERAL POST OFFICE.)

CUSTOMS DUTIES.

THE NEW TARIFF.

SCHEDULE A.			
Permanent Tariff.		s. d.	
Spirits—			
On all kinds of spirits and spirituous compounds imported and not otherwise enumerated	per pt. gal.	14 0	
No allowance beyond 16° shall be made for the under-proof of any spirit of a less strength than 16° under proof			
Case Spirits—Contents of two, three, four, or five gallons shall be charged—			
Two gallons and under, as two gallons.			
Over two gallons and not exceeding three, as three gallons.			
Over three gallons and not exceeding four, as four gallons.			
Over four gallons and not exceeding five, as five gallons.			
Bitters, essences, fluid extracts, sarsaparilla, tinctures, medicines, infusions, and toilet preparations, containing—			
Not more than 25 per cent. of proof spirit	per gallon	8 6	
Not more than 50 per cent. of proof spirit	per gallon	7 0	
Not more than 75 per cent. of proof spirit	per gallon	10 6	
If containing more than 75 per cent. of proof spirit	per gallon	14 0	
If containing spirit over-proof to be charged as spirituous compounds	per pt. gal.	14 0	
Methylated spirit	per gallon	0 1	
Perfumed spirits, perfumed waters, Florida water, and Bay rum	per liq. gal	20 0	
Wines—			
Sparkling—for six reputed quarts, or twelve reputed pints		10 0	
Other kinds	per gallon	5 0	
Other kinds—for six reputed quarts, or twelve reputed pints		5 0	
Beer, ale, porter, spruce, or other beer, cider, and perry—			
In wood or jar... .. .	per gallon	0 0	
In bottle	per gallon	0 0	
For six reputed quarts, or twelve reputed pints	per gallon	0 0	
Tobacco—delivered from ship's side or from a Customs bond for home consumption—manufactured, unmanufactured, and snuff	per lb.	3 0	
Tobacco—unmanufactured, entered to be manufactured in the colony. At the time of removal from a Customs bond or from an importing ship to any licensed tobacco manufactory for manufacturing purposes only into tobacco, cigars, and cigarettes ..	per lb.	1 0	
Tobacco—sheepwash	per lb.	0 3	
Cigars	per lb.	0 0	
Cigarettes (including wrappers)	per lb.	0 0	
Opium and any preparation thereof	per lb.	20 0	
Tea	per lb.	0 1	
Biscuits	per lb.	0 1	
Confectionery (including cakes, comfits, liquorice, liquorice paste, lozenges of all kinds, cocoanut in sugar, sugar-candy, succades, and sweetmeats)	per lb.	0 1	
Fruits—Dried, candied, and prunes (exclusive of dates)	per lb.	0 2	
Jams and jellies per lb., or reputed package of that weight, and so in proportion for any such reputed weight	per lb.	0 1	
Preserves and canned fruits, fruits boiled, peel drained or dry	per lb.	0 1	
Sugar—			
Refined	per cwt.	4 0	
Raw and solid glucose	per cwt.	3 0	
Molasses and treacle—glucose, liquid and syrup	per cwt.	2 0	

STAMP DUTIES.

SCHEDULE A.

Agreements not under seal 0 1 0

BANK NOTES.

An annual composition to be paid by banking companies in lieu of duties on promissory notes payable on demand issued by them—
For every £100, and also for the fractional part of £100 of the average annual amount of such notes in circulation as certified under 4 Vic. No. 13 2 0 0

BILLS OF EXCHANGE OR PROMISSORY NOTES.

For every £25 or any fractional part thereof 0 0 6

BILLS OF LADING.

For every bill of lading or copy thereof 0 0 6

CONVEYANCES.

Conveyance or transfer on sale of any share or shares in the stock and funds of any corporation company or society whatever in New South Wales—
For every £10, and also for any fractional part of £10, of the consideration money therein expressed 0 0 6
Mining stock is exempt from stamp duty on transfer if dated after 25th Sept., 1890
Conveyance or transfer on sale of any property except such stock and funds as aforesaid—
Where the amount or value of the consideration for the sale does not exceed £50 0 5 0
Exceeds £50 and does not exceed £100 0 10 0
For every £100 and also for any fractional part of £100 of such amount or value 0 10 0
Conveyance of any other kind not before charged 1 0 0

DEED OR INSTRUMENT.

Deed of any kind whatever not otherwise charged in this schedule 1 0 0

DRAFTS.

Payable on demand 0 0 1

LEASES.

LEASE (1.) For any definite term or for any indefinite term of any lands, tenements, or heritable subjects—
Where the consideration or any part of the consideration moving either to the lessor or to any other person shall consist of any money, stock, or security—
The same duty as a conveyance on a sale for the same consideration.

In respect of such consideration—
Where the consideration or any part of the consideration shall be any rent—
In respect of such consideration—
For every sum not exceeding £50 per annum £ s. d.
0 2 6
And for every £50 or fractional part of £50 per annum 0 2 6
(2.) Of any other kind whatsoever 1 0 0

MEMORANDUM OF TRANSFER UNDER THE ACT 26, VICT. NO. 9.

The same duty as for a conveyance. For the sale of lands for a like sum the consideration of such transfer.

POLICIES OF INSURANCE.

Policy for or against loss by fire—
For every £100, and also for every fractional part of £100, insured for any term or period exceeding six calendar months 0 0 6
And not exceeding six months 0 0 3
On every renewal or continuance thereof for every £100, and for every fractional part of £100 insured for any term 0 0 3
Policy for any voyage or period—
For every £100, and also for any fractional part of £100 so insured 0 0 3
On every renewal or continuance thereof, for every £100 or fractional part of £100 0 0 3
Policy not otherwise specified—
For every £100, and for every fractional part of £100 insured 0 1 0

Exemptions.

Any policy of insurance on life or any public hospital of charitable institution.
Any policy of insurance on the tools, implements of work or labour used by any working mechanic, artificer, handicraftsman, or labourer by a separate policy in a distinct sum.
Any policy whereby any insurance company, or underwriter or association of underwriters may effect an insurance or transaction, the original policy representing which may have already contributed to the Stamp Duty imposed on policies.
Provided that the fact of such policy being a re-insurance policy shall be expressed on the face thereof.

RECEIPTS.

RECEIPT—Given for or upon the payment of any sum of money amounting to £2 and upwards £ s. d.
0 0 2
PASTORAL LEASES—OCCUPATION LEASES—
HOMESTEAD LEASES—ANNUAL LEASES—
For every £100 or fractional part of £100 0 10 0

Exemptions.

Any receipt given for or upon the payment of money to or for the use of Her Majesty.
Any acknowledgment by any banker of the receipt of any bill of exchange or promissory note for the purpose of being presented for acceptance or payment.
Any acknowledgment by any person on the receipt of money for the purchase of stock or shares in any banking or public company.
Any acknowledgment or receipt given by any laborer, artificer or workman for or on account of wages received by him.
Any receipt written upon or given for a bill of exchange or promissory note duly stamped.
Any receipt indorsed or otherwise written upon or contained in any instrument liable to stamp duty, and duly stamped acknowledging the receipt of the consideration money therein expressed.
Any receipt given by depositors on receiving deposits from any savings bank.

Any acknowledgment given for money deposited in any bank to be accounted for. Provided that this exemption shall not extend to acknowledgments for any sum carried to the credit of any depositor or shareholder in any bank or any division of profits made by such bank, or for or in respect of any dividend from any Joint Stock or other company on the same being deposited by any person to the credit of any other person in any bank; or for or in respect of any sum paid to the credit of any person in any bank for rent or interest by any other person; or for or in respect of any sum deposited which would be liable to duty if paid directly by any person to any other person.

Any receipt given in anticipation of a bill of lading, and not to be used in lieu thereof.

SCHEDULE B.—(Under Act of 1886.) DUTIES ON THE ESTATES OF DECEASED PERSONS.

PART I.

1. ON THE PROBATE OR LETTERS OF ADMINISTRATION to be granted in respect of any estate, real and personal, of deceased persons—

Where the value of such estate is under £5000 .. £1 per cent.
Where the value is £5000 and under £12,500 .. £2 per cent.
Where the value is £12,500 and under £25,000 .. £3 per cent.
Where the value is £25,000 and under £50,000 .. £4 per cent.
Where the value is £50,000 and over that amount £5 per cent.

PART II.

2. Settlement of property containing any trust to take effect after death of settlor, same duties as Part I.

NOTE.—Under the Probate Act all estates not exceeding the gross value of £200 are exempt from duty.

WHARFAGE AND TONNAGE RATES.

	s. d.		s. d.
Acids, the carboy or case	0 6	Brimstone, loose, per ton	1 8
Agricultural Machinery and Implements—		in packages, as drugs	0 6
Drilling and sowing		Brooms, per dozen, loose or in bundles	0 2
Haymaking		Brushware, per bale or case	0 9
Reaping and binding	per ton on 40 cubic feet 1 8	Buckets and pails, per dozen	0 4
Threshing		Butter, per cwt.	0 1
Winnowing		Cables, coil, hemp, manilla, iron rope, per ton weight	1 8
Horse-power		Candles, per box of 28 lbs. and under	0 1
Ploughs	loose, each 0 4	Canes or rattans, per 100 bundles	1 8
Harrows		loose, per 100	0 1
Cornshellers		Cannon, per ton weight	1 8
Alkali, loose, per ton	1 8	Canvases, the bale or case	0 9
in packages, as drugs		Carpets, the bale or case	1 0
Alum, loose, per ton	1 8	Carraway seeds, the package	0 4
in packages, as drugs		Carrots, the cwt	0 1
Almonds, in bags, each	0 2	Carriage and Carts, 4-wheel each	5 0
in cask or case	0 3	2-wheel	2 6
in cask or case	1 8	Casks, empty, each	0 2
Animals—Horses, including Ponies and Cobs, Horned	1 8	Castor Oil, per package	0 2
Cattle, Asses, and Mules, each	0 3	Cement, the barrel	0 4
Calves, Sheep, Goats, or Pigs, each	0 1	Chairs, packed in pieces, per package	0 4
Anvils, per cwt.	0 1	Chalk, loose, per ton	1 8
Apparel, wearing, per bale or case	0 9	in casks, per package	0 4
Axe-trees, iron, per ton	1 8	Cheese, per cwt., loose or in cask	0 1
Ale or Beer. See Liquids.		in case or package	0 2
Bacon, bundle or loose, per cwt	0 1	Chicory, per package	0 4
in case	0 4	Chinaware, as Earthenware	0 2
Bags, the bale or package	0 6	Chocolate, per package	0 6
Ballast, per ton	0 6	Cigars, per package	1 8
Bark, loose or in bags, the ton	1 8	Clay, fire and other, per ton weight	0 9
Baskets, per package	0 6	Clothing, per case or bale	0 1
empty, each	0 1	Clothes-pins, in boxes, per box	0 2
Bellows, Smiths' the pair	0 4	Clover Seed, the bag	0 2
Billiard tables, each	3 0	the case or cask	0 4
Biscuits, the bag	0 2	Coals, per ton	0 6
in cask or case	0 4	coke	1 0
Blacking, liquid, per package	0 4	Cocoanuts, per 100	0 4
cake or paste, per package	0 2	Cocoa and Cocoa Nibs, the bag	0 2
Blankets, bale or case	0 9	Cocon, prepared, per package	0 2
Blue, per box of 56 lbs. and under	0 2	Coffee, in bags, per ton gross	1 8
for each additional 56 lbs. or fractional part thereof	0 1	in casks	2 6
Books, per package	0 4	Coil Rope or Fibre, per ton	1 8
Boots and shoes, per trunk or box	0 3	Confectionery, per package	0 3
Bottles, empty, per package	0 4	Copper, loose, per ton	1 8
Bran, per bushel	0 0 4	Sheets, in cases, per cwt, or fractional part	0 1
Bricks, tiles, and slates, per 500	1 6	thereof	0 1
Fire-bricks, per 400	1 6	Copra, per ton weight	1 8
Fire-lumps, slabs, and tiles, per ton weight	1 8		

ANTHONY HORDERN & SONS, UNIVERSAL PROVIDERS, HAYMARKET (ONLY), SYDNEY
1856 WHARFAGE AND TONNAGE RATES.

	s. d.		s. d.
Cordage per ton weight..	1 8	Hops, per cwt. or fractional part thereof	0 3
Corks, per package	0 4	Hoops, iron, the ton weight	1 8
Cotton Waste, per package	0 9	wood, per dozen	0 2
Crab Winches	0 6	Hollowware. As hardware	
Currents, per package of 112lbs. and under..	0 2	Ice, the ton weight	1 8
" for each additional cwt., or fractional part thereof	0 1	India-rubber goods, the package	0 9
Outlery, including Axes, Hatchets, Tomahawks, Tools, Knives and Forks, Scythes, Swords, and Sheep-shears. See Hardware.		Iron tanks, empty, of 400 gallons	2 0
Curiosities, per package	0 4	" 200	1 0
Dates	0 2	" when filled with goods, the 400 gallons	3 6
Doors, each	0 1	Iron, in bars, castings, hoop, rod, hurdles, fencing-wire, pig, pots, pipes, ovens, sheet, railway, per ton	2 6
Drapery, the bale or case	0 9	" galvanised, loose or in package	1 8
Drugs and Apothecary ware, per package..	0 6	Ironmongery. See Hardware.	
" the bag, drum or keg	0 2	Jute, per ton	1 8
Earthenware, the crate	1 8	Kerosene oil, per case	0 2
" the cask	1 0	Liquids—Spirits, wines, cordials, the octave and under..	0 2
" in other packages, per package	0 6	" quarter-cask	0 3
Eau de Cologne, the package	0 0	" hoghead	0 6
Essences and Essential Oils, the package	0 6	" puncheon	0 9
Engines, Fire, each	3 4	" pipe or butt	1 0
Engines, Garden and Beer	0 8	" longer, and tun butt..	1 8
Feathers, the package	0 9	" in bottle, quarts, 3 dozen and under	0 2
Felt, the bale or case	0 9	" additional, for each dozen	0 1
Figs, per cwt., or fractional part thereof	0 2	" pints, 4 dozen and under	0 2
" in iron tanks. See Iron Tanks.		" additional, for each dozen	0 0 4
Firearms, the chest or case	0 9	" Geneva, case	0 2
Fish, in tins—lobsters, salmon, sardines, oysters, herrings, and others, the case	0 2	" Ale, beer, cider, perry, vinegar, firkin or kilder-kin, 18 gallons and under	0 2
Fish, Dried—codfish, herrings, ling, &c., the case	0 3	" barrel	0 4
" the half-barrel and under	0 2	" hhd.	0 5
" " barrel	0 3	" butt	1 0
" " hoghead	0 6	" in bottle, quarts, 2 dozen and under	0 2
" " puncheon	1 0	" additional, for each dozen	0 1
Flax, the ton	1 8	" pints, 6 dozen and under	0 3
Floorcloth, the package..	1 0	" additional, for each dozen or fractional part thereof	0 4
Flour, in bags, per 2,000 lbs	1 0	Lard, per package	0 2
" in barrels, each	1 8	Lampware. As Hardware	
Flowers, artificial, per package	0 3	Lacqueredware. As Hardware	
Furs, the package	0 9	Lead, in bulk, roll, pipe, or package, per ton	1 8
Frying pans, loose or bundle, per dozen	0 2	Leather, bale, case, or bundle	0 9
" in casks, as Hardware.		Lime, per ton	1 8
Furniture, per ton of 40 cubic feet	1 8	Linens, the package	0 9
Fruit, green, per package	0 1	Lucerne seed, the bag	0 2
Ginger, per package	0 2	" the case or cask..	0 4
Glass (Window), per case	0 2	Machinery, per ton of 20 cwt. or 40 cubic feet	1 8
Glass (Plate), per package	1 0	Marble, in block, the ton	1 8
Glassware. See earthenware..		" manufactured, per package	0 9
Glucose, per ton, gross	1 8	Mangles, per package	0 6
Glue, per package	0 6	Mattings, the roll	0 2
Grain, including barley, beans, corn, dholl, gram, maize, malt, oats, peas, wheat, loose or in bags, per ton	1 8	Matches, per package	0 2
" in tanks. See Iron tanks		Millinery, per case or bale	0 9
Grapnels, per cwt.	0 1	Mill-stones, per ton weight	1 8
Grates (castings) loose, per ton	1 8	Molasses, in casks or tanks, per ton gross..	1 8
" per package	0 6	Mother-of-pearl shells, loose, the ton	1 8
Grindery, per package	0 9	" in packages, each	0 4
Grindstones, each..	0 1	Musical instruments (not pianos), per package	0 9
Gunny bags, per bale, or bundle	0 9	Nails, screws, rivets, nuts, bolts, and washers, packages 112 lbs. and under	0 1
Gypsum, loose, per ton weight	1 8	" Additional, for each cwt., or fractional part thereof	0 1
" per package	0 3	Nuts, the bag	0 2
Hardware and hollowware, including outlery, iron-mongery, axeheads, axes, hatchets, tomahawks, tools, knives and forks, scythes, swords, sheep-shears, lacqueredware, lampware		Nutmegs, the package	0 2
" The drum or keg	0 2	Oatmeal, per keg..	0 2
" barrel	0 3	" in other package	0 3
" bag, bale, box or bundle.	0 4	Oakum, per ton weight	1 8
" case	0 6	Oars, loose, or bundle, per dozen	0 4
" crate or cask	1 0	" in cases, per package	0 6
Hair, the package	0 6	Oils: Fish, seal, or cocoanut, in casks, per 100 gallons	1 0
Haberdashery, per bale or case	0 9	Oil cake, per ton..	1 8
Harp. See musical instruments		Oil, castor, per case	0 2
Hats, the case	1 0	Ollmen's and general stores—	
Hams, loose, per dozen	0 2	Anchovies	Isinglass
" in case	0 4	Arrowroot	Maccaroni
" in cask	0 6	Brandied fruits	Malzena
Hay, per ton	1 8	Bottled fruits	Milk, Swiss
Hemp, the ton weight	1 8	Blacklead	Mustard
Hides, per 40	1 8	Brunswick black	Pearl barley
		Capers	Pickles
		Chillies	

WOOD & COMPANY, Undertakers & Embalmers, 6 New Canterbury Rd., P'sh'm. Tel. 22 P'sh'm

ANTHONY HORDERN'S FOR BUCKLES AND BRACES—'BROIDERIES AND LACES
WHARFAGE AND TONNAGE RATES. 1857

	s. d.		s. d.
Corn-flour, dried fruits, fancy soaps, groats, jams and jellies, preserves, sauces, salad oil, vermicelli—		Tallow, per cwt. ..	0 1
Per case..	0 2	Tanks. See iron tanks.	
In tanks. See iron tanks.		box 20 lbs. net	0 0 8
Oils, linseed and other oils (not fish, seal, or cocoanut)—		packages over 20 lbs., but not over 50 lbs. net	0 1 2
" drum or keg	0 2	" 50 " " " "	0 2
" barrel or quarter-cask	0 8	" chests " 65 " " " "	0 8
" hoghead	0 6	Timber, deals, ends, and all sawn timber, per 600 feet superficial	1 8
" puncheon	0 9	" Rough timber and spars, per 40 cubic feet	1 8
" pipe	1 0	" Laths, trenails, shingles, per 1,000.	0 4
" tun butt	1 8	" Posts and rails, per 100	1 8
Onions, per. cwt...	0 1	" Pailings, per 600	1 8
Ores, metallic, per ton	0 9	" Spokes, per 500	1 8
Paddy. As Rice		" Staves, coopers', per 100	1 8
Paints, colours, putty, and dryers, packages of 56 lbs. and under	0 1	Tobacco manufactured, packages 112 lbs. and under	0 2
" packages from 56 lbs. to 112 lbs. inclusive	0 2	" additional for each cwt., or fractional part thereof	0 1
" for each additional cwt. or fractional part..	0 1	" in leaf, on all packages per cwt., or fractional part thereof	0 2
Paper—Paper bags, paperhangings, sand and glass		Tin, per ton	1 8
paper, and millboards, per package	0 9	Tin plates, per box	0 2
Pepper, the bag	0 2	Tobacco pipes, clay, in boxes, per box	0 1
Perfumery, the case	0 0	Tubs, per nest	0 4
Planofortes, each	2 6	Turnery, cask, case, or package	0 9
Pictures, per package	0 9	Turpentine, per keg, drum, or case	0 2
Piece goods, bale or case	0 9	Twine, sash lines, and halters, per package	0 9
Pitch and tar, the drum	0 2	Varnish or polish, per package	0 2
" the barrel	0 3	Weigh bridges (as machinery)	
Potatoes, per ton..	1 8	Weighting machines, portable, per package	0 9
Provisions, beef		Wire netting, loose, per roll	0 2
" pork	0 2	" in packages	0 8
" tongues	0 4	Whaleboats, and others	1 0
" tripe	0 6	Whalebone, the ton	1 8
Preserved meats, per package..	0 2	Wheelbarrows, single, each	0 2
Pumice stones, per package	0 4	" in packages. As hardware.	
Quicksilver, per bottle	0 2	Whiting, the package	0 4
Raisins, per 112 lbs. or fractional part thereof	0 2	Wheels, coach or cart, each	0 2
" in tanks. See iron tanks.		Wool, the bale	0 8
Rattans. See Canes		Woolpacks, per bale of 50 and under	0 8
Rice, per ton	1 8	" of over 50 and not exceeding 100	1 0
Rope, Hemp, Wire, and all other Rope, per ton	1 8	Wool bagging, per bale	1 0
Saddlery, the package	0 9	Yams, per ton	1 8
Sago, per bag	0 2	Zinc, per cwt.	0 1
Salt—Rock, per ton	1 8	Undefined and unenumerated goods, heavy, to be charged weight per ton of 2240lbs.	1 8
" in bags, per ton	1 8	Undefined and unenumerated goods, light, to be charged per ton of 40 cubic feet	1 8
" in casks or case of 2 doz. or under	0 2		
Sarsaparilla, the case	0 2	OUTWARD WHARFAGE RATES.	
Sashes, window, per pair	0 1	One-half of the foregoing Inward Wharfage Rates to be levied on goods shipped outwards.	
Seltzer or Soda Water, per doz.	0 1	When smaller packages, subject to a specified rate under this tariff, shall be enclosed or so fastened together as to form a larger package, it shall be lawful to levy the prescribed rate on each package of which the said larger package is composed. Goods contained in iron tanks excepted.	
Shale, per ton	0 10	When goods chargeable by weight under the foregoing tariff shall be in form, or so packed that the measurement tonnage shall exceed the weight tonnage, it shall be lawful to charge the wharfage rate by measurement.	
Shocks, the bundle	0 2	THIRD SCHEDULE.	
Shot, package 224 lbs. and under	0 1	Free Lay Days	
" additional for each cwt., or fractional part	0 1	During which vessels fully laden discharging their cargoes at any public or private surffiance wharf are exempt from the payment of tonnage rates.	
Skins, loose, per doz.	0 2	For vessels not exceeding 100 tons register	
" in bales	0 8	Exceeding 100 tons and not exceeding 200 tons register	
Slops, the package	0 9	" 200 " " " " "	
Soap, package 112 lbs. and under	0 2	" 300 " " " " "	
" additional each cwt.	0 1	" 400 " " " " "	
Soda Crystals	0 4	And for every additional 100 tons, or fractional part of 100 tons	
Soda Caustic } per package..		Excluding Sundays and public holidays in every case	
Spades, Shovels, Forks, per doz.	0 2		
" in case or crate	1 0		
Spelter, the ton	1 8		
Starch, boxes of 56 lbs. and under	0 2		
" for each additional 56 lbs. or fractional part thereof	0 1		
Stationery, the package..	0 9		
Teel, the ton	1 8		
Teds, in bags, each	0 2		
" in casks or case	0 4		
Sewing Machines, per package	0 4		
Spices, the package	0 2		
Silks, per package	0 9		
Sheathing Metal, per cwt	0 1		
Sugar, in mats, bags, or baskets, per ton gross	1 8		
" in casks or case, per ton gross..	1 8		

We possess the largest Funeral Plant in Australia

Telephone 48.

P. O. Box 164.

ESTABLISHED 1837.

John Sands,



374 GEORGE STREET,
SYDNEY.

Letterpress Printer and

Manufacturing Stationer.

Account Book Manufacturer.

Lithographic Color Work.

Labels and Show Cards.

METAL, TIN & ZINC PRINTING—A Speciality.

374 George Street, Sydney.

ANTHONY HORDERN'S FOR GAY SPANGLES AND HANDSOME BANGLES.

FIRMS WITH FIXED PAY DAYS.

1959

FIRMS WITH FIXED PAY DAYS.

Aarons' Exchange hotel Co., Ltd.	4th Friday	Australian Mortgage Land and Finance Co., Limited ..	Any day
Abigail O. J. ..	Any day	Australian Mutual Provident Society ..	Wednesdays
Abrahams Mark and Son ..	Friday	Australian Roller Flour Mills ..	Every Friday, 10 to 12
Abraham John S. ..	20th	Australian Star Newspaper ..	Any day
Acetylene Gas Co. of Australasia	3rd Wednesday after 3	Ayers Henry and Co. ..	Last Friday
Adams G. H. and Co., Limited ..	17th	Ayton Thomas H. ..	19th
Adams H. and Co. ..	28th, 10 to 12		
Adams William and Co., Ltd. ..	Last Friday, 3 to 5		
Adelaide Steamship Co., Ltd. ..	Every Thursday		
Aikhurst Walter and Co. ..	27th	Babcock and Wilcox, Limited ..	Any day
Ailbion Stores—John See and Co.	Thursday afternoon after 16th	Baker and Rouse Proprietary, Ltd.	Last Thursday, after 4
Alcock Brothers ..	16th, 11 to 4 o'clock	Baker, O. M. and Son ..	2nd
Alderson Fred and Co. ..	28th	Balchin W., Limited ..	4th Wednesday, 3 to 5
Alldreding F. and Son ..	1st Wednesday	Balmain New Ferry Co. ..	Last Friday
Alliance Marine and General Assurance Co., Limited ..	Wednesday	Balmain Steam Ferry Co., Ltd. (in liquidation) ..	4th Friday
Alston Scap and Candle Manufacturing Co., Ltd. ..	Last Friday	Banks Charles and Co. ..	Last Thursday
American Corset Co. ..	Last Thursday	Bannister and Co. ..	Last Thursday, 3 to 5
American Tobacco Co. of N.S.W., Ltd. ..	Any day	Bardsley John and Co. ..	1st Monday after 15th
Ames J. and Sons ..	Last Saturday	Barlow John and Co. ..	2nd, 3rd and 4th Mondays, 2.30 to 5.
Anderson and Co. ..	Every Tuesday		
Andrews, Moseley and Manning ..	Every Saturday	Barnett Leopold and Co. ..	Every Friday after 2
Andrew John and Co. ..	Last Wednesday	Barrell Brothers ..	Any day
Andrews and Cook ..	30th	Bath Charles and Co. ..	2nd and 4th Tuesday, 3 to 4
Anglo-Swiss Condensed Milk Co.	27th	Batson and Co., Limited ..	Last Thursday, 3 to 5
Angus and Son ..	15th	Batt, Rodd and Purves ..	Last day
Annapdale, Balmain and Glebe Point Co-operative Steam Ferry Co. ..	Last Friday	Beale and Co. ..	Fridays
Argyle Biscuit Factory ..	Any day	Beard, Watson, and Co. ..	15th of month, 3 to 5
Argyle Bond and Free Stores ..	Any day	Bean W. H. and Co. ..	15th
Ariel W. H. and Co. ..	4th Thursday	Bebarfeld B. and Co. ..	3rd Saturday
Arkell and Douglas ..	Any day	Betty and Todd ..	Last Thursday
Arnold G. ..	Any day	Begg and Greig ..	1st Saturday
Arnott's Biscuit Depot ..	15th	Bell H. C. ..	Any day
Aronson F. and Co. ..	4th Thursday	Bellambi Coal Co. Proprietary, Limited ..	Last Saturday
Arthur and Co., Ltd. ..	Last day	Bennett and Speechley ..	Last Thursday
Ashwin F. and Co. ..	From 15th to 25th inclusive	Bennett S. and Co. ..	4th Monday
Ashwood J. F. ..	End of month	Bennett and Wood, Limited ..	25th, after 3
Atcherley and Dawson ..	After 15th	Bennie, Teare and Co. ..	Last Thursday
Atkins W. and Co., Ltd. ..	Last Friday, cheques posted	Bensusan E. and A. ..	Any day
Atterton and Co. ..	3rd Wednesday	Bergl Australia, Limited ..	Last Friday
Austral Cycle Agency ..	Any day	Bergl M. and Co. ..	Last Friday
Australasian Agency (The) ..	Any day	Bernard D. ..	Last day
Australasian Incandescent Gaslight Co., Ltd. ..	Any day	Berrima District Cold Climate Farm and Dairy Co., Ltd. ..	20th
AUSTRALASIAN INSURANCE AND BANKING RECORD Office ..	Last Friday	Berry Henry and Co. ..	15th
AUSTRALASIAN PASTORALISTS' REVIEW ..	Every Saturday	Betz F. and Co. ..	Any day
Australasian Incandescent Light Co., Limited ..	Any day	Biddell Brothers, Ltd. ..	Any Tuesday or Friday
Australasian Investment Co., Ltd.	Any day	Bills Bros. ..	15th
Australasian Mortgage & Agency Co., Limited ..	Any day	Blonie R. and H. ..	Saturday
Australia hotel ..	3rd Friday	Bird H. F. and Co. ..	1st Monday after 20th
Australian Alliance Assurance Co.	Every Friday	Birks G. Fred. ..	3rd Wednesday
Australian Bond ..	Last Friday	Birt and Co., Ltd. ..	Every Wednesday
Australian Club ..	3rd Thursday	Blackwood James and Son ..	Last Friday, after 2
Australian Dairying Co., Ltd. ..	25th	Blashki A. ..	Any day
Australian Drug Co., Limited ..	1st Thursday	Blythe David and Co. ..	Last Thursday
Australian Express Co. ..	Any day	Boar's Head Wine Co. ..	Any day
Australian Gaslight Co. ..	Monday	Bond S. B. ..	Last Tuesday, 2.30 to 4.30
Australian Jockey Club ..	1st Friday	Bonner J. and Sons ..	Last Friday
Australian Kerosene Oil and Mineral Co., Limited ..	Wednesday afternoon	Bonington and Co. ..	Last Thursday
Australian Paper Co. ..	15th	Booth J. and Co., Limited ..	Last Friday, at Balmain
		Borthwick A. and G. ..	Last Friday afternoon
		Borsdorff and Co. ..	15th
		Bosch, Barthel and Co. ..	Any day
		Boulton F. C. ..	First Wednesday
		Bown Thomas J. and Co. ..	Last day
		Boyd and Hanton ..	3rd Thursday
		Bradley Walter and Co. ..	Any day
		Bradstreet Co. ..	Any day
		Braham David and Co. ..	15th

WOOD & COMPANY, Undertakers & Embalmers, 7 Norton St., Leichhardt. Tel. 40, Petersham

ANTHONY HORDERN & SONS, UNIVERSAL PROVIDERS, HAYMARKET (ONLY), SYDNEY

1860

FIRMS WITH FIXED PAY DAYS.

Bramwell J. and Co.	30th June, 30th December	City Carrying Co.	4th Tuesday
Brandt Bros.	Last Wednesday	Clarke and Co.	After 26th, 3 to 5
Bridge John and Co.	15th	Clarke and Co. (14 Pitt st)	Last Friday
Briscoe, Drysdale and Co.	Last Friday, after 3	Clarke Thomas	23rd
British and Australasian Trust and Loan Co., Limited	Tuesdays and Fridays	Clarke W. W.	Last Friday, 2 to 4
British Pianoforte Depot	3rd Saturday	Clarke W. S. and Son	Any day
British Tea Co.	15th	Cliff F. E. and Co.	15th
Broad E. F.	Last Friday after 3	Clifford, Love and Co.	Any day
Brodziak A. M. and Co.	Last Friday	Close, Scroggie, and Co.	Any day
Bromwich J. J.	Any day	Clyde Engineering Co., Ltd.	Last Thursday
Brook Jonas and Bros.	15th	Cocks Arthur and Co.	20th
Brooks Henry and Co.	Any day	Cohen David and Co.	Thursday morning, after 15th, 10 to 12
Brooks William and Co.	Last Wednesday	Collier Thomas and Son	Any day
Broomfield John	Last Saturday	Collins Brothers and Co.	3rd and 4th Friday
Broughton Ernest C. V., J.P.	Last Wednesday	Colonial Mutual Life Assurance Society, Limited	Every Friday
Brown and Brown	Last Thursday	Colonial Paper Co., Limited	Last day
Brown and Co.	Every 3rd Friday, after 3	Colonial Sugar Refining Co., Ltd.	Every Saturday
Brown J. and A.	After 21st	Commercial Building and Investment Co., Ltd.	Every Thursday
Bruck L.	Any day	Commercial Publishing Co.	Last Friday
Bruntan and Company	Every Friday, 10 to 12	Commercial Travellers' Association of N.S.W.	2nd Tuesday
Brush Electrical Engineering Co., Ltd.	20th	Compagnie des Messageries Maritimes	Tuesdays
Brush John, Son and Co.	Any day	Connell John and Co. Proprietary, Ltd.	4th Friday, after 3
Buckland Brothers	Any day	Cook Thomas and Son	Any day
Budd and Ferns	Any day	Cook W. S.	15th
Budge James	4th Monday, before noon	Cooke M. C. and Co.	15th
BUILDING AND ENGINEERING JOURNAL	Any day	Cooper, Nathan and Co.	3rd Saturday
BUILDER Printing Works	Any Saturday	Co-operative Delivery Co.	Any day
Bull Henry and Co., Limited	15th	Corbett C.	15th
Bull J. A. and Co.	25th, 2.30 to 4.30	Corbin and Nicolle	3rd Saturday
BULLETIN Newspaper Co.	Last Tuesday	Cormack Alexander W.	20th
Bull Coal Mining Co.	Any day	Cornish and Co., Limited	25th
Bullivant's Australian Company, Limited	2nd and 3rd Saturdays	Cornish Edmund	25th
Bullough J. R. and Co.	15th	Corrigan B. M.	Last Saturday
Burgon and Ball, Ltd.	Last Friday	Cosmos Apothecaries Co.	20th
Burgon Sheep-shearing Machine Co.	Last Friday	Courrier Australien	2nd Saturday, 10.30 to 12
Burke Edward and John, Ltd.	Any Saturday, 10 to 12	Cowan Alex. and Sons, Ltd.	Any day
Burnett and Oswald	After 25th	Cowan W. and B.	Any day
Burns, Philip and Company	3rd Thursday, 11 to 4	Cowles and Dunn	Any day
Burns S. A. and Co.	Last Thursday	Cowlishaw Brothers	Mondays and Fridays, 10 to 11
Burroughs, Wellcome and Co.	Last Thursday	Cox and Moller	15th
Burrows Henry	Any day	Craddock George and Co.	3rd Thursday
Bush W. J. and Co., Limited	Last Saturday, 10 to 12	Craig and Aitken	Last Friday
Bush E. D.	Every Saturday	Crampton C. E.	Last Saturday
Butler Edward and Sons	Every Wednesday, 10 to 11	Crane G. E. and Sons	Last Friday
Buzacott and Co.	21st	Craven Thomas W.	Every Thursday, 3 to 5
Buzacott G. S.	Any day	Crompton and Co.	Any day
Byrnes Bernard	Any day	Crown Bromide Enlargement Co.	25th, after 10
Cadbury Brothers	3rd Thursday	Cropley John and Son	Every Monday
Cafrd, Maxwell and Co.	Thursday	Cull G. and Son	Any day
Callaghan and Son	10th	Culver Edward	3rd Tuesday
Cameron and Cameron	Last Friday, 2 to 4	Cunningham James	Mondays
Cameron Brothers and Co.	4th Wednesday	Cunningham F. and Co.	31st
Cameron John and Co.	Any day	Currier, Adet and Co.	Any day
Cameron R. W. and Co.	Any day	DAILY COMMERCIAL NEWS	Last Friday
Cameron W. M. and Co.	25th, after 3	DAILY SHIPPING NEWS Co., Limited	Any day
Campbell J. A. and Co.	Any day	DAILY TELEGRAPH Newspaper Co., Ltd.	Any Friday, after 2
Campbell and Kinsela	Last Thursday	Dalgaty and Co., Limited	Tuesdays and Fridays, 11 to 1, after 15th
Campbell W. W. and Co.	27th	Dalton Brothers	3rd Thursday, 11 to 1
Capital Oil Engine Co.	Last Saturday	Dalwood and Co.	Last Thursday
Carley H. W. and Co.	Every Saturday	Danger, Gedy and Co.	Any day except Tuesday and Saturday
Carlaw John	Any day	Danks John and Son, Proprietary, Limited	Last Thursday, 2 to 4
Carson William	Every Saturday	D'Arcy O. and Co.	4th Thursday morning, 10 to 1
Cary William and Sons	Last Wednesday	Dare Henry A.	Any day
Carter Alfred	Last Friday	Davenport Bros.	Last Thursday
Carter J. G.	Any day	Davenport and Co.	Last day
Central Agency	Any day	Davidson Bros.	15th
Channon James	Friday, 3 to 4	Davidson and Co.	15th and 30th
Chapman and Co.	Last Friday, 2 to 5	Davies and Felton	Last Thursday
Chapman Edward and Co.	Any day	Davies J. and Co.	Any day
Chard W. H. and Co.	Any day	Davis O. and Co.	15th
Chipman Holmes S.	Last Friday		
Chown Bros. and Mulholland	Last Thursday		
Chubb's Australian Co., Ltd.	Any day		
Circular Quay Bonded Stores	Last Thursday		
Civil Service Co-operative Society of New South Wales, Limited	All cheques posted		
Civil Service Mutual Building and Investment Society, Ltd.	3rd and 4th Thursdays		

ANTHONY HORDERN'S FOR DOOR LATCHES AND WINDOW CATCHES

FIRMS WITH FIXED PAY DAYS.

1861

Davis T. O. and Son	After 20th	Farmers' and Dairymen's Refrigrating Co.	Every Wednesday
Dawbarn E. A. and Co.	Last Friday, 2 to 5, post cheques	Farrell Robert and Co.	Third Thursday
Deacon and Co.	Any day	Featherstone and Co.	28th
Dean Alexander and Sons	End of month	Federal Timber Co.	Last Friday, 2 to 3
Debenham and Freebody	Any day	Feldheim, Gotthelf and Co.	Last two Thursdays, after 3
Delarue H. F. and Co.	Last Friday	Fell Alex. M. and Sons	26th, 2 to 5
De Lissa M. and Co.	Last Thursday, 3 to 5	Ferrari A. and Co.	Any day
Denham Brothers	On and after 20 h	Fesq and Co.	Last Thursday, 3 to 5
Dennett and Makin	4th Monday	Fieid Joseph	First Thursday
Donovan, Gibson and Co.	2nd Wednesday	Finckh E. V. and Co.	15th
Dent and Perry	2nd & 4th Tuesday, 3.30 to 5	Finckh H. and K.	10th
De Saxe J. and Co.	15th	Finn Bros.	Last Friday
Derbyshire, Molden, and Budden	Friday	Firth P. J.	15th
Deutsch Australische Dampfschiffe Gesellschaft	Friday, after steamer's dep.	Fisher and Co.	Last Friday after 3
Dillon, Burrows and Co.	Last Friday after 3	Fisher and Lingham	15th
Direct Agency Anticuta Co	15th	Flavelle Bros., Ltd.	Any day
Dixon Thomas	Last Saturday	Fleming William	Last Friday
Dixon and Sons, Ltd.	Thursdays, 10 to 12	Flood and Co., Ltd.	Second Tuesday
Dobbie J. H.	Any day	Foley Bros.	Any day
Dobell W. and Co.	Any day	Foley O. W. and Co.	Third Monday
Dobroyde Nursery Co.	2nd Wednesday	Foley J. and Co.	After 25th
Docker Bros., Ltd.	Last Friday	Ford, Adams and Co.	Any day
Docker William, Ltd.	Any day	Foreign Agency, The	Last Friday, after 3
Dose Henry	Every Saturday	Forsberg C. J. E.	15th
Douglas Percy and Co.	3rd and 4th Friday	Forster S. and Sons	Any day
Douglas W. C.	14th	Forsyth A. and Co., Limited	23rd
Doust Isaac	15th	Forsyth James and Sons	25th
Drow Brothers	23rd	Forsyth, Schultz and Co., Limited	Last Thursday, 3 to 5
Drew and Brawn	Any day	Forster and Son	On and after 15th
Dudley T. R. and Co.	Any day	Foster and Son	Last Thursday
Duguid and Co.	Any day	Fox Bros.	Any day
Dunlop Pneumatic Tyre Co., Ltd.	Last day, after 3	Fox E. T. and Co.	15th
Dunn H. T. and Co.	Last Wednesday	Foy Mark	Every Thursday
Dunn E. W. T.	Any day	Francart E. and Co.	Any day
Dykes John	1st Friday	Fraser, Uther and Co.	Every Friday afternoon
Dyuan John, Son, and Co.	Any day after 23th	Friedman A.	4th
		FRIEDMAN'S JOURNAL	Every Friday after 2
East and Clune	Last Friday	Freeman S. and Sons	4th Thursday
Eastway Brothers	Last Friday	Freshman and Co.	10th
Eaton, Grant and Co., Ltd.	Last Thursday	Friend W. S. and Co.	Thursday, 10 to 1
"Eden" Photo Studios	1st	Frossard, Lovic and Co.	Saturdays
Edge and Edge	3rd Thursday	Fry J. S. and Sons, Ltd.	3rd and 4th Friday, 2 to 5
Edginton T. and Co.	3rd Thursday, 2.30 to 5 p.m.	Fuerth and Nail	Any day
Edison and Swan United Electric Light Co., Limited	Any day	Fuhrmann and Co., Ltd.	Any day
Edmondson John and Co.	Last Friday	Fulford C. E. and Co.	Last Friday
Edwards and Co.	Last Friday	Fuller S. H.	Any day
Edwards, Dunlop and Co. Limited	Last Saturday	Funk T. C. and Co.	Any day
Edwinton E. R.	Any Saturday	Furner F. O.	4th Thursday
Electro Photo Engraving Co. of Australasia, Ltd.	Last Wednesday	Gaghardi F. and Co.	Last Thursday
Elliott Brothers, Limited	3rd and 4th Thursdays	Gardiner W. and Co.	15th, 3 to 5
Elliott Thomas and Co.	Any day	Garrikan I Co.	Last Saturday
Ellis J. C.	Any day	Gavin Gibson and Co., Ltd.	25th, after 3
Elvy and Co.	Friday, 10 to 4	Gelding J. and W.	Last Friday
Elmer W. B. and Co.	Last Saturday	Gerber, Michaut and Co.	28th
Empson Son and Ltd.	20th, after 3	German-Australian Steamship Co.	Friday, after departure of steamer
Ennever and Appleton	20th and after	Ghest Captain R. O.	1st
Epworth Printing and Publishing House	20th	Gibbs, Bright and Co.	Shipping accounts, every Monday, 10 to 1
Equitable Life Assurance Society of United States	Every Wednesday		General accounts, every Friday, 10 to 1
Eve James	15th	Gibson, Battle and Co.	3rd Saturday, 10 to 12
EVERING NEWS	3rd Thursday, 3 to 5	Gibson Gavin and Co.	Any day
Evers J. T. and Co.	15th	Gibson J. A. D. and Co.	2nd Monday
Excelsior Manufacturing Co.	Any day	Giechist, Watt and Co.	Every Friday afternoon
		Giechist David	Last Thursday
		Gilkes, Massey and Co.	15th
Faire Bros. and Co.	21st, after 3	Gillespie Brothers and Co.	20th, 2 to 4
Fairfax John and Sons	Last Wednesday, 1 to 5	Gillespie John and Co.	Last Thursday, after 3 p.m.
Fairfax and Roberts	Last Saturday	Gillies James	Last Friday
Falk J. I. and Co., Ltd.	Any day	Gillies Robert	Any day
Fallon Brothers	Any day	Glebe Council	Every 2nd Friday, 2 p.m.
Fallon M. and E.	Any day	Glen W. H. and Co.	Last Friday
Fallon J. T.	Any Saturday	Glenfield J. W.	Last Friday
Falstedt O. A.	Any day	Globe Carrying Co.	Any day
Farleigh, Nettheim and Co.	Wednesday afternoon	Godwin G. W.	3rd Tuesday
Farleigh E. M.	Any Thursday	Goldsbrough, Mort and Co.	Any day
Farmer and Co., Ltd.	15th	Goldschmidt Julius and Co.	15th
Farmers' Co-operative Co. of N.S.W., Limited	Last Thursday	Gollin and Co.	Friday afternoon, after 2
Farmers' and Dairymen's Milk Co. Limited	Last Thursday	Gommessen G. and Co.	Any day
		Goodall T. M. and Co.	25th
		Goodiet and Smith, Ltd.	Last Thursday, after 3

Goodwin Henry	3rd Wednesday, 3 to 5	Hepworth's, Limited	15th
Goold Bicycle Co., Ltd. .. .	15th	Hermann Erhard and Co. .. .	15th
Gordon and Gotsch	3rd Thursday	Heron William	15th
Gowing Brothers	15th	Hervey R. A.	Any day
Grace Brothers	15th and 30th	Hess J. and Co.	15th
Grafton Wharves and Warehouses	Saturdays	Hetton Coal Co., Limited .. .	Any day
Graham H. M.	Any day	Heyde, Tolman and Co. .. .	Last Friday
Grand Central Coffee Palace Co.,	Any day	Hickey W. J. and Sons .. .	15th
Limited	3rd Friday	Hill, Clark and Co.	Any day
Graves Warlen Harry and Son ..	Any day	Hill, Dickinson and Co. .. .	Last Friday
Gray Arthur and Co.	15th, 10 to 12	Hill W. H. and Co.	Any day
Gray Bros.	Second week	Hillier Harry	Last Thursday
Gray and Gray	27th	Hinchcliff, Holt and Co. .. .	Any day
Gray John W. and Co.	Last Thursday, 3 to 4	Hird George and Co.	15th
Graziers' Meat Export Co. of	Any day	Hodge and Zlotkowski .. .	Last Friday
Queensland	Last Tuesday	Hoffnung S. and Co.	Last Thursday
Grear H. and W.	Any day	Hogan Bros.	Fourth Thursday
Greatrex Charles and Son .. .	Last Thursday	Hogg, Robinson and Co. .. .	Saturday, 10 to 12
Green Henry	Any day	Holdslop and Co.	25th
Green T. and Co.	Last Friday	Holdsorth, Macpherson and Co.	Last Friday, 3 to 5
Gregory H. P. and Co., Limited	Last Friday	Hollander and Govett .. .	25th, after 3
Gregory Albert	Last Thursday, after 4	Holle J. F. and Co., Limited	Fridays
Greville's Telegram Co. .. .	Any day	Holt-Sutherland Estate Land Co.,	Any day
Greville Turner, Ltd.	Last Tuesday	Limited	Last Friday
Griffiths Bros. Proprietary, Ltd.	2nd Thursday	Home Rule Tobacco Co. .. .	15th
Griffiths H. and A. A. .. .	2nd Wednesday	Hopkins and Lipscombe .. .	15th
Griffiths W. S.	15th	Hooper and Harrison .. .	15th
Grimley Frank	15th	Hordern Anthony & Sons, Palace	Any day
Groth H. H. and Co.	3rd Wednesday	Emporium	15th
Groves and Co.	15th	Hordern Brothers	15th
Gummow F. M. and Co. .. .	28th	Hordern Edward and Sons ..	15th
Guthridge N., Ltd.	Last day	Hordern Percy	15th
Guthrie Robert	25th	Horton E. and Co.	2nd Thursday
Guyatt and Co.	15th	Horwitz M. H.	Any day
		Hoskins G. and C.	4th Thursday, 2 to 5
		Hoskins W. and Son	25th and after
		Hotel Metropole	4th Friday
		Houlder Bros and Co., Ltd. ..	Every Friday
		Houston William	25th
		Howard and Co.	15th
		Howard J. and C.	Last Friday after 2
		Howes and Howes	15th
		Huddart, Parker and Co., Pro-	Any day
		prietary, Ltd.	After 25th
		Hudson P. W. and P.	Any day
		Huet and Huet	2nd Tuesday, 11 to 4
		Hunt Richard and Co.	15th
		Hunt W. A. and Co.	Any day
		Hunter D. R. and Son	Last Thursday
		Hunter John and Son, Limited	21st
		Illawarra S.N. Co.	Any day
		Isley, Doubleday and Co. .. .	After 15th
		Imperial Manufacturing Co., Ltd.	Any day
		India Rubber, Gutta Percha and	Any day
		Telegraph Works Co., Ltd. ..	Last Thursday
		Inglis James and Co., Ltd. .. .	4th Thursday, after 2
		Inglis, Robson and Co.	Any day
		Inglis William and Son .. .	Any day
		Innes and Co.	Any day
		Intercolonial Investment Land	Any day
		and Building Co., Ltd. .. .	3rd Friday
		Ivanhoe Lime and Cement Works	Any day
		and Colliery	4th Thursday
		Ives Isaac E.	Any day
		Jacobs Nathan	15th
		Jamieson H. H. and Co. .. .	Last Thursday
		Jackson John	Every Friday
		Jaffray G. Wighton	Last Thursday
		Jaffray John W.	Last Friday, 2 to 5
		James and R. and P. Cycle Agency	Last Friday
		Jarvis C. and Son	Last Thursday, 3 to 5
		Jay Samuel	Any day
		Jepson Bros. and Co.	15th
		Jewell, Davis and Co.	Last Friday, after 3
		Johnson and Sons	Last Thursday
		Johnson, Clapham and Morris, Ltd.	Last Friday
		Johnson, Munter, Simpson and Co.	Any day
		Johnson and Vickers	Any day
		Johnston J. Barre and Co. .. .	1st & last Friday, 2 to 4.30
		Johnston J. W. and Co. .. .	20th
		Johnstone and Co.	Last Friday
		Jones Bros.	Any day

Jones John	Any day	Ludowici J. C. and Son, Limited ..	Last Friday
Jones David and Co.	12th, 10 to 5	Lukey and Nicklin	15th, 12 to 4
Jones T. and Co.	28th	Lysaght Brothers and Co., Ltd. ..	15th, after 2
Jones T. T. and Sons	Every Friday		
Jonnes and Co.	Any day		
Jony E.	Every Tuesday	McArthur W. and A., Ltd. .. .	15th, 3 to 5
Jordan and Rogers	Last Friday	McCurran, Stewart and Co. .. .	Last day, 10 to 11
Joseph S. A. and Rickard, Ltd. ..	25th	McCarthy and Co.	Any day
Jouve A. and Co.	Any day	McClennan and Roach	3rd Tuesday
Joyce Brothers	15th	Macdonald Robert and Co. .. .	Last Friday
		McDonald Alexander	After 15th
		McDowell and Hughes	15th
		Mace, Macarthur and Co. .. .	4th Tuesday
		McEvoy John and Sons	15th
		McEwan James and Co.	25th
		McGlew and Muston	28th
		Macintosh John and Sons .. .	Cheques posted
		Mackenzie George and Co. .. .	Last Thursday, from 2.30
		McKeown W.	20th
		McKinlay Alexander and Co. ..	Any day
		McLachlan Andrew	Last Thursday
		MacLardy W. R. and Co. .. .	27th
		McLean Brothers and Rigg, Ltd.	Last Monday
		MacMahon John T.	Any day
		MacMahon Patrick	Wednesdays, 2 to 2.30
		McMurtre and Co., Ltd. .. .	3rd Thursday, 3 to 5
		McNamara and Smith	4th
		Macnamara Henry	Any day
		McPherson Thomas and Son .. .	Last Thursday
		McSweeney Justin	Last Friday, 2 to 5
		McRae Company	Any day
		MacWilliam and Denovan .. .	Last Wednesday, 10 to 1
		Madden and Hixson	Any day
		Maddock C. W. and Co. .. .	Any day
		Magnus S. J.	Any day
		Maiden Brothers	Any day
		Mallier J. S. and Co.	Any day
		Mainwaring Brothers	Any day
		MARRIAND MERCURY	Any day
		Makower M. and L. and Co. ..	15th
		Malcolm Brothers	Last Friday
		Mammatt and Sons	Any day
		Manchester Manufacturing Co. ..	15th
		Mann, Byars and Co.	Any day
		Manley Thomas R.	Any day
		Mansfield G. Allen	1st
		Mappin Brothers	Any day
		Marchant and Co.	22nd
		Marcker L. W. and Co.	3rd Wednesday
		Markell Charles and Co. .. .	Any day
		Markwald Henry	Last Friday, 3 to 5
		Martin, Hall and Co., Limited ..	Last Saturday
		Martin James and Co.	Last Thursday, 11 to
		Martin and Burney	Last day
		Martin and Martin	Last Friday
		Massey-Harris Co., Ltd. .. .	Last Saturday
		Mason Brothers, Limited .. .	Last Wednesday
		Mason J. Stuart	Every Wednesday
		Massey and Co.	20th
		Mason Frederick	4th Thursday
		Mathews and Co.	1st
		Maurer H. and Co.	Last Friday
		Mauri Brothers and Thomson ..	Last Friday, 3 to 5
		Maxwell O. F. (Hayes Bros.) ..	4th Wednesday
		Maxwell J. J. J.P.	After 20th
		Mayer John Henry	Last Friday
		Mayer S. & Co.	Last Friday
		Mendowbank Manufacturing Co. ..	Last Friday
		Meredith Brothers	End of month
		Messageries Maritimes	Tuesdays
		Messmer, Vonwiller and Co. .. .	Any day
		Metayer R. and Co.	Last Friday, 3 to 5
		Metcalfe and Barnard	21st, afternoon
		Metcalfe's Bond	Any day
		Metcalfe M. and Co.	Any day
		Metropolitan Coal Agency .. .	Last Saturday
		Metropolitan Ice and Cold Storage	Any day
		Co., Limited	Last Thursday
		Metropolitan Mutual Perm. B.	Any day
		and I. Assn., Limited	Every Saturday
		Miles W. H.	Last Friday
		Miller Robert	Last Thursday, 3 to 5
		Mills J. H. and Sons	Tuesday
		Milne Brothers	Last Monday, after 3
		Mitchell and Co.	Last Friday

Mitchell D. and Co...	Thursdays, after 12th, 2 to 4	Nolan Charles	15th
Modini G. B.	15th	North China Insurance Co. ..	Thursday after 20th
Mofflin, Rickards and Co., Ltd.	Thursdays	North Coast Steam Navigation Co., Ltd.	4th Thursday
Moir James and Co. ..	1st Thursday, after 20th	North Queensland Insurance Co., Limited	Every Tuesday
Moloney J. J. and Co. ..	Last Thursday	Northern Insurance Co. ..	Any day
Moore A. H. and Co. ..	3rd Thursday	Norton, Smith and Co. ..	Any day
Moore J. A. and Co. ..	2nd & 4th Thursdays, 3 to 5	Noyes Brothers	Last Thursday, 2 to 4
Moore T. and Son	2nd and 3rd Tuesday		
Moreau H. & Co.	16th	Oceanic Publishing Co., Limited	Last Thursday
Morgan and Co.	Any day	Odling, Anselm and Sons ..	Last Friday
Morgan and Smith ..	Last Friday	Oertel Charles	Last Saturday
Morgan, Smith and Whybrow	Last Friday	O'Hagan Francis and Co. ..	Any day
Morris Augustus and Co. ..	2nd Saturday	On Chong and Co.	15th and after
Morris Brothers	2nd last Thursday	Orient Line Royal Mail Steamers	2nd Tuesday after departure of each mail steamer
Morrisett Coal Mining Co. ..	Any day	Oriental Tea Co. Proprietary, Ltd.	Last Tuesday, 10 to 1
Mort's Dock and Engineering Co., Ltd.	Any day	Orme, Kelgwin and Co. ..	3rd Saturday, 10 to 11
Moseley D. and Sons	Any day	Osborn and Jordan ..	25th
Moss Moss and Co.	Every Tuesday, 3 to 5	Ostermeyer, Dewez and Van Rompaey	Last Friday
Mount Kembla Coal and Oil Co. ..	4th Friday	Overall and Overall	Any day
Mount Pleasant Coal and Iron Co., Limited	23rd	Owens Albert H.	Any day
Mountcastle B. & Sons ..	15th		
Moxham George H. and Co. ..	Any day	Pacific Islands Co., Ltd. ..	1st and 3rd Friday
Moxham W. J. and Co. ..	3rd Tuesday	Paisley William and Co. ..	15th
Muir D. R.	Last Saturday	Palatine Insurance Co., Ltd., of Manchester	Any day
Mullens D.	Any day	Palling W. H. and Co. ..	1st
Murdoch James A. ..	15th	Palmer F. J.	15th
Murray George and Co., Limited	Last Friday	Palmer Joseph and Son ..	Tuesday
Murray Brothers	Mondays	Parbury, Heuty and Co. ..	Every Thursday, 10 to 1
Murray D. S.	Last day	Parlsand Co.	Any day
Murrell Bros.	Last Thursday	Parke and Lacy Co., Ltd. ..	15th
Murrell A. and Co. ..	Last Thursday, 3 to 5	Parker Bros.	Any day
Mutton J. R. (late R. Slee)	Any day	Parramatta River Steamers and Tramway Co., Limited ..	25th
Mutual Plate Glass Insurance Co.	Last day	Parry Edward	Any day
Mutual Life Association of Australasia	1st	Parry J. and Co.	Any day
Myers and Solomon	4th Thursday, 11 to 4	Parsons Brothers and Co. ..	Last Thursday
		Pastoral Finance Association, Ltd.	Any day
Naimol Pastoral Co., Ltd. ..	Tuesdays and Fridays	Patent Asphaltum Co. of N. S. W., Limited	Last Tuesday, after 2
National Cash Register	25th, 2 to 5	Paterson, Hill and Smith ..	3rd Friday
National Fire and Marine Insurance Co. of New Zealand ..	Any day	Paterson, Laing and Bruce, Ltd.	15th, after 3
National Mutual Life Association of Australasia, Limited ..	Last Wednesday	Patterson and Ruhfus ..	10th
Natural Food Manufacturing Co.	4th Thursday	Peabody Henry W. and Co. ..	Any day
Naylor and Co.	Any day	Paul and Sullivan	Any day
Nelson A. D. and Co. ..	Last Wednesday	Paul E. and W.	3rd Wednesday, after 2
N. S. W. City and Suburban Gas Consumers' Protective Association ..	Last Saturday	Peapes and Co., Ltd. ..	15th
N. S. W. Creamery Butter Co., Ltd.	Last Thursday	Pearson Bros.	Any day
N. S. W. Club	Last Wednesday	Peel, Pain and Co.	Any day
N. S. W. Cricket Association ..	3rd Friday	Peele and Co.	Every Monday
N. S. W. Fresh Food and Ice Co., Limited	Last Saturday	Pemell James	Last Monday
N. S. W. Lager Bier Brewing Co., Ltd.	25th	Penfold W. C. and Co. ..	20th
N. S. W. Magic Soap Co. ..	Last Friday	P. and O. Steamship Co. ..	1st, 3rd and 4th Wednesday
N. S. W. Mount De Plé Deposit and Investment Co., Limited	Any Thursday afternoon, 2 to 4	Penny W. F. and Co. ..	22nd
N. S. W. Shale and Oil Co., Ltd. ..	Every Friday afternoon	People's Prudential Benefit Society, Ltd.	1st Thursday
N. S. W. Wagon Co.	Any day	Pepperday W. A. and Co. ..	Last day
Newcastle and Hunter River Steamship Co., Limited ..	4th Wednesday, 9 to 12	Perdrin and Co.	25th, 3 to 5
Newcastle Wallsend Coal Co. ..	3rd Saturday	Permewan, Wright and Co., Ltd.	Last Friday, 3 to 5
Newport J. E. Sons and Co. ..	Any day	Peters Frederick A.	20th
Newton Joseph	Any day	Petersen, Boesen and Co. ..	15th
New York Life Insurance Co. ..	Last Friday	Pfahler's hotel	1st and 2nd Friday
New York Novelty Co. ..	15th	Phillips B.	Any day
New Zealand Loan and Mercantile Agency Co., Limited ..	Last Thursday, after 2	Phippard Bros.	27th
Nicholson and Co.	Last Friday	Phizackerley I.	Last Wednesday
Nicoll George W.	4th Thursday	Phoenix Assurance Co. ..	Any day
Nielsen N. P. and Co. ..	Last Friday	Pickles Joseph and Son ..	15th
Nolan, Time and Co. ..	28th	Pitt, Brown and Co. ..	Saturdays
North German Lloyd	General accounts, 10 to 1; Ship accounts 2nd Friday after departure of mail steamer	Pitt, Son, and Badgery, Limited	Any day
		Plummer and Owen	25th
		Plummer, Love and Co. ..	Last Thursday, 10 to 12
		Poole and Holmes	1st Saturday after 18th
		Pope John and Co.	3rd Wednesday
		Port Jackson Steamship Co. ..	Friday
		Potts and Paul	Last Thursday, 9.30 to 11
		Pratten Bros.	Any day
		PRESBYTERIAN Newspaper Company, Limited	15th

Preddey W. S.	Last Thursday	Schwepes Limited	3rd Wednesday, after 2
Prescott H. and Co. ..	4th Thursday, after 2	Scott, Henderson and Co. ..	Saturdays, 10 to 12
Price and Co.	15th	Scott Mungo and Co. ..	Every Saturday, 10 to 12
Priddy and Co.	15th	Scott, Sibbald and Co., Ltd. ..	Last Friday
Produce Milling Co. ..	Last Thursday, 2 to 5	Scott T. R. and Co. ..	26th
Pulle G. and Co.	Last Thursday	Scottish Australian Investment Co., Limited	Any day
Pyke A. B.	After 15th	Scottish Australian Mining Co., Limited	Any day
		Scrutton R. L. and Co. ..	27th
Quong Tart and Co. ..	Any day	Seaham and Vale Collieries ..	Last week
		Seamer John H.	Last Friday
		Searl and Sons	Any day
		See John and Co.	Thursday, after 14th
		Segur Maurice	Last day, after 3
		Selig A. J. and Co.	15th
		Shadler Adolph	15th
		Shanahan A. G. and Co. ..	Any day
		Shaw Edmund E.	After 15th
		Shaw John, Ltd.	Last Friday
		Shelley Norman	Any day
		Shepherd P. L. O. and Son ..	Any day but Monday and Saturday, before 4
		Sheppard, Harvey and Walker ..	20th
		Shirley, George and Co. ..	Last Thursday afternoon
		Short George and Son	Any day
		Shorter John and Co. ..	25th
		Shortland and Sons	21st
		Shrimpton George	Thursday afternoon
		Siemens Bros. and Co., Ltd. ..	Any day
		Simmons Mick	Last Monday
		Simpson Bros.	Last Thursday
		Simpson William H. and Son ..	Saturdays
		Singer B. and Co.	Any day
		Singer Manufacturing Co., Sewing Machine	15th
		Simon Henry, Ltd.	Any day
		Simons R.	15th
		Sissons Bros. and Co., Ltd. ..	After 25th
		Small and Co.	1st
		Small J. W. and Co.	Any day
		Smith G. H. and Son	Any day
		Smith William Howard and Sons	Proprietary, Ltd.
		Smith T. L.	3rd Thursday, after 12
		Smith W. E.	25th, cheques posted
		Smith and Kopsen	Last Friday, 9 to 12
		Smith and Wade	15th
		Smyth and Nicolle	Any day
		Snaddon Andrew	Any day
		Soul W. H. and Co.	Any day
		Souter James	Any day
		Southern Coal Owners' Agency ..	Any day
		Southern Insurance Co. ..	Every Wednesday
		Spencer, Shrimpton and Co. ..	15th
		Spencer and Simpson	Any day
		Spicer James and Sons	Any day
		Staerker and Fischer	15th, 2 to 5
		Standard Brewery	3rd Friday, 10 to 12
		Standard Fire and Marine Insurance Co. of New Zealand ..	3rd Wednesday
		Standard Manufacturing Co. ..	Last Saturday
		Stanley H. A. and Co.	Last Friday
		Starkey John	Any day
		Starkey W.	Any day
		Steamship Owners' Association—Labour Office	Any day
		Stearns T. K., Limited	3rd Saturday
		Stedman James	Any day
		Steel and Co.	End of month
		Stewart and Co.	Last Thursday, 2 to 4
		Stewart A. and J. and Menzies, Limited	Last Friday, after 11
		Stewart, Dawson and Co. ..	1st
		Stewart, John and Co. ..	Last Thursday
		Stewart and McDonald	Any day
		Stewart, Porteous and Co. ..	Any day
		Stewart W.	Any day
		Stewart R. Morison	3rd Wednesday, after 2
		STONEKEEPER Publishing Co. ..	Last Saturday
		Storey David and Co.	15th
		Streathfield A. H.	Any day
		Street and Paterson	Every Wednesday
		Stuart-Turner Manufacturing Co.	Last day
Sada T. O. and Co. ..	Last Thursday		
Sandeman	4th Friday, before 12		
Sanders and Co.	Any day		
Sanderson John and Co. ..	3rd Tuesday		
Sands and McDougall, Limited ..	2nd Friday		
Sands John	20th		
Sandy James and Co. ..	Last Wednesday, after 3		
Sargood, Butler, Nichol and Ewen	15th, after 3		
Saunders A.	Last day		
Saunders Robert	Any day		
Saxton and Binns	Any day		
Sayers, Allport and Potter ..	Last Friday		
Saywell and Co.	27th, after 3		
Saywell Thomas	27th, after 2		
Scharff Justus	Any day		
Schuelders and Son	Any day		
Schultz C. and Co.	27th		
Schlütze, Steffens and Co. ..	20th		

Sulman and Power .. Any day
 Sun Insurance Office of London .. 3rd Wednesday
 SUNDAY TIMES (Newspaper) .. 4th Tuesday
 Surmann P. .. 15th
 Sutherland, Son and Co. .. Any day
 Sutherland W. and Co. .. 4th Saturday
 Sutton and Co. (carriers) .. After 20th
 Sutton and Co. .. Last Friday, 3 to 4
 Swan R. O. and Co. .. 3rd Thursday
 Swift and Co. .. 4th Friday
 Swinbourne and Stephen .. Any day
 Sydney Co-operative Clothing Co., Ltd. .. 3rd Wednesday
 Sydney Cycle Co. Ltd. .. 20th
 Sydney Exchange .. Any day
 Sydney Freehold Land, Building, and Investment Co., Limited .. Saturday
 Sydney Glass and File Co., Ltd. .. Last Friday
 Sydney Gristling Co. .. 4th Thursday
 Sydney Land Bank and Financial Agency Co., Limited .. Any day
 Sydney Lead Works, Ltd. .. Last Friday
 Sydney Lubricating Oil Co. .. Last Friday after 3
 Sydney Marine Underwriters and Salvage Association, Ltd. .. Any day
 SYDNEY MORNING HERALD .. Last Wednesday, 11 to 5
 Sydney Paper Mills Co. .. 1st Thursday after 20th
 Sydney Permanent Freehold Land and Building Co. .. Every Saturday
 Sydney Soap and Candle Co., Ltd. .. Last Friday, after 3
 Sydney and Suburban Bill Posting Co. .. After 25th
 Sydney and Suburban Hydraulic Power Co., Limited .. Last Friday afternoon
 Sydney Volcanic Aerated Water Co. .. Last Friday

Tait W. S. and Co. .. Last Monday, 3 to 5
 Talbot and Co. .. Every 3rd Wednesday
 Tange A. and Co. .. Any day
 Tange's, Limited .. Last Thursday
 Taylor Allen .. 2nd and 4th Friday
 Taylor Charles and Co. .. Last Thursday
 Taylor Enoch and Co. .. 3rd Friday, 3 to 5
 Taylor Samuel .. 25th
 Terneu George .. Any day
 Terrey and Son .. Last week
 Thompson A. and Co. .. Last Friday, afternoon
 Thomas Reuben W. .. 15th
 Thompson Robt. A. and Co. .. 15th
 Thomson, Gates and Co. .. 15th
 Thompson J. A. .. Last day
 Tickle J. B. and Son .. 15th
 Tillmans J. and Co. .. Any day
 Tillock and Co. .. 2 last Thursdays, 3.30 to 5
 Tollemache .. Every Wednesday
 Tobin E. J. and Co. .. Any day
 Toohy J. T. and J. .. 3rd Friday, 10 to 12
 Tooth and Co., Limited .. Any day
 TOWN AND COUNTRY JOURNAL .. 3rd Thursday, 3 to 5
 Towns R. and Co. .. Last Friday, 2 to 5
 Townsend S. D. and Co. .. Last day
 Train J. and Co. .. Last Friday
 Travers A. and Co. .. Any day
 Trayner W. and Co. .. Any day
 Trebeck, Son and Co. .. Friday, 10 to 3
 Triggs and Marr .. Last Wednesday
 Troup William .. 2nd Tuesday
 Trustees of the late Hon. Edward Flood .. Every Wednesday
 Tucker and Co. .. Last Tuesday and Friday, 11 to 1
 Tullock R. and Co. .. Last Friday
 TUNG WAH Newspaper Co., Ltd. .. 15th
 Turkish Baths Co. .. Every Friday
 Turner Brothers, Hyde and Co. .. Any day
 Turner and Henderson .. Last Friday, before 12
 Turner and Co. .. Any day
 Turner-Greville, Ltd. .. Last Thursday
 Tweed River Creamery Butter Co., Ltd. .. 20th
 Twopeny, Pearse and Co. .. Every Saturday
 Tylor J. and Sons, Limited .. Last Saturday

Union Clothing Factory .. Any day, 3 to 5
 Union Importing Co., Ltd. .. Last day
 Union Mortgage and Agency Co. of Australia, Limited .. Fridays
 Union Steamship Company of New Zealand .. Any day
 United Australian Exploration, Limited .. Any day
 United Fire and Marine Insurance Co., Limited .. Wednesday
 United Parcel Delivery Co., Ltd. .. Any day
 United Typewriters and Supplies Co. .. 15th and after, post cheques
 Universal Land and Deposit Bank .. Last Wednesday
 Vacuum Oil Co. .. Any day
 Vickery Joseph and Co. .. 21st
 Vial William and Son .. Any day
 Vickers J. and W. .. 15th
 Vickers Sons and Co. .. Last Friday
 Vickery E. and Sons .. 21st
 Victoria Insurance Co., Ltd. .. Wednesday
 Vintiner C. B. and Co. .. Mondays
 Virgoe, Son and Chapman .. Last Wednesday

Wade John and Co. .. After 15th
 Wahrtren Z. M. and Co. .. Last Friday
 Walder Samuel .. 30th
 Walker and Hall .. Any day
 Walker Arthur .. Last day
 Walker J. H. .. Last Wednesday, 2 to 4
 Walker James .. Any day
 Walker John and Sons, Ltd. .. 3rd Wednesday
 Walker W., Sons & Bartholomew, Limited .. 20th
 Wall and Molesworth .. Any day except Saturday
 Wallace and Co. .. 15th and 31st
 Waller F. A. and Co. .. Last Thursday
 Wallis and Sons .. Any day
 Waratah Coal Co. .. Any day
 Ward W. E. and Co. .. 15th
 Ward Marcus and Co., Ltd. .. Any day
 Ward James .. Any day
 Warren and Strang .. 15th
 Warrigal Club .. Last Friday
 Wasslamull, Assomull and Co. .. Every Wednesday
 Waterbury Watch Co. .. Any day
 Waterhouse G. J. .. Last Saturday
 Waters W. T. and Co. .. Any day
 Watkin and Watkin .. First Friday
 Watkins R. G. and Co. .. 25th, 2 to 6
 Watson and Crane .. 21st, cheques posted
 Waugh and Josephson .. Any day
 Waverley Brewery .. Last Thursday, after 3
 Way E. and Co. .. 15th
 Waygood Elevator Co., Ltd. .. Last Friday
 Webeudürfer Brothers .. 15th
 Weber, Lohmann and Co. .. Last Thursday
 Websdale, Shoosmith and Co. .. 21st
 Webster's, Limited .. 15th
 Weldemann and Co. .. Last Saturday
 Weekes John .. Last Friday
 Weingott and Sons .. 15th, after 3
 Wells George J. .. 1st Saturday
 Wenz and Co. .. Tuesday
 Wesleyan Book Depot .. 20th
 Westinghouse Brake Co., Limited .. 10th
 Westphal and Clark .. Last Saturday
 Wetherill John .. 15th
 Wharf Association .. Any day
 Whatham Brothers .. 15th, 3 to 5
 White A. J., Limited .. Any day
 White Weeks .. 2nd Tuesday
 Whitehead John .. Any day
 Wickham and Bullock Island Coal Co. .. Every Wednesday
 Wiesener T. F. .. End of month
 Wigzell C. E. .. Every Thursday morning
 Wilcox G. and Co. .. Every Thursday
 Wild William .. Last Friday
 Wildridge J. and Sinclair .. Any day
 Wilkins David .. 15th

Wilkinson, Cowan and Co. .. 15th and 31st
 Wilkinson and Lavender .. Wednesdays
 Wilkinson, Heywood and Clark, Ltd. .. Any day
 Wilkinson J. A. .. Any day
 Williams' (Dr.) Medicine Co. .. Last Friday
 Williams and Gibbons .. Tuesdays and Fridays
 Williamson, Croft and Co. .. 25th
 Willis T. and W. .. Third Wednesday
 Wilson, Corben and Co. .. Last Thursday
 Wilson Prosper J. .. 15th
 Wimble F. T. and Co. .. Any day
 Winchcombe, Carson and Co. .. Any day
 Wiseman Brothers .. 15th, 4 to 5
 Wood Reuben .. Any day
 Wolseley Sheep Shearing Machine Co., Limited .. Last Wednesday
 Wood and Co. .. Any day

Woodhill's Printing Works .. 29th
 Worthington Pumping Engine Co. .. Last Thursday
 Wright, Heaton and Co., Limited .. Every Friday
 Wright and Greig, Ltd. .. Last Thursday, after 2
 Wright J. P. and Co. .. Any day
 Wulffing Woolen Co. .. 15th
 Wunderlich Patent Ceiling and Roofing Co., Limited .. Last Thursday
 Wurcker Max .. Any day
 Wynt Brothers and Co. .. Any day
 Wyld H. J. .. Last Wednesday
 Yates A. and Co. .. Any day
 Young J. C. and Co. .. 15th
 Yull G. S. and Co., Limited .. Friday, 2 p.m.
 Zan Bros. .. Third Wednesday
 Zollner S. and Co. .. Last Saturday

Estimated Population of the Colony of New South Wales on 30th June, 1899.

	Males.	Females.	Total.	Males.	Females.	Total.
Births registered during the half-year ended 30th June, 1899	9,016	8,560	17,576			
Deaths during the same period	4,032	3,422	8,054			
Increase by excess of Births over Deaths	4,384	5,138	9,522
Arrivals by sea during the half-year ended 30th June, 1899	28,386	16,260	44,646			
Departures by sea during the same period (including allowances for unrecorded departures)	26,926	14,020	40,946			
Increase by excess of Arrivals by sea	1,460	2,240	3,700
Arrivals overland from Victoria, Queensland and South Australia, during the half-year ended 30th June, 1899	18,709	11,127	29,836			
Departures overland to those Colonies during the same period	19,988	12,260	32,248			
Decrease by excess of Departures overland				1,279	1,133	2,412
Total increase from 1st January to 30th June, 1899				4,565	6,245	10,810
Estimated Population on 31st December, 1898				721,385	624,905	1,346,290
Estimated Population on 30th June, 1899				726,900	631,150	1,357,050

NOTE.—The arrivals include 17 Chinese, of whom 14 were naturalised British subjects, and 1 paid poll-tax, while 2 were imprisoned in default of paying poll-tax; and the departures by sea include 220 Chinese.

Sands'

SYDNEY AND

SUBURBAN

DIRECTORY

FOR 1901

WILL BE PUBLISHED IN JANUARY NEXT.

The Compiler will feel obliged if the public will kindly note that corrections for the 1901 Edition should be forwarded not later than the first week in October, 1900. Communications connected with Directories to be addressed to "Compiler," Sands' Directories, 374 George Street, Sydney.

Advertising Rates, and all other information, will be afforded on written or personal application.

Orders for Copies, &c., may be booked any time during current year.

JOHN SANDS,

374 GEORGE STREET, SYDNEY.

Bank of New South Wales.

Established 1817.

Incorporated by Act of Council, 1830.

Paid-up Capital ...	£1,950,000.
Reserve Fund ...	£1,200,000.
Reserve Liability ...	£1,950,000.
Total ...	£5,100,000.

DIRECTORS:

JAMES THOMAS WALKER, Esq., *President*.
REGINALD JAMES BLACK, Esq.
WILLIAM ALFRED COTTEE, Esq.

RICHARD BINNIE Esq.
THE HON. CHARLES K. MACKELLAR, M.L.C.
ROBERT CAMPBELL CLOSE, Esq.

Auditors:

J. S. HARRISON, Esq. | F. W. UTHUR, Esq.
J. RUSSELL FRENCH, *General Manager*.

HEAD OFFICE, SYDNEY.

THOMAS HUNT IVEY, *Manager*.

London Office, Old Broad Street.

Directors:

SIR DANIEL COOPER, BART., *Chairman*.
ROBERT LUCAS TOOTH, Esq.

HENRY P. POWELL, Esq.
FREDERICK GREEN, Esq.

DAVID GEORGE, *Manager*.

London Bankers:

THE BANK OF ENGLAND.

THE LONDON JOINT STOCK BANK, LTD.

Melbourne Branch:

LOCAL DIRECTOR:
WILLIAM TAYLOR, Esq.

MANAGER AND CHIEF OFFICER FOR VICTORIA:
RODERICK MURCHISON.

BRANCHES IN NEW SOUTH WALES.

G. G. ALFORD, J. T. FORD AND W. J. EDWARDS, *Inspectors*:

Adelong	Coolamon	Haymarket (Syd.)	Newtown (Syd.)	Temora
Albury	Cooma	Henty	Orange	Tenterfield
Armidale	Coonamble	Inverell	Parramatta	Trangie
Ashfield (Syd.)	Coonamundra	Jerilderie	Penrith	Tumut
Balmain (Syd.)	Corowa	Junee	Pitt Street (Syd.)	Uralla
Bathurst	Cowra	Lismore	Port Macquarie	Urana
Bathurst-st. (Syd.)	Crookwell	Liverpool	Queanbeyan	Vegetable Creek
Bega	Deniliquin	Macleay	Richmond	Wagga Wagga
Bombala	Dubbo	Maitland	Rozelle (Syd.)	Walgett
Bourke	Dungog	Millthorpe	Ryde	Warialda
Braidwood	Forbes	Moama	Scone	Warren
Brewarrina	Glen Innes	Moree	Singleton	Waverley (Syd.)
Broken Hill	Goulburn	Moruya	Southern Branch.	Wellington
Bungendore	Grafton	Mudgee	Sydney	William St. (Syd.)
Burrowa	Grenfell	Narrandera	St. Leonards	Windsor
Burwood (Syd.)	Guilgong	Narrabri	Sussex St. (Syd.)	Wollongong
Camden	Gundagai	Newcastle	Tamworth	Wyalong, West
Campbelltown	Gunnedah	Newcastle, West	Taree	Yass
Casino	Hay			Young

BANK OF NEW SOUTH WALES—(Continued).

BRANCHES IN VICTORIA.

MELBOURNE: RODERICK MURCHISON, *Manager*.
HENRY NORMAN, *Inspector*.

Ararat	Creswick	Geelong	Rochester
Bairnsdale	Eaglehawk	Inglewood	St. Arnaud
Ballarat	E. Collingwood	Kyneton	Tallangatta
Beechworth	Echuca	Linton	Wangaratta
Benalla	Elmore	Maldon	Warragul
Bendigo	Fitzroy, Melb.	Mansfield	Warrnambool
Castlemaine	Flinders St. W., Mel.	Richmond, Melb.	Wodonga
Chiltern			

BRANCHES IN QUEENSLAND.

GILBERT KING, *Inspector*.

Brisbane	Charters Towers	Gympie	Roma
Aramac	Clermont	Hughenden	South Brisbane
Barcardine	Cooktown	Ipswich	St. George
Blackall	Croydon	Longreach	Toowoomba
Bowen	Fortitude Valley	Maryborough	Townsville
Bundaberg	Georgetown (Brisbane)	Normanton	Warwick
Cairns	Goondiwindi	Rockhampton	Winton

BRANCHES IN NEW ZEALAND.

E. J. FINCH, *Inspector*.

Wellington	Dunedin	Hokitiki	Oamaru
Alexandria (South)	Eltham	Invercargill	Pahiatua
Amberley	Fielding	Inglewood	Patea
Ashburton	Geraldine	Lawrence	St. Bathans
Auckland	Gisborne	Masterton	Thames
Blenheim	Gore	Napier	Timaru
Bulls	Greymouth	Naseby	Wanganui
Christchurch	Hastings	Nelson	Westport
Danvirke (Hawke's Bay)	Hawera	New Plymouth	

BRANCHES IN SOUTH AUSTRALIA.

Adelaide | Port Adelaide

BRANCHES IN WESTERN AUSTRALIA.

Perth | Fremantle | Coolgardie | Kalgoorlie | Boulder City

AGENCY WITHIN THE COLONIES.

TASMANIA.—THE COMMERCIAL BANK OF TASMANIA, LIMITED.

AGENCIES BEYOND THE COLONIES.

Scotland.—The Royal Bank of Scotland.
Bristol and West of England.—Stuckey's Banking Co.
Manchester.—Manchester and Liverpool District Bank, Ltd.
Liverpool.—North and South Wales Bank, Ltd.
Birmingham.—Lloyd's Bank, Ltd.
Huddersfield.—West Riding Union Banking Co., Ltd.
Ireland.—National Bank, Ltd.
Hamburg.—Messrs H. J. Merck & Co.
New York and Vancouver.—The Bank of British North America.
San Francisco.—The London and San Francisco Bank, Ltd.

India, China, Ceylon, and Singapore.—The Mercantile Bank of India, Ltd.; The Chartered Bank of India, Australia and China; The Hongkong & Shanghai Banking Corporation.
Batavia and Japan.—The Chartered Bank of India, Australia and China; The Hongkong and Shanghai Banking Corporation.
Manila.—Messrs. Ker & Co.
Valparaiso.—Banco de Chile.
Rio de Janeiro.—The London and Brazilian Bank, Ltd.
Buenos Ayres.—The British Bank of South America, Ltd.
South Africa.—The Standard Bank of South Africa, Ltd.

The Bank allows interest on Deposits, if lodged for fixed periods, at rates which may be ascertained at its various offices.

Collects for its customers dividends on shares in public companies and interest on debentures.

Invests Money on their behalf in Colonial Securities or those of Great Britain.

Issues Drafts, Circular Notes, and letters of credit, and negotiates approved bills, payable at any of the above named places, and undertakes the Agency of other banks on such terms as may be agreed upon.

The Circular Notes are issued in sums of £10 or £20, negotiable on the Continents of Europe and America or in India and the East.

The City Bank of Sydney,

Established 1863.

SUBSCRIBED CAPITAL, £500,000, IN 50,000 £10 SHARES.

Paid-up Capital	£400,000
Reserve Fund and Undivided Profits	109,342
Reserve Liability of Proprietors	540,000
Total Capital and Reserves	£1,049,342

HEAD OFFICE: PITT STREET, SYDNEY.

Directors:

JAMES EWAN, CHAIRMAN.

JOHN LYONS

HON. GEORGE THORNTON, M.L.C.

HON. ALBERT J. GOULD, M.L.C.

ALEXANDER DEAN.

Auditors:

T. B. FRITH

H. C. D'ARDIER.

General Manager:
JAMES HENDERSON.

Accountant:
JOHN J. CURTIS.

Secretary:

THOMAS T. ORTON.

City and Suburban Offices:—Eastern Branch: Oxford and Crown Streets. Western Branch: King and Sussex Streets. Town Hall: York and Drutt Streets. Haymarket, Auburn, Newtown.

Country Branches:—Armidale, Bathurst, Braidwood, Carcoar (with sub-branch at Mandurama, open on Tuesdays, Thursdays, and Saturdays only), Cootamundra, Goulburn, Hillgrove, Kiama, Newcastle, Nowra, Sofala, and Young.

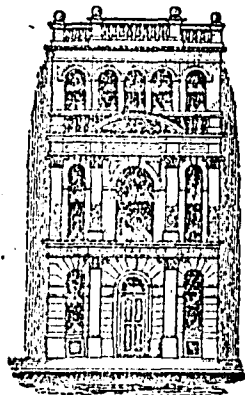
London Agents:—The London Joint Stock Bank, Limited.

Agents and Correspondents throughout the World.

Telephone 707.

ESTABLISHED 1880.

Box 27, Haymarket.



The Haymarket Permanent Land Building and Investment Company, Ltd.,

750 GEORGE ST., HAYMARKET.

Office open Monday Evenings 6 to 9.

DIRECTORS.

J. T. TILLOCK, Esq., J.P., CHAIRMAN.

WILLIAM HARRIS, Esq., J.P. | JOSEPH W. MORTLEY, Esq.
WILLIAM PRITCHARD, Esq., J.P. (St. Kilda).

To Borrowers.—Loans granted on liberal terms. Repayments weekly or monthly. Interest on half-yearly balance. Temporary loans (£50 and under) on deposit of deeds. No delay. Weekly or monthly repayments. Advances made on buildings in course of erection. Assistance to build on land purchased from Company. (Repayments commence after completion of building.)

Land for Sale on easy terms. Good building lots in City and Suburbs. Lithos on application.

Farms in the Furracabad Estate, New England, for sale or lease. Easy terms. Special Conditions.

Fixed Deposits Received (to a limited extent) for one, two, or three years. Rates on application.

Plans, prices, terms, and all information, on application.

ROBT. B. BARTON, Manager,

Sworn Valuator under the R. P. Act.

The Commercial Bank of Australia, Limited.

Registered Capital, £4,800,000. Paid-up, £3,113,724 15s. 4

DIRECTORS:

ROBERT HARPER, Esq., J.P., CHAIRMAN; ARCHIBALD CURRIE, Esq., J.P.; HON. W. H. EMBLING M.L.C.; HON. N. THORNLEY, M.L.C.

GENERAL MANAGER: HENRY GYLES TURNER, J.P.;

CHIEF INSPECTOR: H. L. HERON.

INSPECTORS: JOHN McNAIL, R. H. McNICOL, ARTHUR WALKER, AND ALBAN HILL.

AUDITORS: W. H. TUCKETT, Esq., J.P.; W. G. SPRIGG, Esq.

HEAD OFFICE: COLLINS STREET, MELBOURNE.

Manager: EDWARD SMITH, J.P. Assistant-Manager: ARTHUR WALKER, Accountant; E. C. O. HOWARD, LONDON OFFICE: 1 Bishopsgate Street, Within, corner of Leadenhall Street, E.C.

Directors: JOHN CONNELL, Esq.; A. J. MALCOLM, Esq.; ANDREW WILLIAMSON, Esq.

Manager: GEORGE NIVEN.

Accountant: G. W. WALLACE.

BANKERS: THE LONDON CITY AND MIDLAND BANK LIMITED, THREADNEEDLE STREET.

EDINBURGH AGENCY: 11 South Charlotte Street. Messrs. MITCHELL & BAXTER, W.S., Agents.

GLASGOW AGENCY: Messrs. SMITH & WILLIAMSON, Agents.

NEW SOUTH WALES:—SYDNEY: 273 George Street.

Assistant Manager: J. R. LEGOE. Accountant: L. DEUCHAR.

HAYMARKET (643 George Street)—Manager: JOHN HARRISON.

NEWCASTLE (Hunter Street)—Manager: G. T. BROOKE.

GOSFORD—Mann Street. (with Receiving Agency at Wyong)—Manager: WM. MINTYRE.

QUEENSLAND: BRISBANE, 180 Queen Street. Manager: A. H. HUDSON. Accountant: J. D. LEE.

SOUTH AUSTRALIA: ADELAIDE, 27 King William Street.

Manager: EDWARD JONES.

Accountant: G. A. MALLOCH.

BORDERTOWN—Manager: J. EDWIN LORD. MOUNT GAMBIER—Manager: HY. CHAMBERS.

PORT ADELAIDE—Manager: C. D. TASSIE. PORT DARWIN, N.T.—Manager: N. J. STEVENSON.

WESTERN AUSTRALIA:—Perth: St. George's Terrace.

Local Director: THE HON. SIR JAMES GEORGE LEE STEERE, Speaker of the Legislative Assembly.

Manager: W. H. J. THOMAS. Assistant-Manager & Accountant: H. E. WESTON.

SOUTHERN CROSS—Acting-Manager: C. S. BEVERIDGE.

FREMANTLE—Manager: F. W. CORNEY.

COOLGARDIE—Manager: ROBT. YOUNG.

KALGOORLIE—Manager: S. A. NEWSHAM. BOULDER—Manager: F. MARRIE.

BRANCHES AND AGENCIES IN VICTORIA:

Ballan—Manager, A. R. Stevens.

Ballarat—Manager, F. G. Haymes.

Bendigo—Manager, J. C. Johnston.

Berwick (with Receiving Agency at Pakenham)—

Manager, T. J. Colvin.

Beulah—Manager, J. G. Nolan.

Birchip—Manager, John Munro.

Brighton—Manager, George Leishman.

Bourke Street—Manager, Thomas Leach.

Brunswick (with Receiving Agency at Coburg)—Manager,

John M'Cormick.

Camberwell—Manager, Wm. Harding.

Carlton—Manager, J. H. Gatliff.

Charlton—Manager, C. R. Kelly.

Colac—Manager, C. M'Intosh.

Collingwood—Manager, John Bingle.

Dandenong (with Receiving Agency at Cranbourne)—

Manager, H. M. Sutherland.

Donald—Manager, A. Bryant.

Eaglehawk—Manager, James I. Adams.

Echuca—Manager, E. F. Lind.

Footscray—Manager, Wm. McKay.

Geelong—Manager, Andrew Norrie.

Gisborne—Manager, R. E. B. Franklin.

Hamilton—Manager, A. P. Mackenzie.

Hawthorn—Manager, Wm. Harding.

Haymarket—Manager, Jas. Everist.

Heathcote—Manager, R. J. Gates.

Heidelberg (with Receiving Agencies at Eltham and

Diamond Creek)—Manager, M. B. Finney.

Hopetoun—Manager, Geo. H. Buckley.

Horsham—Manager, Edward Davy.

Kaniva—Manager, Alex. Leith.

Kyabram—Manager, R. A. Holtam.

Lancefield—Manager, C. R. Olney.

Maffra (with Receiving Agency at Stratford)—Manager,

H. A. O'Brien.

Minyip—Manager, W. S. Rymer.

Mooroopna—Manager, W. R. G. Campbell.

Murchison—Manager, E. B. Irmuresej

Murtoa—Manager, M. Young.

Nagambie (with Receiving Agency at Avenel)—Manager

H. E. Hannah.

Nathalia—Manager, R. J. Lawrence.

Nhill—Manager, F. J. Sanders.

Numurkah—Manager, A. de Q. Robin.

Omeo—Manager, G. A. Hannah.

Orbost—Manager, H. G. Behan.

Pitfield—Manager, Jas. Dunbar.

Prahran—Manager, Chas. J. Williams.

Rokewood—Manager, James Dunbar.

Romsey—Acting-Manager, A. F. Cameron.

Rupanyup—Manager, A. S. Rusden.

Rushworth—Manager, A. F. Gell.

Sale—Manager, T. M. Rainer.

Sheep Hills—Manager, J. E. Davies.

Shepparton—Manager, William Gibbs.

South Melbourne—Manager, H. Burton Moore.

St. Kilda—Manager, W. A. T. Lind.

Tatura—Manager, A. O. H. B. O'Connor.

Warracknabeal—Manager, A. Collier.

Warragul (with Receiving Agency at Neerim South)—

Manager, G. H. Sims.

Warrnambool—Manager, Oliver Blayney.

Werrilee—Agent, G. W. Cooke.

Williamstown (with Receiving Agency at Newport)—

Manager, Robert Owen.

Woodend—Manager, H. C. Mackay.

Wycheproof (with Receiving Agency at Sea Lake)—

Manager, John Sinclair.

Yarrowong—Manager, John Elliott.

Yea—Manager, Edgar Rule.

THE Commercial Banking Company of Sydney. LIMITED.

Capital Paid-up	£1,000,000
Reserve Fund	1,010,000
Reserve Liability... ..	1,000,000
	<hr/> £3,010,000

DIRECTORS: SIR EDWARD KNOX (Chairman); G. J. COHEN, Esq. (Deputy Chairman);
HON. H. E. KATER, M.L.C.; HON. HENRY MOSES, M.L.C.; HON. R. JONES, M.L.C.
AUDITORS: HON. F. T. HUMPHREY, M.L.C.; and J. de V. LAMB, Esq.

General Manager: T. A. DIBBS.

Assistant Manager and Chief Inspector: T. B. GADEN.

Accountant: A. J. SOUTAR.

Branch Accountant: J. CLAYTON.

Solicitors: Messrs. CAPE, KENT, & GADEN and DIBBS, GIBSON, & PARKER.

HEAD OFFICE, SYDNEY—343 GEORGE STREET.

BRANCHES:

Chief Inspector: T. B. GADEN. Inspectors: W. C. D. TILLY, H. H. MASSIE, W. H. PINNEY.
BRANCHES IN SYDNEY—Exchange Branch, Pitt Street North; Pitt and Bathurst Streets; Eastern
Branch, Oxford Street; George Street West; King Street (Sydney); Newtown; Paddington; Redfern;
North Sydney; Southern Branch, Haymarket; Waterloo and Alexandria.

BRANCHES IN NEW SOUTH WALES:

Albury, Armidale, Ballina, Barraba, Bathurst, Bega, Bellingen, Berrigan, Berry, Bingara, Blayney, Bombala,
Bourke, Bowral, Braidwood, Brewarrina, Camden, Campbelltown, Candeelo, Canowindra, Carcoar, Casino,
Chatswood, Cobar, Condobolin, Cooma, Coonamble, Cootamundra, Coraki, Corowa, Cowra, Cudal, Delegate,
Dubbo, Dungog, Finley, Forbes, Germantown, Glen Innes, Goulburn, Grafton, Granville, Gundagai, Gunnedah,
Gunning, Hay, Inverell, Kempsey, Kiama, Lismore, Lithgow, Liverpool, Lockhart, Maclean, Maitland,
Manilla, Milton, Mittagong, Molong, Moree, Morpeth, Moruya, Moss Vale, Mudgee, Murrumburrah, Mur-
rumbidgee, Nyngan, Orange, Parkes, Parramatta, Paterson, Penrith, Picton, Port Macquarie, Queanbeyan, Quirindi,
Raymond Terrace, Richmond, Robertson, Shellharbour, Singleton, Tamworth, Taree, Tootumwal, Tumut,
Wagga Wagga, Walcha, Walgett, Wallerawang, Warialda, Warren, Wee Waa, Wellington, Wilcannia,
Windsor, Wingham, Wollongong, Yass, Young.

BRANCHES IN QUEENSLAND: Brisbane, Bundaberg, Charleville, Childers, Cunnamulla, Dalby, Emerald,
Fortitude Valley, Geraldton, Gladstone, Ingham, Longreach, Mackay, Maryborough, Rockhampton,
Thargomindah, Toowoomba, Townsville.

Branch in London: 18 Birchin Lane.

DIRECTORS: Sir J. A. Youl, K.C.M.G.; F. H. Dangar, Esq.; Benn W. Levy, Esq.; Hon. H. S. Littleton
MANAGER: Nathaniel Cork.

AGENTS:

ENGLAND—London: Bank of England; London and Westminster Bank, Ltd.; London and County Banking
Company, Ltd., Liverpool; Liverpool Union Bank, Ltd. Manchester: Williams Deacon and Manchester
and Salford Bank, Ltd.
IRELAND—Belfast Banking Company, Ltd., and Branches; National Bank, Ltd., and Branches.
SCOTLAND—Commercial Bank of Scotland, Ltd., and Branches.
VICTORIA—Bank of Victoria, Ltd., and Branches; National Bank of Australasia, Ltd.; Colonial Bank of
Australasia, Ltd.; Commercial Bank of Australia, Ltd.
WESTERN AUSTRALIA—National Bank of Australasia, Ltd., and Branches. Commercial Bank of Australia, Ltd.
SOUTH AUSTRALIA—National Bank of Australasia, Ltd., and Branches; Bank of Adelaide.
TASMANIA—Commercial Bank of Tasmania, Ltd., and Branches.
NEW ZEALAND—National Bank of New Zealand, Ltd., and Branches.
SAN FRANCISCO—Bank of British Columbia.
VALPARAISO—Banco de Chile.
NEW YORK—Messrs. J. P. Morgan & Co. Bank of Montreal.
INDIA, CHINA AND SINGAPORE—The Chartered Bank of India, Australia and China; The Mercantile Bank of
India, Ltd.
CEYLON—The Chartered Bank of India, Australia, and China.
BATAVIA—The Chartered Bank of India, Australia, and China.
MAURITIUS—Messrs. Scott & Co.
VANCOUVER—Bank of British Columbia.
HONOLULU—Messrs. Bishop & Co.
EGYPT—Credit Lyonnais.

And Agencies throughout the World.

Comptoir National d'Escompte de Paris (FRENCH BANK).

Capital Fully Paid-up - - -	Frs. 100,000,000 (£4,000,000).
Reserve Fund - - - - -	Frs. 9,040,459 (£361,618).

Chairman—M. DENORMANDIE, late Governor of the Banque de France.
General Manager—M. ALEXIS ROSTAND.

HEAD OFFICE: 14 RUE BERGÈRE.

Principal Branch Office (*Letter of Credit Department*), 2 Place de l'Opéra,
PARIS.

TWENTY-THREE OTHER BRANCHES IN VARIOUS PARTS OF PARIS AND SUBURBS.

Australian Agencies:

MELBOURNE: 51 Queen Street.
C. SHARD, Manager.

SYDNEY: 122 Pitt Street.
P. D'ORGEVAL.

AGENCIES IN FRANCE.

Abbeville	Béziers	Cognac	Hazebrouck	Montpellier	Rouen
Agen	Bordeaux	Condé-sur-Noi-	Issore	Nantes	Royat
Aix-en-Provence	Bourboule (la)	reau	Jarnac	Narbonne	Saint-Chamond
Alais	Caen	Dax	Lézignan	Nice	Sainte-Die
Amiens	Calais	Dieppe	Libourne	Nîmes	Sainte-Etienne
Angoulême	Cannes	Dijon	Limoges	Orange	Salon
Arles	Carcassonne	Dunkerque	Luxeuil	Périgueux	Toulouse
Avignon	Castres	Elbeuf	Lyon	Perpignan	Tourcoing
Bagnères-de-	Cavaillon	Epinal	Manosque	Pont l'Évêque	Trouville-Déauville
Luchon.	Cette	Firminy	Mans (le)	Remiremont	Vichy
Bagnols-sur-Cèze	Chagny	Ferté Macé (la)	Marseille	Rivesaltes	Villefranche-s.-Saône
Beaucaire	Chalon-sur-Saône	Fiers	Mazamet	Roanne	Villeeneuve-sur-lot
Beaune.	Chateaufort	Gray	Mont-de-Marsan	Roubaix	Vire
Bergerac	Clermont-Ferrand	Havre (le)	Mont-Dore (le)		

AGENCIES ABROAD,

ENGLAND: London—52 Threadneedle Street, E.C. Manchester—61 King Street.
Liverpool—Bank Chambers, Castle Street.

Australia—Melbourne, Sydney. U.S.A.—Chicago, New Orleans, San Francisco.

Madagascar—Majunga, Tamatave, Antananarivo. Tunis—Tunis, Sfax, Gabès.

Morocco—Tangier.

India—Bombay, Calcutta.

Correspondents in all Parts of the World.

LONDON BANKERS:

THE BANK OF ENGLAND. THE UNION BANK OF LONDON, LTD.
THE LONDON JOINT STOCK BANK, LTD.

THE COMPTOIR NATIONAL D'ESCOMPTE DE PARIS

Begs to draw the attention of Travellers to its

LETTER OF CREDIT DEPARTMENT IN PARIS

at the Branch Office, 2 Place de l'Opéra, in the very centre of the fashionable quarter of Paris, on the Boulevards
facing the Grand Opera, and within easy reach of the principal Hotels, Theatres and Shops.

The Branch Office is provided with Writing, Reading Rooms, Telephone, all necessary arrangements for receiving
and despatching correspondence, exchanging money, letting safes or parts thereof, wherein Travellers can deposit
valuables they do not wish to keep in the hotels; further, strong-rooms for the storage of heavy luggage, etc.

The AUSTRALIAN BRANCHES (Melbourne and Sydney) grant Drafts and Letters of Credit, and purchase
or collect Bills on all Foreign Places.

The Branches conduct Banking business of every description with the Continent, India, China, etc., upon terms
to be ascertained at the Office.

CIRCULAR LETTERS OF CREDIT.

The COMPTOIR NATIONAL D'ESCOMPTE DE PARIS issues Circular Letters of Credit payable all
over the World.

The English, Scottish and Australian Bank, LIMITED.

The SUBSCRIBED CAPITAL is £1,078,875
PAID-UP CAPITAL 539,437 10/-

Further Liability of Shareholders £539,437 10/-

The Perpetual Inscribed Stock of the Bank
amounts to about £3,000,000

CHIEF OFFICE: 38 LOMBARD STREET, LONDON, E.C.

Board of Directors:

CHAIRMAN—C. J. HEGAN, Esq. | THE HON. SYDNEY HOLLAND | JAMES JACKSON, Esq.
SIR WILLIAM A. HOGG | JAMES D. THOMSON, Esq. | JAMES TULLOCH, Esq.

SECRETARY—JOHN PATERSON.

BANKERS—THE BANK OF ENGLAND; THE LONDON & COUNTY BANKING CO., LIMITED.

BRANCHES:

Colonial Inspector and General Manager: ALEXANDER URQUHART.
Chief Inspector of Branches: C. W. WREN. Sub-Inspector: J. G. MANN.

NEW SOUTH WALES—SYDNEY.

FLETCHER DIXON, Manager; A. SHANKS, Accountant; N. F. CHRISTOE, Sub-Branch Inspector.
ALBION PARK—J. S. ARNOTT, Manager.
BALMAIN—WILLIAM DRUCE, Manager.
BERRY—A. J. COLLEY, Manager, with Agency at Kangaroo Valley.
BOWRAL—F. P. DOWDELL, Manager.
BULLI—C. DINNING, Manager, with Agency at Woonona.
BURRAWANG—A. K. D. YONGE, Manager.
CROOKWELL—F. E. DUDLEY, Manager.
GEORGE ST. WEST—GEO. McDONALD, Manager.
GOULBURN—C. E. MACKENZIE, Manager.
GRAFTON—E. McCAUSLAND, Manager.
KEMPSEY—F. A. MARAUN, Manager.
KIAMA—ALEX. NICHOLSON, Manager, with Agencies at Gerringong and Jamberoo.
LISMORE—F. K. RUTHERFORD, Manager, with Agency at Byron Bay.

LITHGOW—G. H. WATSON, Manager.
MILTON—W. J. A. BRYCE, Manager.
MOSS VALE—I. S. PONDER, Manager.
NEWTOWN—ERNEST SMITH, Manager.
NOWRA—E. C. HEWLETT, Manager.
PADDINGTON—D. B. FINLAYSON, Manager.
PITT STREET—E. J. MAPLESTONE, Manager.
PYRMONT—S. W. JAMES, Manager.
QUEEN'S WHARF—W. L. MOORE, Manager.
ROZELLE—M. J. WILSON, Manager.
ST. LEONARDS—H. W. HILLIER, Manager.
WAVERLEY—D. McDONALD, Manager.
WOLLONGONG—R. FINLAYSON, Manager, Agency at Dapto.
WOOLLOOMOOLOO—S. G. H. HEWLETT, Mgr.

VICTORIA—MELBOURNE.

S. G. P. DAVIES, Manager. H. J. LIMBERT, Accountant.
Ascot Vale—Ballarat—Box Hill, with Agencies at Doncaster and Surrey Hills—Brighton—Camberwell—Cheltenham with Agency at S. Brighton—Essendon—Fitzroy—Hawthorn—Hay-Market (City)—Kew—Malvern—North Carlton—North Melbourne—Oakleigh—Richmond (Bridge Road)—Richmond (Swan Street)—South Melbourne, with Agency at Albert Park—South Yarra—West Melbourne—Williamstown, with Agency at Williamstown North—Windsor.

SOUTH AUSTRALIA—ADELAIDE.

J. B. RIDINGS, Manager. R. J. HAWKES, Accountant.
Appila Yarrowie—Booleroo Centre—Brinkworth (Agency)—Clare—Eastern Market—Manoora (Agency)—Millicent—Mount Gambier—Petersburg—Port Darwin (N.T.)—Riverton—Saddletworth (Agency)—Snowtown—Tanunda—Tarlee (Agency)—Terowie (Agency)—Warrabara (Agency).

QUEENSLAND—BRISBANE.

P. A. MATTHEWS, Manager. J. J. CALDWELL, Accountant.

AGENTS:

Ireland—The Bank of Ireland and the Ulster Banking Co.
Scotland—The British Lloyds Company—National Bank of Scotland and North of Scotland Bank.

Plymouth—Harris, Bulteel and Co.
Liverpool—Parr's Banking Company and the Alliance Bank Limited.
Manchester—Williams, Deacon, and Manchester and Salford Bank (St. Ann-st branch).
Southampton—Capital & Counties Bank.

Birmingham—Lloyd's Bank Limited.
Tasmania—Union Bank of Australia Ltd.
New Zealand—National Bank of New Zealand Limited.
Western Australia—Union Bank of Australia.
San Francisco—London Paris and American Bank.

FOREIGN AGENTS:

Bank of British Columbia.
Messrs. Moos and Son—O. Melchior—Copenhagen.
The Mercantile Bank of India Limited.
Dresden—Dresdner Bank.

Chartered Bank of India Australia and China.
Hongkong and Shanghai Banking Corporation.
The Deutsche Bank—Berlin and Hamburg.

National Bank of India Limited.
Bank of British North America.
Dalbruck, Leo and Co—Berlin.

Letters of Credit and Drafts on the Branches and Agencies of the Bank in the Australian Colonies can be obtained at the Head Office or through the Agents of the Bank in the chief provincial towns throughout the United Kingdom.
Remittances made by telegraphic transfer.

Bills Negotiated, or forwarded for collection.
Banking and Exchange business of every description transacted with the Australian Colonies.
Deposits Received at interest for fixed periods on terms which may be ascertained on application.

The National Bank of Australasia LIMITED.

Incorporated under the Companies Act, 1890.

AUTHORISED CAPITAL £4,000,000
CAPITAL PAID UP... .. £1,671,999 18 5
PREFERENCE SHARES PAID UP 305,780 0 0
CAPITAL CALLED UP 4,283 1 7
RESERVE FUND ACCOUNT 50,000 0 0
RESERVE LIABILITY OF SHAREHOLDERS 718,407 0 0
2,750,470

Head Office COLLINS STREET, MELBOURNE.

Directors:

HON. SIR W. A. ZEAL, K.C.M.G., M.L.C., CHAIRMAN | HON. J. M. PRATT, M.L.C.
EDWARD TRENCHARD, Esq. | JOHN GRICE, Esq.
Chief Manager: FRANCIS GREY SMITH. Assistant Chief Manager: J. G. ADDISON.
Manager: G. V. SHILLINGLAW. | Accountant: W. G. SEWELL.
Inspector of Branches: T. A. EDMONDES.
Auditors: W. H. TUOKETT, Esq.; ANDREW BURNS, Esq. | Solicitors: MESSRS. MALLESON, ENGLAND & STEWART.

BRANCHES IN VICTORIA—

Alexandra	Buninyong	Euroa	Kyneton	North Melbourne	Smenton
Allendale	Casterton	Fitzroy (Smith-st., Collingwood)	(Taradale R.O.)	(Met. M.M.R.O.)	South Melbourne
Bacchus Marsh	Castlemaine	Footscray	Lancefield	Peushurst	Swan Hill
Bacchus Marsh (Melton Rec. O.)	Clifton Hill	Geelong	Leamonth	Port Melbourne	(Lake Boga Rec. O.)
Bairnsdale	Gobden	(Yarraville Rec. O.)	Maffra	Prahran	Swan-st., Richmond
Ballaarat	Cobram	Hamilton	Malvern	Pyramid Hill	Trentham
Benalla	Colac	Hawthorn	Mildura	Richmond	Victoria-st., East
Bendigo	Coleraine	Horsesham	Moonee Ponds	Romsey	Collingwood
Beulah	Creswick	Kerang	Natimuk	St. James	Violet Town
Birchip	Dimboola	(Jeparit Rec. O.)	Newstead	St. Kilda	Wangaratta
Boort	Doonbeg	Kew	Nhill	Sale	Warrnambool
Bridgewater	Doonbeg	Koroit	Northcote	Shepparton	Yarrowanga
Bright	(Cashel Rec. O.)	Korumburra	(Preston R.O.)		

BRANCHES IN SOUTH AUSTRALIA—

ADELAIDE—

Local Director: JOHN BAGOT, Esq., J.P.
Manager: J. G. JENNINGS.
Inspector of Branches: F. W. THOMAS.
Accountant: H. D. SUTHERLAND.
Solicitors: MESSRS. AYERS & GALL.

Angaston	Gladstone	Kapunda	Naracoorte	Port Augusta	Riverton
(Nuriootpa R.O.)	Hindmarsh	Koorlinga	North Adelaide	Port Curriem	Strathalbyn
Auburn	James Town	Moonta	Orroroo	Port Pirie	Wilmington
Clare	Kadina (Port)	Mount Barker	Penola	Quorn	Yongala
Eudunda	Wakefield Ag'cy.	Mount Gambier	Port Adelaide	Red Hill	
Gawler	Wallaroo Ag'cy)				

BRANCHES IN WESTERN AUSTRALIA—

PERTH—

Local Directors: A. R. WAYLEN, Esq., M.D.; THE HON. J. G. H. AMHERST, M.L.C.
Manager: H. R. ENGLAND. | Sub-Manager: A. McDONALD. | Accountant: A. W. BALLEHAUSEN.
Aibany | Coolgardie | Fremantle | Geraldton | Kalgoorlie | Leonora | Mount Malcolm | Mount Morgans | Northern

BRANCHES IN NEW SOUTH WALES—

SYDNEY—

Local Director: HON. Wm. McMILLAN.
Manager: GEORGE TURNBULL. | Accountant: H. A. SMITH.

BROKEN HILL.

London Office—123 BISHOPGATE STREET, WITHIN, E.C.

Manager: A. W. CUNNINGHAM. Secretary: J. D. BOOKER. Accountant: W. B. BROOK.
Bankers: THE BANK OF ENGLAND; THE LONDON JOINT STOCK BANK LTD.

AGENCIES.

Scotland—The National Bank of Scotland Limited. Ireland—The Provincial Bank of Ireland Limited—The National Bank Limited.
—The Ulster Bank Limited. New South Wales—The Commercial Banking Company of Sydney Limited—The City Bank of Sydney.
—The Australian Joint Stock Bank Limited. Queensland—The Queensland National Bank Limited—The Commercial Banking Company of Sydney Limited. Tasmania—The Commercial Bank of Tasmania Limited—New Zealand—The National Bank of New Zealand Limited—Bank of New Zealand. Fiji—Bank of New Zealand. Europe—Antwerp—The Banque Centrale Anversoise.
Berlin—The Dresdner Bank. Dresden—The Dresdner Bank. France—Credit Lyonnais. Rome—Plowden & Co. Vienna—Anglo-Austrian Bank. Copenhagen—Lloyds Bank. Landmansbank. Hypothek-og Vekselbank Aktieselskab. United States—The Bank of British Columbia. New York—J. P. Morgan & Co. Boston—Jacob C. Rogers. Philadelphia—Drexel & Co. Chicago—First National Bank of Chicago. India China, Japan &—The Mercantile Bank of India Limited—Agra Bank Limited—Chartered Bank of India Australia and China—Hongkong and Shanghai Banking Corporation. South Africa—The Standard Bank of South Africa Limited. Valparaiso—Ruth & Co. Rio de Janeiro—The British Bank of South America Limited.

The Queensland National Bank

LIMITED.

Incorporated under "The Companies Act, 1862."

BANKERS TO THE GOVERNMENT OF QUEENSLAND.

Subscribed Capital	- - -	£800,000 : 0 : 0
Paid-up Capital	- - -	£459,157 : 6 : 3
Less " " on Forfeited Shares	- - -	46,477 : 5 : 11
		412,680 : 0 : 4
Uncalled Capital	- - -	320,000 : 0 : 0
Less " " on Forfeited Shares	- - -	43,168 : 0 : 0
		276,832 : 0 : 0
Reserve Fund	- - -	9,000 : 0 : 0
Interminable Inscribed Deposit Stock	- - -	3,116,621 : 5 : 0

UNDER GOVERNMENT AUDIT.

All New Business since 1893 Protected under Clause 9 of Scheme of Arrangement.

DIRECTORS.

JAMES MUNRO, Esq., CHAIRMAN
A. J. CALLAN, Esq., M.L.A.

JOHN CAMERON, Esq.
JAMES MILNE, Esq., M.L.A.

Auditors: WM. BULCOCK, Esq., F.I.A.V.; GEO. S. HUTTON, Esq., F.F.I.A.
Solicitors: MESSRS. FLOWER & HART.

General Manager: WALTER VARDON RALSTON.

Chief Inspector: ALEXANDER STEUART.

Branch Inspectors: A. SPENCER, D. M. PATERSON, W. H. ROBERTSON.
Branch Accountant: LOUIS SMITH.

HEAD OFFICE, BRISBANE.

Manager: J. P. MACKENZIE.

BRANCHES:

LONDON OFFICE: 8 PRINCES STREET, E.C.

LOCAL DIRECTORS:

SIR EDWYN S. DAWES, K.C.M.G.; R. M. STEWART, Esq.; R. H. SPENS, Esq.;
MANAGER: J. W. DICKINSON. ACCOUNTANT: W. C. PHILLIPS.

BANKERS: THE BANK OF ENGLAND; LLOYDS BANK, LTD.

SYDNEY: 99 PITT STREET, —Manager WILLIAM SEWELL.

Albion Allora, Barmah, Beaudesert, Blackall, Boonah, Bundaberg, Burketown, Cairns, Charleville, Charters Towers, Clifton, Cloncurry, Cooktown, Croydon, Cunnamulla, Dalby, Esk, Fortitude Valley, Geraldton, Gympie, Halifax, Herberton, Hughenden, Ingham, Ipswich, Isisford (Agency), Laidley, Longreach, Mackay, Maryborough, Mount Morgan, Murrumbidgee (Agency), Normanton, Pittsworth, Port Douglas, Ravenswood, Richmond, Rockhampton, Roma, Sandgate, South Brisbane, Thargomindah, Thursday Island, Toowoomba, Townsville, Warwick, Winton.

AGENTS:

Victoria	- - -	The National Bank of Australasia, Limited
South Australia	- - -	The National Bank of Australasia, Limited
Western Australia	- - -	The National Bank of Australasia, Limited
New Zealand	- - -	Bank of New Zealand
Tasmania	- - -	The Bank of Australasia
Scotland	- - -	Royal Bank of Scotland; British Linen Co. Bank
Ireland	- - -	The Ulster Bank, Limited
New York	- - -	Messrs Laidlaw & Co.
San Francisco	- - -	Bank of California
China and the East	- - -	Hong Kong and Shanghai Banking Corporation Chartered Bank of India, Australia and China The Mercantile Bank of India, Limited

THE QUEENSLAND NATIONAL BANK, LIMITED, grants Drafts on its Branches and Agents negotiates Bills against Wool, Tallow, Hides, Copper, Tin, &c.; Purchases and Advances on Gold, Discounts Commercial Paper, makes advances on approved security, receives Deposits and allows Interest thereon according to arrangement, and transacts all other usual banking business.

CONRAD WM. SCHMIDT

(F. A. GLAESER),

Varnish & Japan Manufacturer.

Works:—STRATFORD, LONDON.

GLAESER'S LONDON ENAMELS.

Special Varnishes for Coachbuilders, Decorators, Boatbuilders, Japanners, Preservers, Tinsmiths, Printers, &c.

Australasian Representative: ERNEST E. TAYLER,

34 QUEEN STREET, MELBOURNE.

UNION BOX and

TELEPHONE 1807.

PACKING CASE CO.,

Rozelle Bay, Annandale,
SYDNEY,

are manufacturers of all kinds of BOXES
Butter Boxes a Speciality.

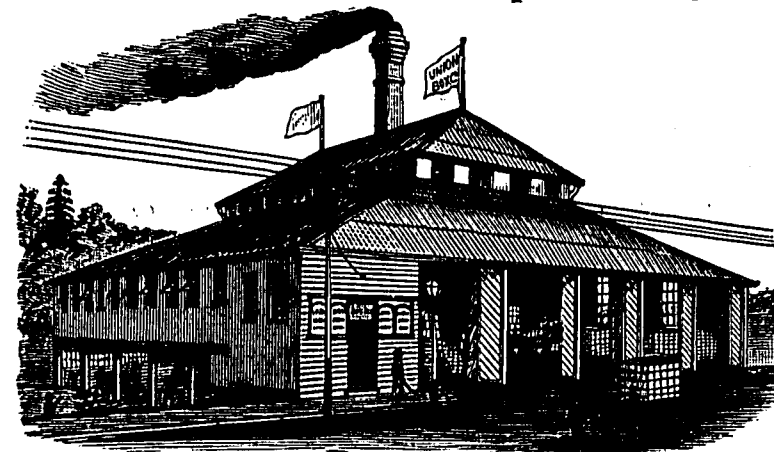
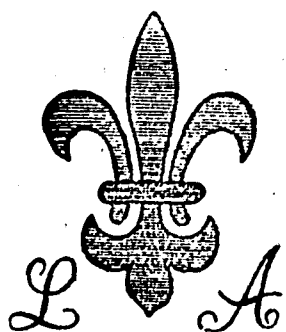


PHOTO OF PREMISES.

CORRESPONDENCE SOLICITED. Quotations given for large or small quantities.

ALBERT GUTHREY, Manager.



ALL COPYING PAPERS with the above Water-mark are guaranteed to be very absorbent, to possess great strength under wetting, and to give the clearest and most sharply-defined copies

May be obtained from any of the principal Stationers in the Colonies.

DINNEFORD'S



MAGNESIA.

THE UNIVERSAL REMEDY FOR

Acidity of the Stomach, Headache, Heartburn, Indigestion, Sour Eructations and Bilious Affections.

THE PHYSICIAN'S CURE

FOR

Gout, Rheumatic Gout and Gravel; the safest and most gentle Medicine for Infants, Children, Delicate Females, and the Sickness of Pregnancy.

SOLD THROUGHOUT THE WORLD.

N.B.—ASK FOR DINNEFORD'S MAGNESIA.

WM. WARNE & CO.,

INDIA-RUBBER MANUFACTURERS.

PATENTEES OF THE

Magnetic-cut India-Rubber Thread

IN COMPLETE WARPS.



Red Mineralised India-Rubber

For Valves, Washers, and Hose, for Tropical Climates, &c.



THE NEW PATENT SAFETY FILLING WATER BOTTLE.

NEW MOULDED SEAMLESS HOSE.

THE NEW MOULDED ENEMAS.

THE MARVELLOUS TOOTH BRUSH.



The "Hand Emollient," and "Sultan's Bath Brush."

TRADE MARK.



The "Prince of Wales," "Omnium Gatherum," "Mineralised Corrugated," "Sultan," "Premier," and "Crocodile" Tobacco Pouches.

ROYAL AROMATIC ELASTIC AND IMPERIAL BANDS.

MANUFACTURERS OF

EVERY DESCRIPTION OF INDIA-RUBBER.

Sheets, Valves, Washers, Buffers, Cord, India-Rubber and Canvas Packing.

DELIVERY AND SUCTION HOSE PIPES FOR FIRE ENGINES, STEAM PACKETS, &c

Gas Tubing, Lawn Tennis Balls, Enemas, Syringes, Catheters, Water Beds, &c.

THE ARMY AND NAVY REGULATION COATS AND CLOAKS.



Piece Goods, Cart and Waggon Covers, Air-proof Beds, Cushions, &c.

Solid India-Rubber Mats and Matting.



29 GRESHAM STREET, LONDON, E.C.

MILLS: TOTTENHAM, MIDDLESEX.

Glass Bottles

OF ALL KINDS
FOR
AERATED WATER MANUFACTURERS,
Wholesale Druggists, Chemists, Surgeons,
WINE & SPIRIT MERCHANTS,
Confectioners,
Oil, Pickle, and Sauce Manufacturers, and others.

Our Goods are now Well and Favourably known in the Colonies for their Superior Quality, and buyers are respectfully invited to enquire for our make, and accept no other.

KILNER BROTHERS,
No. 47 GREAT NORTHERN GOODS STATION,
KING'S CROSS, LONDON, ENGLAND.

Prize Medals at Seven Exhibitions.

Maker to H. M. Government Offices. Maker to the Bank of England.

WILLIAM MITCHELL'S STEEL PENS.



Manufactory:
WASHINGTON WORKS, CUMBERLAND STREET, BIRMINGHAM.

Warehouse:
44 CANNON STREET, LONDON E.C.

Medals Awarded 1851 and 1862.



CAUTION.

WILLIAM MITCHELL, having noticed that attempts are being made by manufacturers of less repute to copy his CELEBRATED SELECTED PENS, feels it necessary to CAUTION the Public against such imitations and to state that HE is the Original and Sole Manufacturer of the LONDON SELECTED PENS, distinguished by an embossed letter (in a series from A to W), which have acquired such Universal Pre-eminence. W. M. has every facility to meet the extensive demand of the public for his Celebrated Steel Pens, adapted for every character of writing, including his well-known J WILLIAM MITCHELL'S SELECTED, N WILLIAM MITCHELL'S SELECTED, and S FLAT-SPRING WILLIAM MITCHELL'S SELECTED.

N.B.—Purchasers are required to observe that none are GENUINE unless marked in full WILLIAM MITCHELL'S SELECTED, and on the lid of the Box an embossed label of the City of London Arms.

To be had of every Steel Pen Merchant and Stationer in the World.

Tin Plates Printed in Colors

For Show Cards, Advertisements,
Tins, Boxes, or Anything in which
Metal is used.

Enamelled, Lacquered,

Japanned, Spangled

and Embossed.

**PRINTING ON TIN
PLATES.**

374

George Street.

John Sands

(NEXT TO GENERAL POST OFFICE),

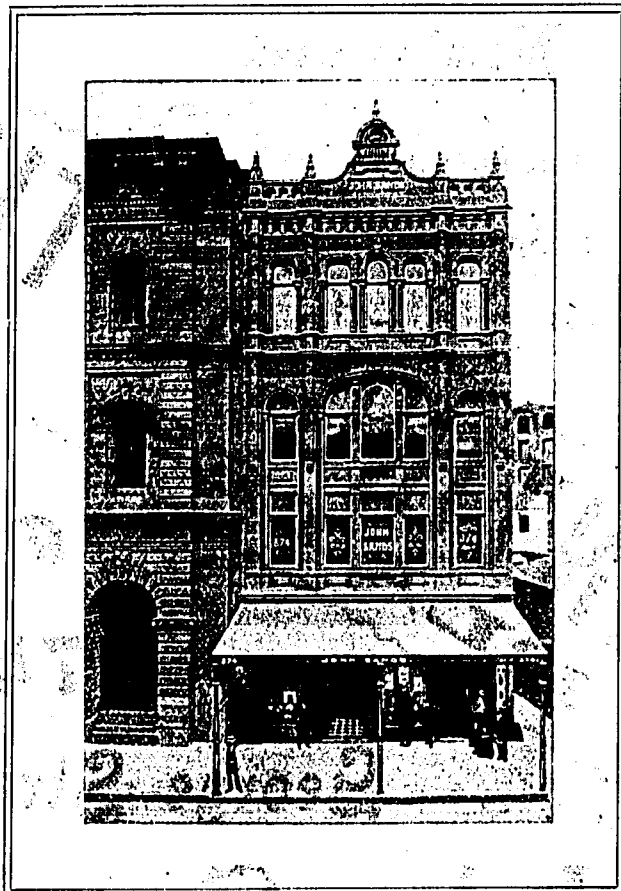
—SYDNEY.

DESIGNS & ESTIMATES SUPPLIED.

JOHN SANDS.

ESTABLISHED 1837.

STATIONER, PRINTER, BOOKBINDER,
LITHOGRAPHER, &c.



DEALER IN THE FINE ARTS.
All the Latest Importations.

374 GEORGE STREET,

SYDNEY.

(NEXT GENERAL POST OFFICE.)

TELEPHONE 1180



BY APPOINTMENT

Metropolitan Carriage Bazaar,

472 to 482 Harris Street.

Branch Yards—

17 CASTLEREACH ST. (near Art Gallery Hotel) Telephone 1721

718-20 HARRIS ST. (near George St) Telephone 1003

THOMAS STREET, HAYMARKET

THE OLDEST AND LARGEST
Livery and Carriage Hiding Business
IN NEW SOUTH WALES

(ESTABLISHED 25 YEARS)

Landaus, Broughams, Motor-in-England, Drages,
Waggonettes and Buggies of every description
for pleasure or business pursuits.

The Finest Selection of Wedding Carriages in
Australia. Capable Licensed Servants recruited
from the leading English families.

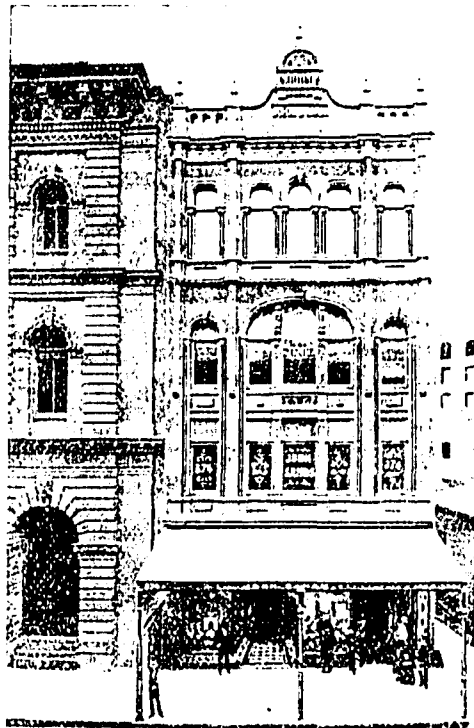
J. T. COFFILL,

SOLE PROPRIETOR

JOHN SANDS.

ESTABLISHED 1837.

STATIONER, PRINTER, BOOKBINDER,
LITHOGRAPHER &c.



DEALER IN THE FINE ARTS.
All the latest Importations.

374 GEORGE STREET,

SYDNEY.

(NEXT GENERAL POST OFFICE)

TELEPHONE 1160.



BY APPOINTMENT.

Metropolitan Carriage Bazaar, *472 to 482 Harris Street.*

Branch Yards—

37 CASTLEREAGH ST. (near Australia Hotel).—Telephone 1723.

718-20 HARRIS ST. (near George St.)—Telephone 3063.

THOMAS STREET, HAYMARKET.

THE OLDEST AND LARGEST Livery and Carriage Hiring Business IN NEW SOUTH WALES.

(ESTABLISHED 28 YEARS.)

Landaus, Broughams, Four-in-hand Drags,
Waggonettes and Buggies of every description
for pleasure or business pursuits.

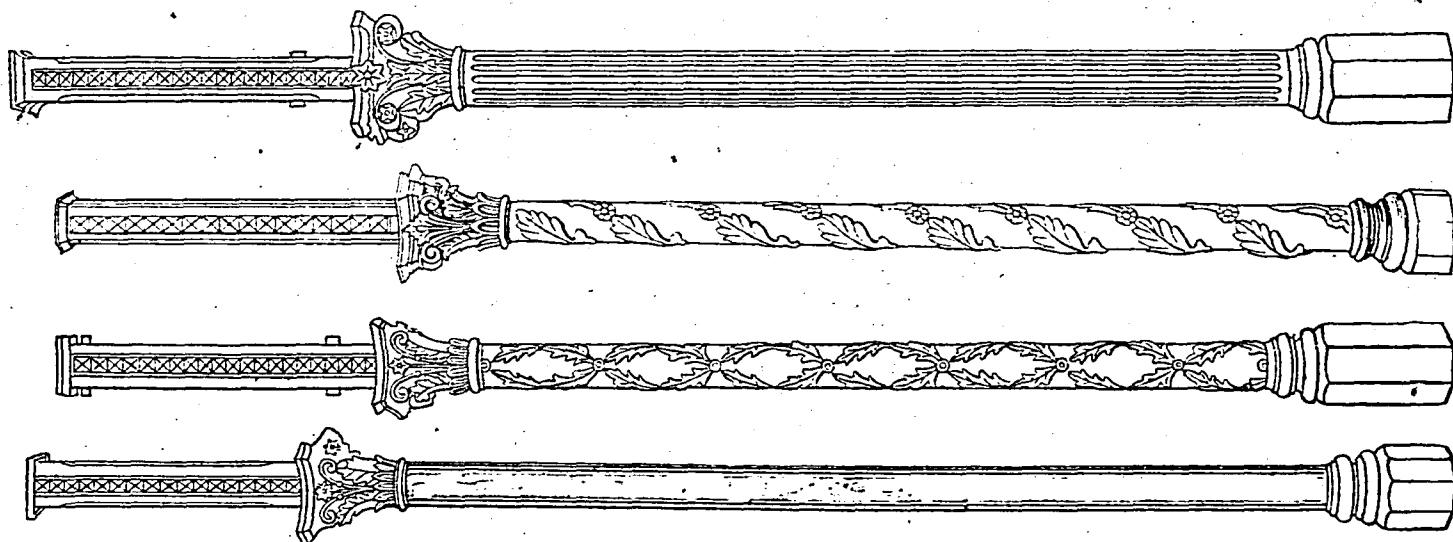
The Finest Selection of Wedding Carriages in
Australia. Capable Liveried Servants recruited
from the leading English families.

J. T. COFFILL,

SOLE PROPRIETOR.

NEXT TO ELECTRIC TRAMWAY POWER-HOUSE.

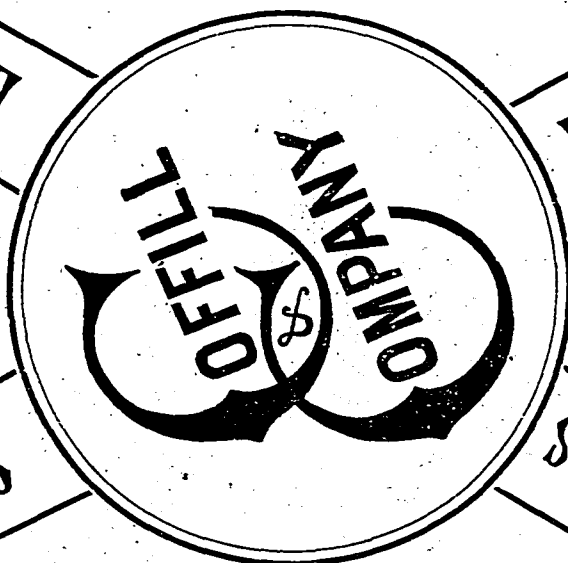
SYSTEM STREET, OF HARRIS STREET, ULTIMO,



No. 4. 8 ft. x 4 in.
No. 3. 8 ft. x 3½ in.
No. 2. 8 ft. x 4 in.
No. 1. 8 ft. x 3½ in.

J. J. BROWWICH,
IRON & BRASS FOUNDER,

EMBALMING OF FEMALE SUBJECTS
BY
Mrs. J. T. COFFILL, the First Certificated Lady Embalmer
practising in Sydney.



FUNERAL DIRECTORS

CARRIAGE PROPRIETORS



THE
LARGEST SELECTION
OF

Wreaths, Crosses,
and "In Memoriam" Cards
in Sydney.

INSPECTION INVITED.

The Originators of
REFORM FUNERAL CHARGES.

Pamphlet on "FUNERAL REFORM" free on application.

EMBALMERS

UNDERTAKERS

CENTRAL OFFICE—
Tel. 424.
812 George Street (Next Christ Church).
474, 718-20 Harris St. Tel. 1160 & 3063.
37 Castlereagh St., City. Tel. 1723.
666 Darling St. & 103
Weston Road, Balmain.
Tel. 70, Balmain. T. BARTLETT, Agent.
Boland's Corner,
Enmore.
McCOY & CO., Agents.
North Street.
S. ADCOCK, Agent.