

# AUSTRALIAN MUTUAL PROVIDENT SOCIETY.

Established 1849.

Established 1849.

For Life Assurance on the Mutual Principle, Annuities and Endowments for Children.



The Oldest Mutual Life Office in Australasia, and the largest in the British Empire.

## HEAD OFFICE: 87 PITT ST., SYDNEY.

### Directors:

THE HON. A. W. MEEKS, M.L.C., CHAIRMAN.

THE HON. JAS. T. WALKER, DEPUTY CHAIRMAN.

THE HON. JAS. BURNS, M.L.C.

THE HON. REGINALD J. BLACK, M.L.C.

THE HON. F. E. WINCHCOMBE, M.L.C.

ADRIAN KNOX, Esq., K.C.

SIR ALEXANDER MACCORMICK, M.D.

General Manager and Actuary... .. RICHARD TEECE, F.I.A., F.F.A., F.S.S.

Secretary... .. H. W. APPERLY

Assistant Actuary... .. CHAS. A. ELLIOTT, F.I.A.

Manager Industrial Department... .. ROBERT THODEY, F.I.A.

Chief Medical Officer... .. ROBERT SCOT-SKIRVING, M.B.

### NEW BUSINESS FOR THE YEAR 1913.

24,328 Policies Assuring £6,994,285, and producing a New Annual Premium Income of £224,559

### ACCUMULATED FUNDS:

**THIRTY-THREE MILLIONS STERLING.**

Annual Income: FOUR AND A HALF MILLIONS STERLING.

### ANNUAL DIVISIONS OF BONUS.

The Surplus for the year 1913, for division amongst the members, after holding unusually large reserves, amounted to over

**Nine Hundred and Eighty-Three Thousand Pounds Sterling.**

Yielding Reversionary Bonuses amounting to over

**ONE MILLION SEVEN HUNDRED and THIRTY THOUSAND POUNDS Sterling.**

This is a larger amount of Profit than has ever been Realized or Divided in one year by any other Life Office in the British Empire.

### IT IS THE LEADING AUSTRALASIAN LIFE OFFICE GIVING AN ANNUAL BONUS.

Claims are paid immediately on proof of death and title; the Premiums are moderate; the Policies are free from all harassing restrictions, and members may reside in or travel over any part of the world without permission or payment of extra premium.

### INDUSTRIAL DEPARTMENT.

Policies from £5 to £100 are now issued at weekly premiums, ranging from 3d. upwards, no Medical Examination being necessary.

# JAMES STEDMAN

LIMITED,

MANUFACTURING CONFECTIONERS

And Sole Proprietors of the

**FAMOUS LION BRAND CONFECTIONERY**

The Home of Pure and Wholesome Sweets.

— THERE IS NONE BETTER. —



ASK YOUR CONFECTIONER FOR OUR

#### Scouts' Toffee

A most Delicious and Nutritious Confection.

#### Creamy Toffee

A most Delicious Confection.

#### Imperial Butter Scotch

Packed in very novel and pretty Cartons.

#### Lanke Bill Toffee

Still the Children's Favourite.

Offices and Warehouse:—131 to 139 CLARENCE ST.

Factory:—264, 266, 268, 270, 272 KENT ST., SYDNEY.

# **JAMES STEDMAN Limited**

**Manufacturing Confectioners**

AND IMPORTERS OF

High-Class English, American and  
Continental Sweets.

**Our Famous Confectionery**

Cannot be excelled for Purity  
Exquisite and delicate Flavors.



Toothsome Dainties in Thousands of Different Varieties.

We invite you to visit our Sample Room, and we will convince you  
how we can give the Best Goods at the Lowest Cost.

Fresh Stock of Continental and American Novelties arriving by every Mail.

**Offices and Warehouse :**

**131 to 139 Clarence Street .. SYDNEY.**

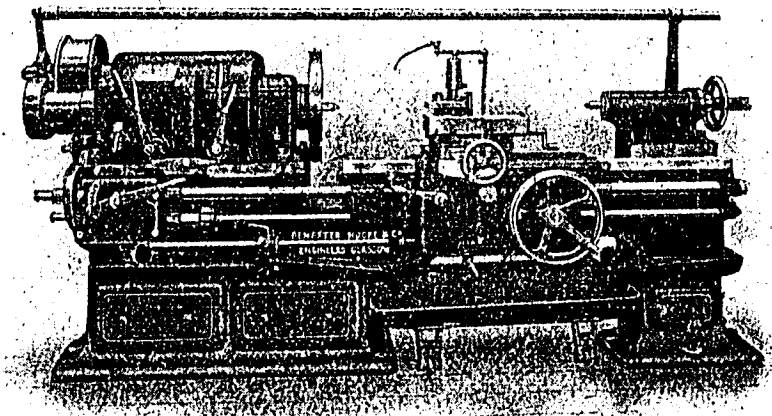
# **H. P. GREGORY & CO.**

—ENGINEERS and—  
**MACHINERY MERCHANTS**

**74 CLARENCE STREET, SYDNEY**

We represent the Manufacturers of the most modern Machine Tools on the  
World's market at the present day.

NEW SOUTH WALES AGENTS FOR PRATT & WHITNEY CO.



The above is an illustration of a Dempster, Moore and Co., Glasgow. 8in. S.S.S.  
and S.C. Lathe, Hollow Spindle, 8in. Centre, 8ft. 6in. Bed.

**We are Sole Agents, and carry these Lathes in stock.**

**We are also the SOLE AUSTRALIAN AGENTS for**

**KEARNEY & TRECKER CO.**

"Milwaukee" Universal Milling  
Machines

**AMERICAN TOOL WORKS CO.**

Lathes, Shapers and high-speed  
Radial Drilling Machines

**LUDLOW VALVE MFG. CO.**

Brass and Iron Body, Brass Mounted  
Valves

**MASON REGULATOR CO.**

Steam and Water Reducing Valves  
and Pump Pressure Regulators

**"AMERICAN" STEEL SPLIT PULLEY**

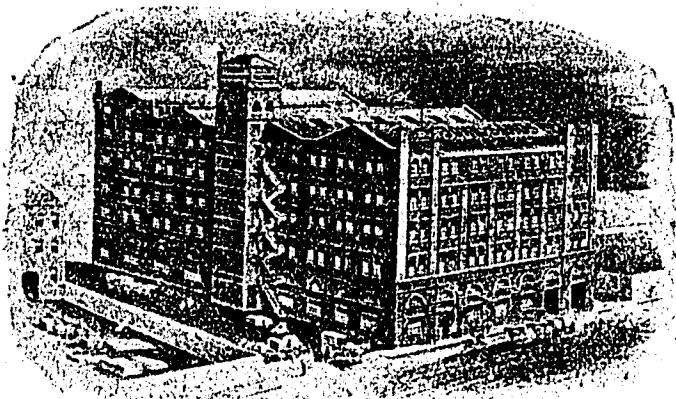
Stocks carried from 3 in. to 60 in.  
diameter

**SIMONDS' MFG. CO.**—Saws, Planer  
Knives

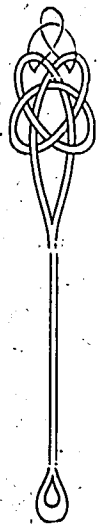
**"VICTOR" Balata Belting**

# John Sands Ltd.

374 George St. Factory: Druitt St.  
SYDNEY.



Lithographers,  
Engravers,  
Cardboard Box and  
Carton Manufacturers.  
Art Letterpress Printers.

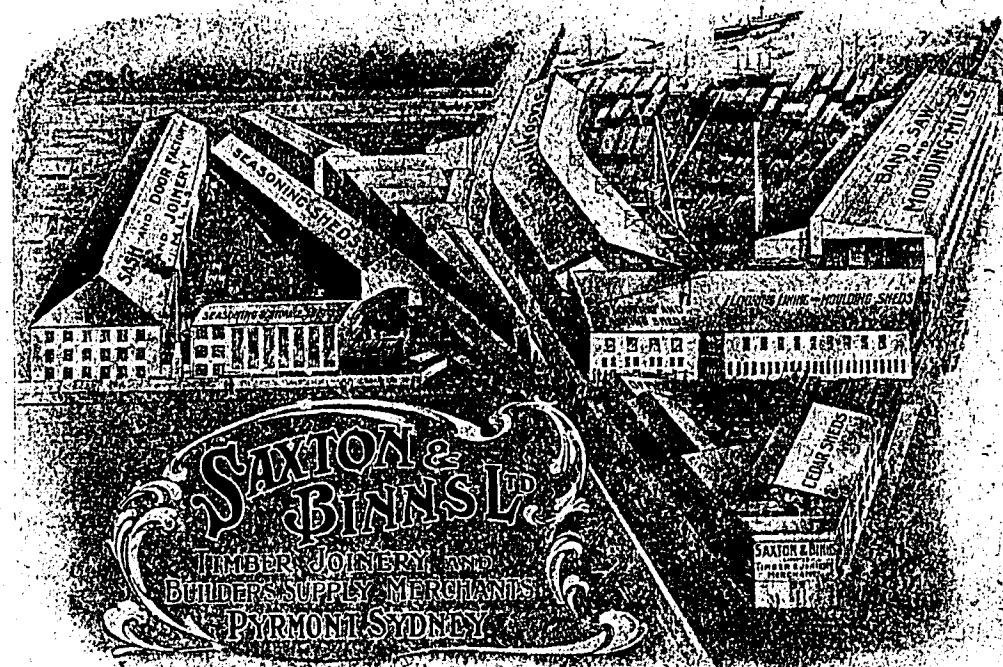


Manufacturers of  
Counter Check  
Books,  
Account Books.  
Tin Show Plate and  
Canister Printers.

TELEPHONES—Office City 9164 and 9165. Automatic M2515 and 2516;  
M1732 and 1738. M1501 (Joinery Department).

# SAXTON & BINNS

LIMITED,



**WEATHERBOARD COTTAGES**  
to any Size or Design.

A large number of stock  
plans to choose from.

See our Patent  
"SIMPLEX" PORTABLE BUILDINGS.

Complete Catalogue and Price  
Lists forwarded on application.

SUPPLIERS of

**TIMBER, Mouldings, Joinery,**

**Doors, Sashes, Mantels, Glass,**

**Turnery, Paints, Cement,**

**Galvanized Iron and Ironmongery**

# SAXTON & BINNS LTD.

Timber Joinery and Builders' Supply Merchants,

**Pyrmont, SYDNEY.**

# DALGETY & COMPANY LIMITED

**MACHINERY MERCHANTS  
MILLER'S POINT, SYDNEY**

## AGENCIES:—

### TANGYES

Lampless Oil Engines, the most popular for driving Shearing Machines, Pumps, Chaffcutters, Saws, etc. Benzine Engines, Suction Gas Plants, Steam Engines, Vertical Boilers, Hoisting Crabs, Chain Blocks, Lifting Jacks, Steam and Belt Driven Pumps.

### CLAYTON & SHUTTLEWORTH

Portable Steam Engines, Steam Traction Engines, Oil Tractors, Thrashing Machines, Steam Road Rollers.

### NICHOLSON & MORROW

Union Farm Machinery, Harvesters, Ploughs of all types, Harrows, Grain and Fertilizer Drills, Cultivators, etc.

### WOLSELEY

Sheep Shearing Machines (both friction and electric driven), Crutching Plants.

### MUNRO

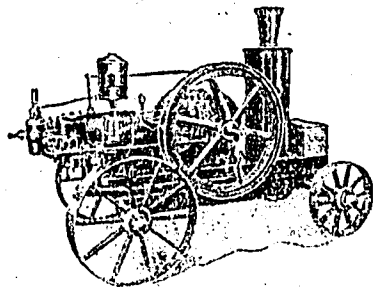
Chaffcutters, Bag Elevators, Corn-crushers, Saw Benches.

### GANE MILKING MACHINES

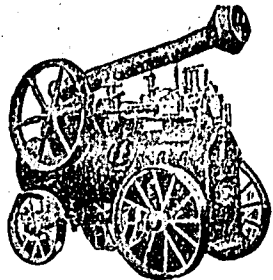
Used by the majority of dairy farmers on the North and South Coast districts of N.S.W.

Write us for Illustrated Lists of above.

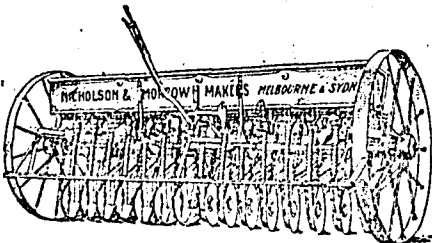
Telephones—City 9420 (7 lines).



Tangye Portable Lampless Oil Engine.



Clayton & Shuttleworth Portable Steam Engine.



Nicholson & Morrow Grain and Fertiliser Drill.



GANE Releaser Milking Plant, driven by Tangye Oil Engine.

# SANDS'

SYDNEY, SUBURBAN AND COUNTRY COMMERCIAL

# DIRECTORY

FOR

# 1915,

COMPRISING, AMONGST OTHER INFORMATION,

STREETS, SUBURBAN, ALPHABETICAL, TRADES AND PROFESSIONAL, COUNTRY TOWNS, COUNTRY ALPHABETICAL, PASTORAL, EDUCATIONAL, GOVERNMENTAL, PARLIAMENTARY, LAW, AND MISCELLANEOUS LISTS.

*Registered under the Copyright Act, 42 Vic. No. 20.*

FIFTY-FIFTH YEAR OF PUBLICATION.

PRICE, if ordered before Publication, TWENTY-FIVE SHILLINGS; after Publication, TWENTY-SEVEN SHILLINGS AND SIXPENCE.

Sydney:

JOHN SANDS LTD., 374 GEORGE STR. E.

1915

PRINTED BY ROBERT SANDS, OF KAMILANDI, CARRINGTON ROAD, WAVERLEY, NEAR SYDNEY, AT THE OFFICE OF JOHN SANDS LTD., GRUITT STREET, SYDNEY.

# DALGETY & COMPANY LIMITED

MACHINERY MERCHANTS

MILLER'S POINT, SYDNEY

## AGENCIES:-

### TANGYES

Lampless Oil Engines, the most popular for driving Shearing Machines, Pumps, Chaffcutters, Saws, etc. Benzine Engines, Suction Gas Plants, Steam Engines, Vertical Boilers, Hoisting Crabs, Chain Blocks, Lifting Jacks, Steam and Belt Driven Pumps.

### CLAYTON & SHUTTLEWORTH

Portable Steam Engines, Steam Traction Engines, Oil Tractors, Thrashing Machines, Steam Road Rollers.

### NICHOLSON & MORROW

Union Farm Machinery, Harvesters, Ploughs of all types, Harrows, Grain and Fertilizer Drills, Cultivators, etc.

### WOLSELEY

Sheep Shearing Machines (both friction and electric driven), Crutching Plants.

### MUNRO

Chaffcutters, Bag Elevators, Corn Crushers, Saw Benches.

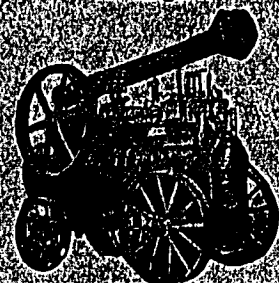
### GANE MILKING MACHINES

Used by the majority of dairy farmers on the North and South Coast districts of N.S.W.

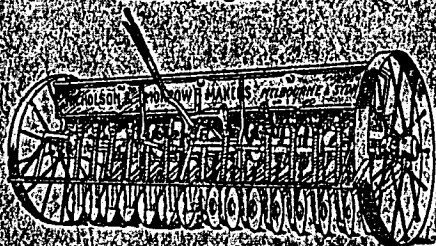
Write us for illustrated lists of above.  
Telephones—City 9420 (7 lines).



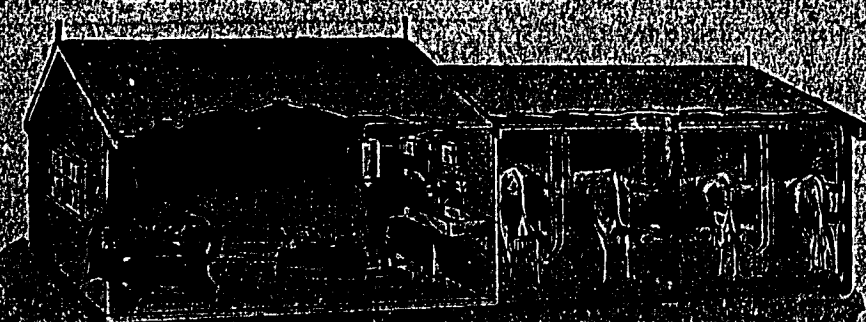
Tangee Portable Lampless Oil Engine.



Clayton & Shuttleworth Portable Steam Engine.



Nicholson & Morrow Grain and Fertilizer Drill.



GANE Releasing Milking Plant, driven by Tangee Oil Engine.

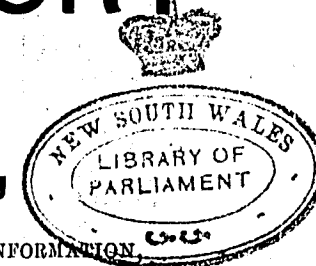
# SANDS'

SYDNEY, SUBURBAN AND COUNTRY COMMERCIAL

# DIRECTORY

FOR

1915,



COMPRISING, AMONGST OTHER INFORMATION,

STREETS, SUBURBAN, ALPHABETICAL, TRADES AND PROFESSIONAL, COUNTRY TOWNS, COUNTRY ALPHABETICAL, PASTORAL, EDUCATIONAL, GOVERNMENTAL, PARLIAMENTARY, LAW, AND MISCELLANEOUS LISTS.

*Registered under the Copyright Act, 42 Vic., No. 20.*

FIFTY-FIFTH YEAR OF PUBLICATION.

PRICE, if ordered before Publication, TWENTY-FIVE SHILLINGS; after Publication, TWENTY-SEVEN SHILLINGS AND SIXPENCE.

Sydney:

JOHN SANDS LTD., 374 GEORGE STREET.

1915

PRINTED BY ROBERT SANDS, OF KAMILARDI, GARRINGTON ROAD, WAVERLEY, NEAR SYDNEY, AT THE OFFICE OF JOHN SANDS LTD.

BRUITT STREET, SYDNEY.

CABLE ADDRESS—"ROZELLE"  
AT AND A.B.C. CODES

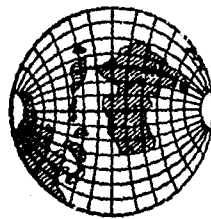
TELEPHONE—RED FERN 773



# New South Wales Canning Factory

**Meat Canners. Margarine Manufacturers.**

Preserved Meats Sheep and Ox Tongues  
Meat Extract Margarine

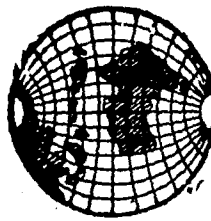


GLOBE BRAND

JAMES BARNES, PROPRIETOR

2 BOTANY STREET, WATERLOO

Prices and Terms on Application



GLOBE BRAND

## PREFACE.

### SANDS' DIRECTORY.

**J**OHN SANDS LTD. have again the pleasure of introducing their well-known **DIRECTORY** to the general public of Sydney and the State generally, and for their guidance would respectfully submit the following Key, in order to facilitate reference.

The **GENERAL INDEX** and **INDEX TO NAMES OF BUILDINGS, CHAMBERS, PARKS, TERRACES, ETC.** (pages v.-vi. & xli.-xliv.) is an alphabetically arranged list of every item in the book. Immediate reference to these will save much time and trouble.

The **CITY STREETS DIRECTORY** (pages 1 to 172) is arranged in alphabetical order of names of streets, showing where they commence, and the intersecting and terminal streets, together with the numbers of the houses in the main thoroughfares. This will be found very useful in tracing the exact locality of the more obscure and smaller houses.

The **SUBURBAN DIRECTORY** (pages 173 to 970) is compiled on the lines of the City streets, so far as possible. The respective Municipalities and Suburbs are shown in alphabetical order, with their boundaries, together with the rates, official lists, &c. corrected up to date.

The **ALPHABETICAL DIRECTORY** (pages 971 to 1881) contains the Institutions, also names of business, professional and private persons resident in Sydney and suburbs arranged in alphabetical order in the following sequence:—Where entries commence with the same surname, institutions and public bodies take precedence; next come the names of public companies, followed by partnership firms, then the names of individual business and professional people, and lastly private persons.

The **TRADES AND PROFESSIONAL DIRECTORY** (pages 1883 to 2208) contains lists of the trading and professional community only. Index of headings will be found at pages xlv. to xlviii. As much difficulty is experienced in gaining full and accurate information for this Section, it has been considered expedient to classify them according to the instructions given to the canvassers—a reference to similar trades being placed under each heading.

A **COUNTRY COMMERCIAL DIRECTORY**, alphabetically arranged in Town order will be found on pages 1A to 230A, and an Alphabetical List of the Country Trading Community falls on pages 1B to 171B.

A **PASTORAL SECTION**, giving the names of the principal Sheep and Stock holders, together with the names of Station, Post Town, Number of Horses, Cattle and Sheep on each Station, according to the respective Stock Districts, will be found in Section C. (pages 1C-196C), compiled from the Returns supplied to the Government by the Secretaries of the various Pastures Protection Boards, in the compilation of which the Publishers have to acknowledge with best thanks the great obligation they are under to the Minister for Lands, and the kindness and valuable assistance on the part of the Officers of the Stock Department.

**MUSICAL AND SPORTING CLUBS AND ASSOCIATIONS**, pages 2209 to 2212

An **ECCLIASTICAL LIST** is also included in the work. (See pages 2219 to 2222, For **EDUCATIONAL LIST**, see pages 2213 to 2218.

A list of the **JUSTICES OF THE PEACE** will be found on pages 2045 to 2058, compiled from official sources.

A list of leading **EUROPEAN MANUFACTURERS** will be found at page 2223.

The **MISCELLANEOUS DIRECTORY** (pages 2224 to 2260) includes Commonwealth and State Governmental and Parliamentary Lists, also Civil, Naval, and Military information, kindly revised to the latest date by Government and other officials, to whom the Publishers tender their best thanks.

A list of **FIRMS WITH FIXED PAY-DAYS** (pages 2253 to 2226) will be found useful in business circles.

**INTEREST CALCULATOR** will be found on page 2251.

Whilst thanking the subscribers and the public generally, the Publishers beg to say that the whole of the information has been **COLLECTED, COMPILED, AND PRINTED BY A STAFF RESIDENT IN, AND ACQUAINTED WITH, THE CITY AND SUBURBS**, whilst the Country information has been obtained from reliable sources; therefore this edition should be as complete and reliable as it is possible to render so voluminous a work.

**SPECIAL**.—Corrections for the 1916 Edition should be forwarded not later than the first week in October, 1915. Communications connected with **DIRECTORIES** to be addressed to "Compiler," **SANDS' DIRECTORIES**, 374 George street, Sydney.

374 GEORGE STREET, SYDNEY,

January, 1915.













































































































