

SANDS'

SYDNEY, SUBURBAN AND COUNTRY

DIRECTORY

FOR

1920



COMPRISING, AMONGST OTHER INFORMATION,

CITY STREETS, SUBURBAN, ALPHABETICAL, TRADES AND PROFESSIONAL
COUNTRY TOWNS (including FARMERS AND GRAZIERS), PASTORAL,
PUBLIC WATERING PLACES, EDUCATIONAL, GOVERNMENTAL,
PARLIAMENTARY, AND MISCELLANEOUS LISTS.

Registered under the Copyright Act, 42 Vic., No. 20.

SIXTIETH YEAR OF PUBLICATION.

PRICE, if ordered before Publication, **THIRTY SHILLINGS**; after Publication
FORTY-TWO SHILLINGS.

JOHN SANDS LTD., PRINTERS, SYDNEY.

1920

PRINTED BY ROBERT SANDS, OF KAMILAROI, CARRINGTON ROAD, WAVERLEY, NEAR SYDNEY, AT THE OFFICE OF JOHN SANDS LTD.
DRUITT STREET, SYDNEY.



CABLE ADDRESS—"ROZELLE"
A1 AND A B C CODES

TELEPHONES—
RED FERN 773 (2 LINES)
MASCOT 1

JAMES BARNES LIMITED

Manufacturers of

**Canned Meats, Margarine, Dripping,
Tallow, Meat Extract, Bone and Meat
Meal, Bonedust, Etc.**

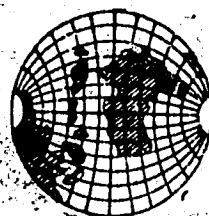
Linseed Oil and Oil Meal

Address

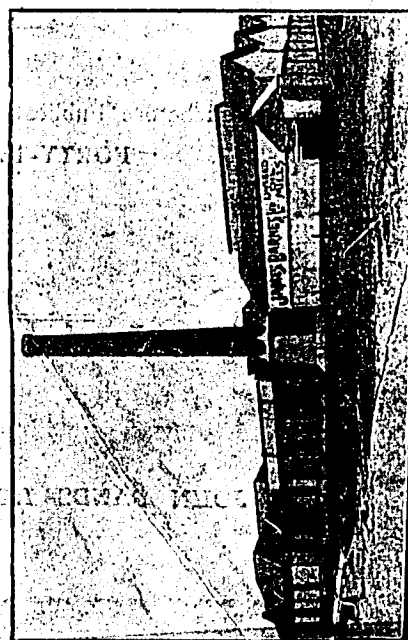
N.S.W. Canning Factory

2 BOTANY ST., WATERLOO.

Prices and Terms on Application



GLOBE BRAND



PREFACE.

SANDS' DIRECTORY.

JOHN SANDS LTD. have again the pleasure of introducing their well-known DIRECTORY, and would respectfully submit the following Key, in order to facilitate reference:

The GENERAL INDEX and INDEX TO NAMES OF BUILDINGS, CHAMBERS, PARKS, ETC. (pages v. to xlviii) is an alphabetically arranged list of every item in the book. Immediate reference to these will save much time and trouble.

The CITY STREETS DIRECTORY (pages 1 to 144) is arranged in alphabetical order of names of streets, showing where they commence, and the intersecting and terminal streets, together with the numbers of the houses in the main thoroughfares. This will be found very useful in tracing the exact locality of the more obscure and smaller houses.

The SUBURBAN DIRECTORY (pages 145 to 861) is compiled on the lines of the City streets, so far as possible. The respective Municipalities and Suburbs are shown in alphabetical order, with their boundaries, together with the rates, official lists, &c., corrected up to date.

The ALPHABETICAL DIRECTORY (pages 862 to 2004) contains the Institutions, business, professional and private persons resident in Sydney and suburbs, together with a list of the trading and professional community throughout the country, arranged in alphabetical order in the following sequence:—Where entries commence with the same surname, institutions and public bodies take precedence; next come the names of public companies, followed by partnership firms, then the names of individual business and professional people, and lastly private persons.

The TRADES AND PROFESSIONAL DIRECTORY (pages 2006 to 2314) contains lists of the trading and professional community only. Index of headings will be found at pages xlv. to xlviii. As much difficulty is experienced in gaining full and accurate information for this Section, it has been considered expedient to classify them according to the instructions given to the canvassers—a reference to similar trades being placed under each heading.

A COUNTRY COMMERCIAL DIRECTORY, alphabetically arranged in Towns order, will be found on pages 1A to 406A.

A PASTORAL SECTION, giving the names of the principal Sheep and Stock holders, together with the names of Station, Post Town, Number of Horses, Cattle and Sheep on each Station, according to the respective Stock Districts, will be found in Section C pages (10 to 175C), compiled from the Returns supplied to the Government by the Secretaries of the various Pastures Protection Boards, in the compilation of which the Publishers have to acknowledge with best thanks the great obligation they are under to the Minister for Lands, and the kindness and valuable assistance on the part of the Officers of the Stock Department.

In conjunction with the Pastoral Section, the Public Watering Places of N.S.W., including Bore (showing flow in gallons per day), Dams, Tanks, and Wells, with locality or shire in which situated, will be found on pages 176C to 179C.

MUSICAL AND SPORTING CLUBS AND ASSOCIATIONS, pages 2316 to 2319.

An ECCLESIASTICAL LIST is also included in the work. (See pages 2320 to 2323)

For EDUCATIONAL LIST, see pages 2324 to 2328.

A list of the JUSTICES OF THE PEACE will be found on pages 2165 to 2176, compiled from official sources.

The MISCELLANEOUS DIRECTORY (pages 2329 to 2356) includes Commonwealth and State Governmental and Parliamentary Lists, also Civil, Naval, and Military information, kindly revised to the latest date by Government and other officials, to whom the Publishers tender their best thanks.

A list of FIRMS WITH FIXED PAY-DAYS (pages 2357 to 2370) will be found useful in business circles.

INTEREST CALCULATOR will be found on page 2356.

The whole of the information has been COLLECTED, COMPILED, AND PRINTED BY A STAFF RESIDENT IN, AND ACQUAINTED WITH, THE CITY AND SUBURBS, whilst the Country information has been obtained from reliable sources; therefore this edition should be as complete and reliable as it is possible to render so voluminous a work.

SPECIAL.—Corrections for the 1921 Edition should be forwarded not later than the first week in October, 1920. Communications connected with DIRECTORIES to be addressed to "Compiler," SANDS' DIRECTORIES, 374 George street, Sydney.

374 GEORGE STREET, SYDNEY.

January, 1920.

